

TBJ Model WBF-HH Hand Held Water Bottle Filler (ref. dwg. 94025)

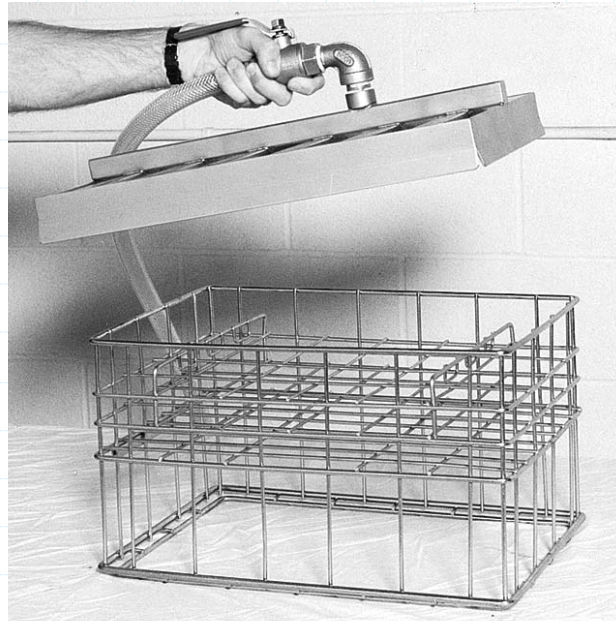
Application:

The Model WBF-HH is designed to provide a quick and easy method of filling racked animal water bottles. Its lightweight, portable design allows users to transport the filler from room to room if desired. The filler shall be equipped with 6 feet of sanitary tygon tubing and a quick-disconnect assembly. The filler manifold shall be manufactured from Type 304, 16 Gauge wall stainless-steel tubing. 1/8" stainless-steel half couplings shall be welded to the tubing to allow threaded stainless-steel nozzles to be screwed into the filler manifold. The filler shall utilize a 3/4" stainless-steel ball valve for turning the water supply on and off.

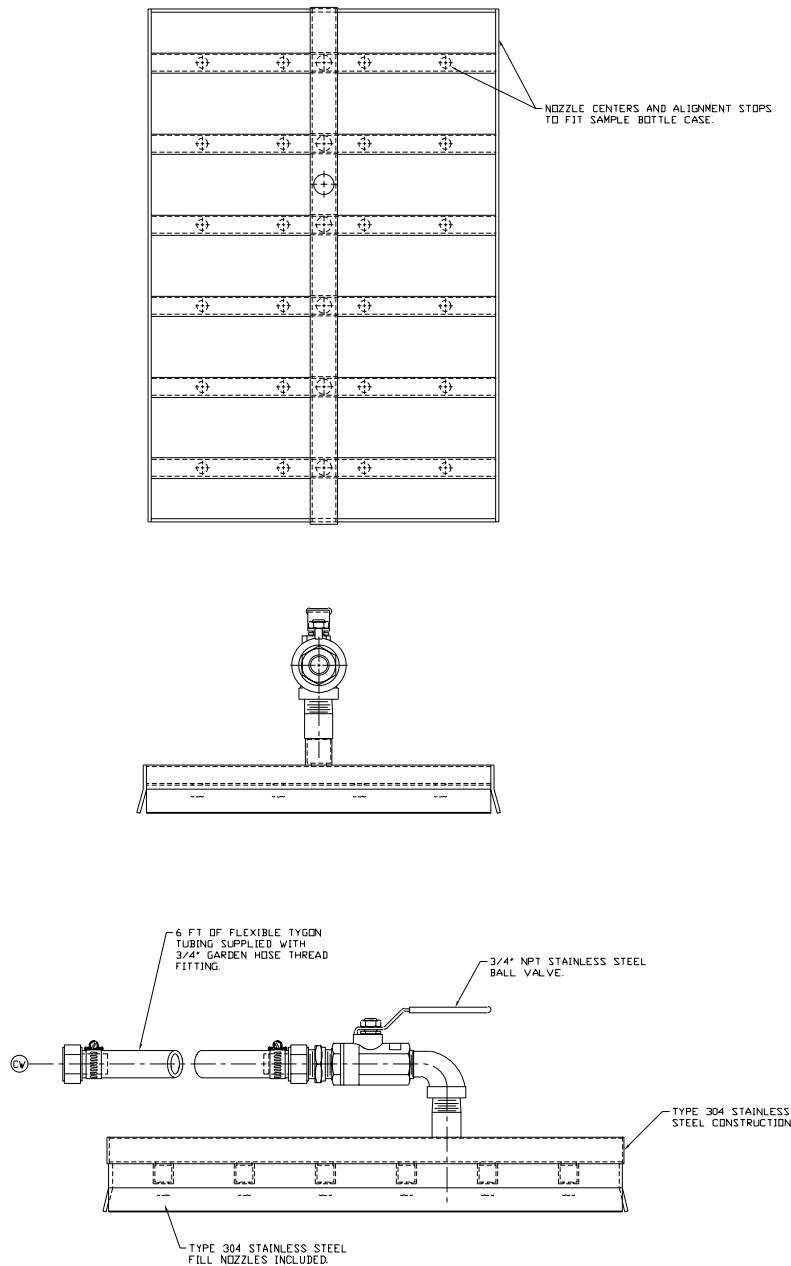
Operation:

In operation, the user simply places the filler over a rack of empty bottles and turns the valve on.

The filler manifold shall be customized to fit the users existing bottle cases.



**TBJ Model WBF-HH Hand
Held Water Bottle Filler
(ref. dwg. R94025)**



This print is the property of TBJ Incorporated. The information contained herein is confidential, it is not transferable. It is furnished with the clear understanding that it is not to be traced, reproduced or used in any process of manufacturing without written permission from the owner and is returnable upon request. Any infringement upon the patent rights shown herein, whether in whole or part, will be severely prosecuted.

Warranty:

This equipment shall be free from defects and workmanship for a period of one year from the date of installation.

Specification and drawing are subject to change without notice unless certified by factory.

Utility Requirements

CW --- Cold Water - 3/4" I.P.S., 40-60 PSI

D --- Drain - 1-1/2" I.P.S. Floor Drain

TBJ
INCORPORATED

1671 Orchard Drive
Chambersburg, PA 17201
Phone: (717) 261-9700
Fax: (717) 261-1730