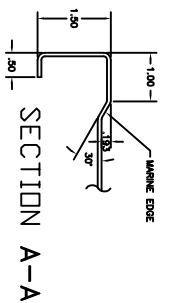
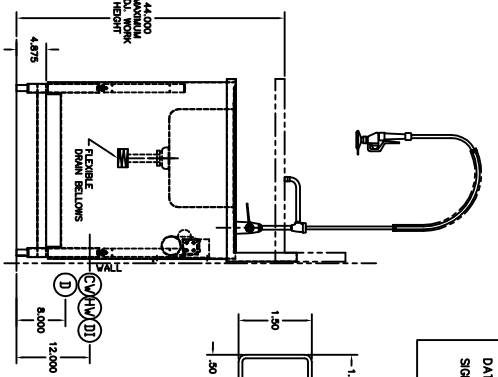
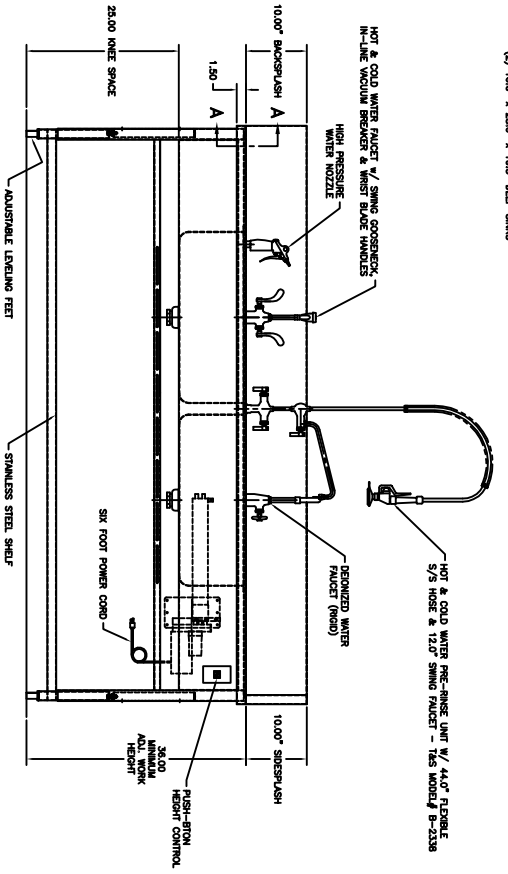


- UTILITY REQUIREMENTS
- (NW) COLD WATER - 3/4" I.P.S. (FLEX LINE BY OTHERS)
 - (HW) HOT WATER - 1/2" I.P.S. (FLEX LINE BY OTHERS)
 - (D) DRAIN - 1-1/2" I.P.S.
 - (E) ELECTRICAL - 115 V., 1 PH., 60 Hz., 15 AMP
 - (DI) DEIONIZED WATER - 3/8" or 1/4" NPT (FLEX LINE BY OTHERS)

APPROVED _____

PRINT NAME:
DATE:
SIGNATURE:



NOTES: 1) MAX. OVERALL DIMENSIONS MUST BE CONSIDERED FOR BUILDING ENTRY.

REV	DATE	BY	REVISION

1871 BIRCHWOOD DRIVE
CHAMBERSBURG, PA 17201
PHONE (717) 826-0700 FAX (717) 826-0600
WWW.WORKSINKS.COM
DATE 5-22-11
MODEL 30-95 MS-AH WORK SINK
ROUGH-IN ASSY R11167