

TBJ Model BSS-1DD Single Station Downdraft Bedding Scrapping Station (ref. dwg. R93009)

The TBJ Model BSS-1DD provides a means of collecting the waste from small animal cages and trays in a container for removal and disposal.

The unit is designed to capture dust from the area around the scrapping grid. Capture ability will be dependent on volume and static pressure of the exhaust system* supporting the station.

Designed within the station shall be air flow baffles to cause air flow to occur around the entire perimeter of the scrapping grid area.

The station shall be 30" wide, 30" deep, and 42" high. Scrapping grid area shall be 18" wide and 18" deep. Clearance from the floor to the scrapping chutes under the station shall be 34" to allow easy movement of disposal containers into place. Adjustable guide shall be supplied under station to align the disposal containers with the scrapping chutes.

A damper shall be built into the table to allow air flow rates to be fully controlled.

A filter shall be provided in the exhaust duct and shall be easily removable by operator.

The exhaust from the station shall be drawn from around the entire perimeter of the scrapping grids.

*The negative air pressure exhaust system shall be supplied and installed by others.

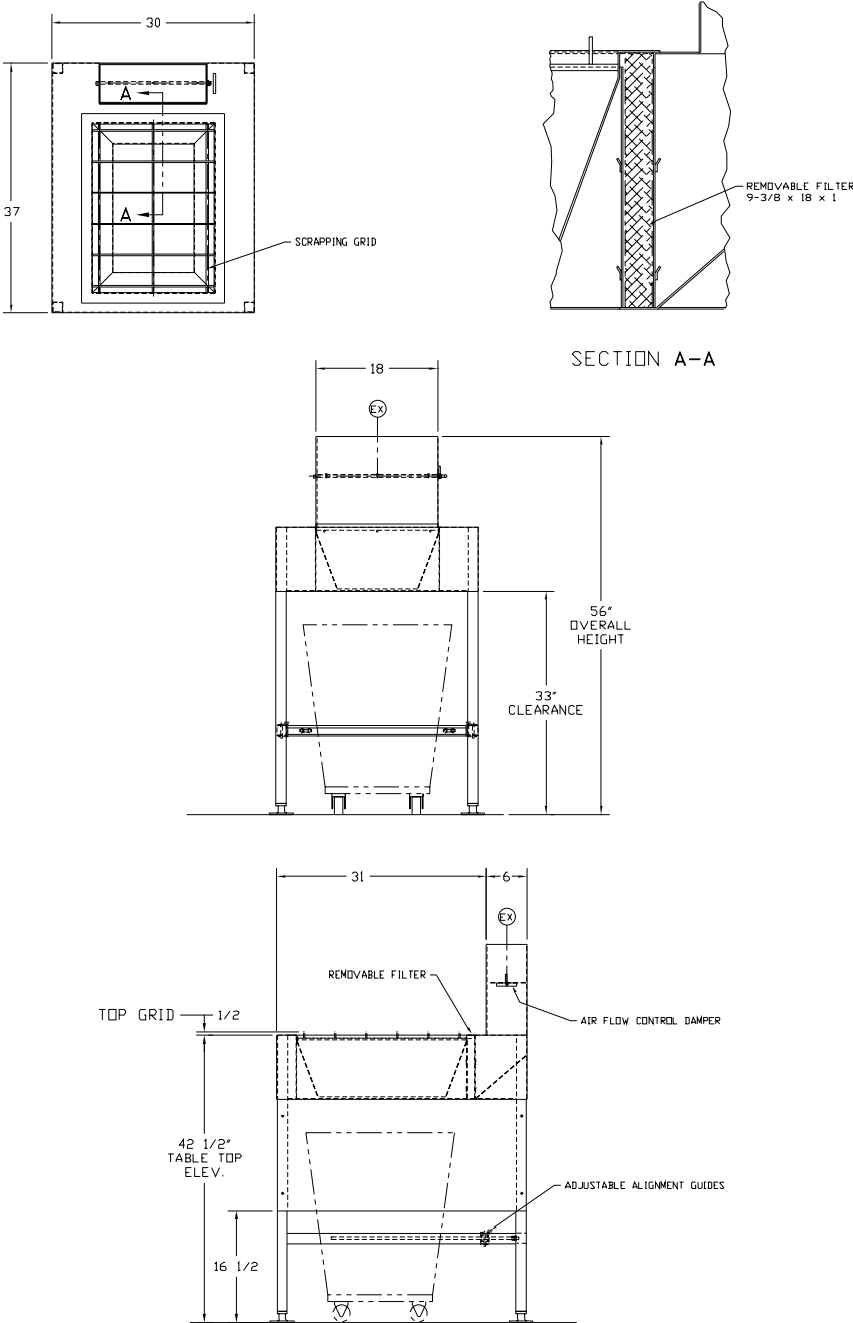
Construction:

The Model BSS-1DD Down Draft Type Bedding Scrapping Station shall be all T304 stainless-steel construction. All welding shall be heliarc, with all exposed welds ground and finished to match surrounding areas.

- A. Station Supports - 16 GA stainless-steel tubing
- B. Station Body - 16 GA stainless steel
- C. Scrapping Grids - 1/4" x 1" stainless-steel bar
- D. Damper - 16 GA stainless-steel and round bar

NOTE: Disposal container(s) by others

**TBJ Model BSS-1DD Single Station
Downdraft Bedding Scrapping Station
(ref. dwg. R93009)**



This print is the property of TBJ Incorporated. The information contained herein is confidential, it is not transferable. It is furnished with the clear understanding that it is not to be traced, reproduced or used in any process of manufacturing without written permission from the owner and is returnable upon request. Any infringement upon the patent rights shown herein, whether in whole or part, will be severely prosecuted.

Warranty

All components are warranted to be free from defects in material and workmanship for a period of one (1) year, when used in accordance with manufacturer's instructions.

Specification and drawing are subject to change without notice unless certified by factory.

Utility Requirements

EX --- Exhaust - 6" x 18" 400 CFM



1671 Orchard Drive
Chambersburg, PA 17201
Phone: (717) 261-9700
Fax: (717) 261-1730