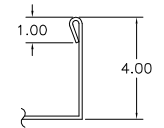
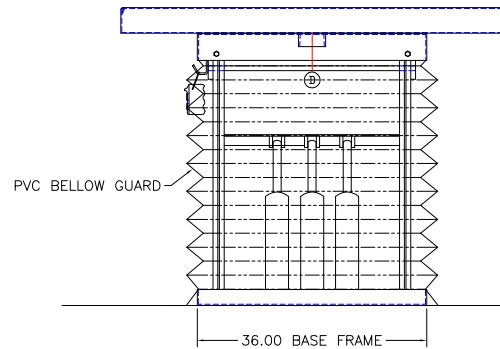
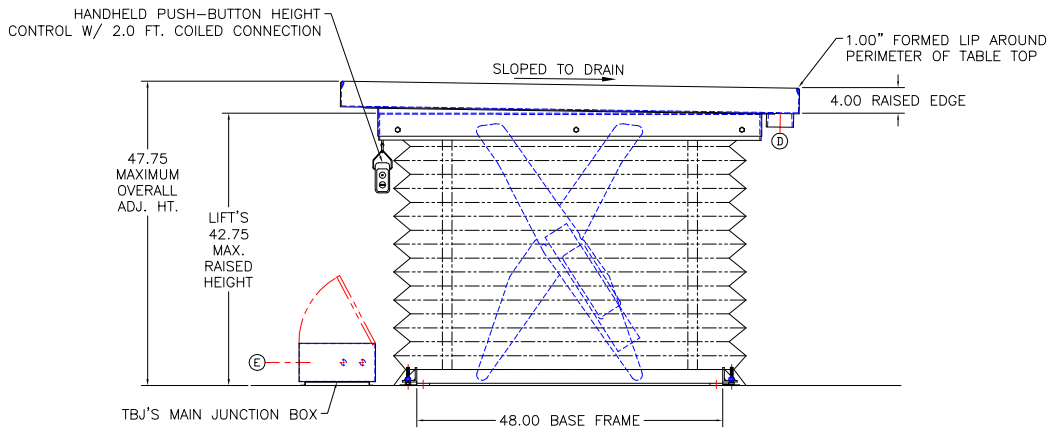


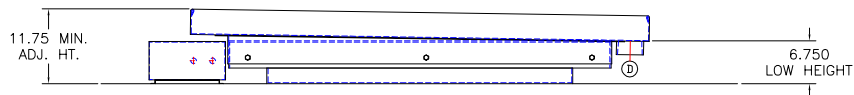
LIFT SPECIFICATIONS

MODEL:-----LS6-36
 WEIGHT CAPACITY-----6000 LBS uniform load
 PLATFORM-----36.0" Wide x 60.0" Long of 1/4" plate
 BASE FRAME-----36.0" Wide x 48.0" Long w/ lag angles
 LOWERED HEIGHT-----11.75" w/ down stops
 VERTICAL TRAVEL-----36.0" @ 66 seconds
 ELEVATED HEIGHT-----47-3/4"
 MOTOR POWER-----115 V, 1 PH, 60 Hz., 1 Hp TENV.
 HYDRAULIC FEATURE-----min down drifting valve
 CONTROLS:-----24 V, 1 PH, 50 Hz
 UP/DOWN hand held pushbutton control in
 NEMA 4 enclosure on 2 ft. coil cord.
 TABLE SURFACE-----11 GA. T304 Stainless Steel w/ #4 Finish
 BELLOWS GUARD-----PVC Guard
 DRAIN CONNECTION-----3.0" NPT

APPROVED
 PRINT NAME:
 DATE:
 SIGNATURE:



SECTION A-A
SCALE: 6"=1'-0"



		TBIJ INC.		1671 ORCHARD DRIVE CHAMBERSBURG, PA 17201	
		SCALE 1/2"=1'-0"		DRAWN BY ALE	
		REF DWG - 80103		DATE 3-21-11	
		6000# LIFT-TYPE TABLE			
LET.	REVISION	BY	DATE	ROUGH-IN	R11056