

### BASE SPECIFICATIONS

CAPACITY:-----2000 lbs uniform load  
 LOW HEIGHT:-----15.25" approx.  
 VERTICAL TRAVEL:-----36.0"  
 RAISED HEIGHT:-----51.50"  
 BASE FRAME SIZE:-----24" wide x 48" long  
 PLATFORM SIZE:-----36" wide x 72" long of 1/4" plate  
 BELLOWS GUARD:-----Neoprene coated PVC  
 ACTUATION:----- (2) - 3.5" bore Southworth single acting cylinder

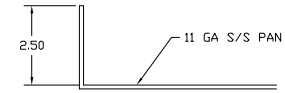
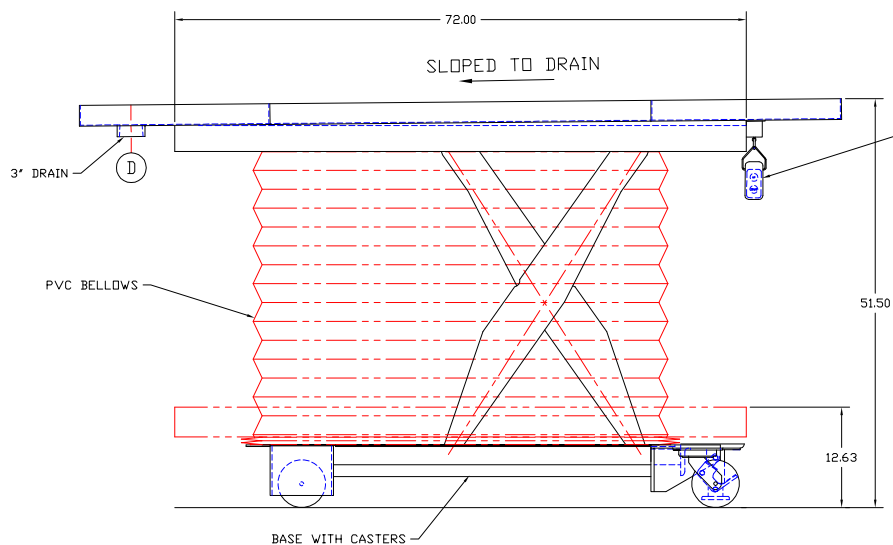
### POWER CHARACTERISTICS

PRIMARY VOLTAGE:-----115/1/60 Hz.  
 MOTOR:-----1 HP TENV- NEMA 4 Boldor epoxy coated motor w/  
 water tight wiring & internal to machine  
 CONTROLS:-----Up/Down hand held pushbutton control in NEMA 4  
 enclosure - Linestarter transformer  
 CONTROL VOLTAGE:-----115 V  
 RISE TIME:-----73 seconds  
 APPROX SHIPPING WT.:-----1800 lbs.

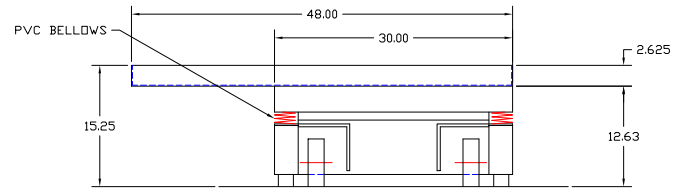
### UTILITY REQUIREMENTS

- (E) — ELECTRICAL - 115 V., 1 PH., 60 Hz. (3-PRONG GROUNDED PLUG w/ 8'-0" LG. CORD)
- (D) — DRAIN - 3" NPT FLOOR DRAIN MIN

-----  
**APPROVED**  
 -----  
 PRINT NAME:  
 DATE:  
 SIGNATURE:



SECTION A-A



This print is the property of TBJ Incorporated. The information contained herein is confidential, it is not transferable. It is furnished with the clear understanding that it is not to be traced, reproduced or used in any other process of manufacturing without written permission from the owner and is returnable upon request.

LET.	REVISION	BY	DATE
1671 ORCHARD DRIVE CHAMBERSBURG, PA 17201			
SCALE	NTS	DRAWN BY	ALE
REF DWG	- R08013	DATE	4-17-09
<b>2000# LIFT-TYPE NECROPSY TABLE</b>			
ROUGH-IN ASSEMBLY			R09058