

## SPECIFICATIONS

CAPACITY:-----6000 lbs uniform load  
 LOW HEIGHT:-----12.625" approx.  
 VERTICAL TRAVEL:-----36.0"  
 RAISED HEIGHT:-----48.63"  
 BASE FRAME SIZE:-----24" wide x 48" long  
 PLATFORM SIZE:-----24" wide x 66" long of 1/4" plate  
 BELLOWS GUARD:-----Neoprene coated nylon  
 ACTUATION:----- (3) - 3.5" bore Southworth single acting cylinder

### POWER CHARACTERISTICS

PRIMARY VOLTAGE:-----208 V/3 PH/60 Hz  
 MOTOR:-----1 HP TENV- NEMA 4 Baldor epoxy coated motor w/  
 water tight wiring & internal to machine  
 CONTROLS:-----Up/Down hand held pushbutton control in NEMA 4  
 enclosure - Linestarter transformer  
 CONTROL VOLTAGE:-----24/1/60  
 RISE TIME:-----73 seconds  
 APPROX SHIPPING WT:-----1800 lbs.

### UTILITY REQUIREMENTS

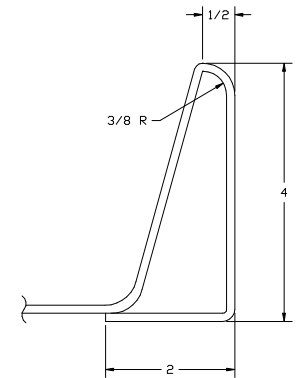
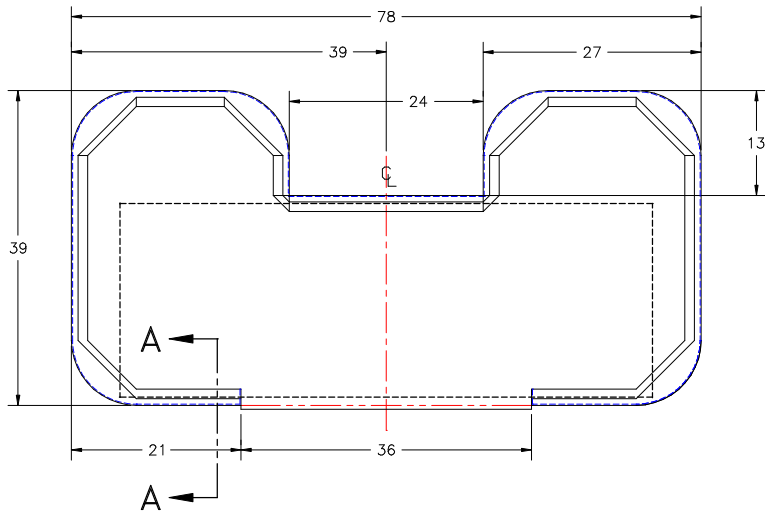
ⓔ — ELECTRICAL - 208 V., 3 PH., 60 Hz., 8.4 AMP

APPROVED

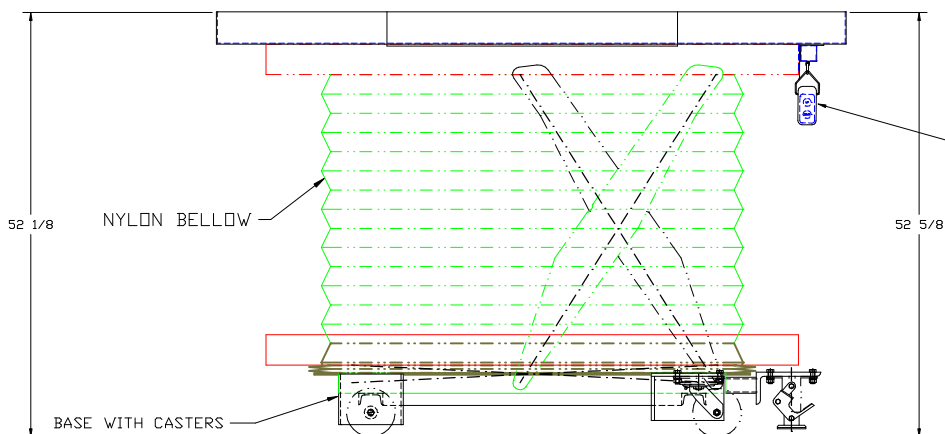
PRINT NAME:

DATE:

SIGNATURE:

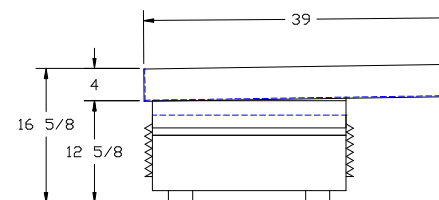


SECTION A-A  
SCALE: FULL



HAND HELD PUSH-BUTTON  
HEIGHT CONTROL W/ 2 FT  
CORD (FAR SIDE)

TABLE SLOPED 1/2" TO DRAIN



LET.	REVISION	BY	DATE
<b>TBJ INC</b>		1671 ORCHARD DRIVE CHAMBERSBURG, PA 17201	
SCALE NTS	DRAWN BY BSC		
REF DWG - R05008	DATE 3-22-05		
6000# LIFT-TYPE NECROPSY TABLE			
ROUGH-IN ASSEMBLY		R05044	