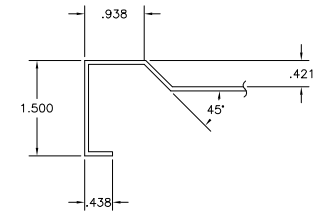
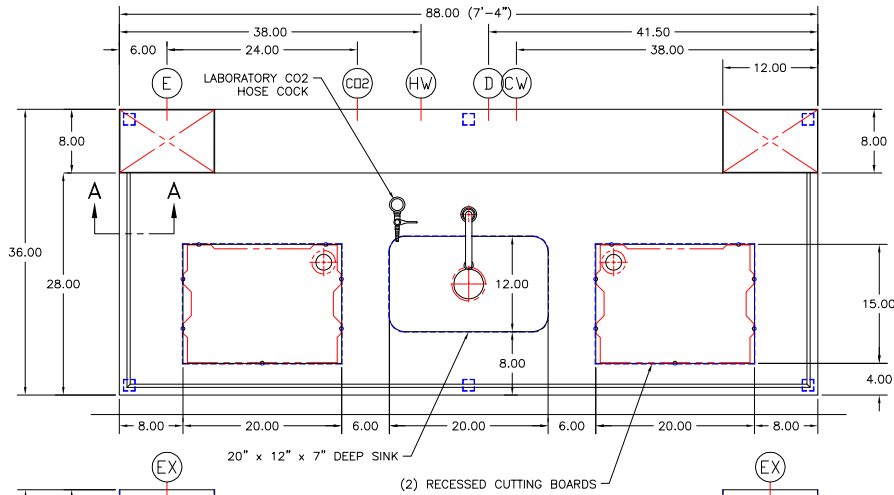


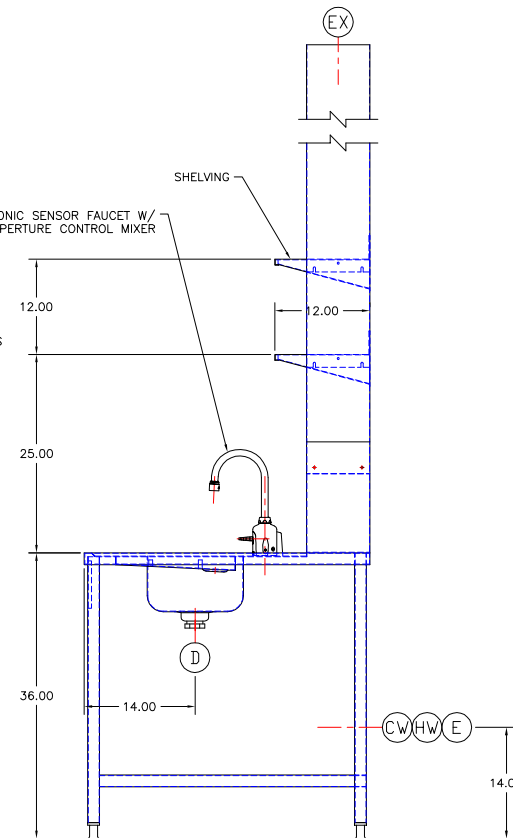
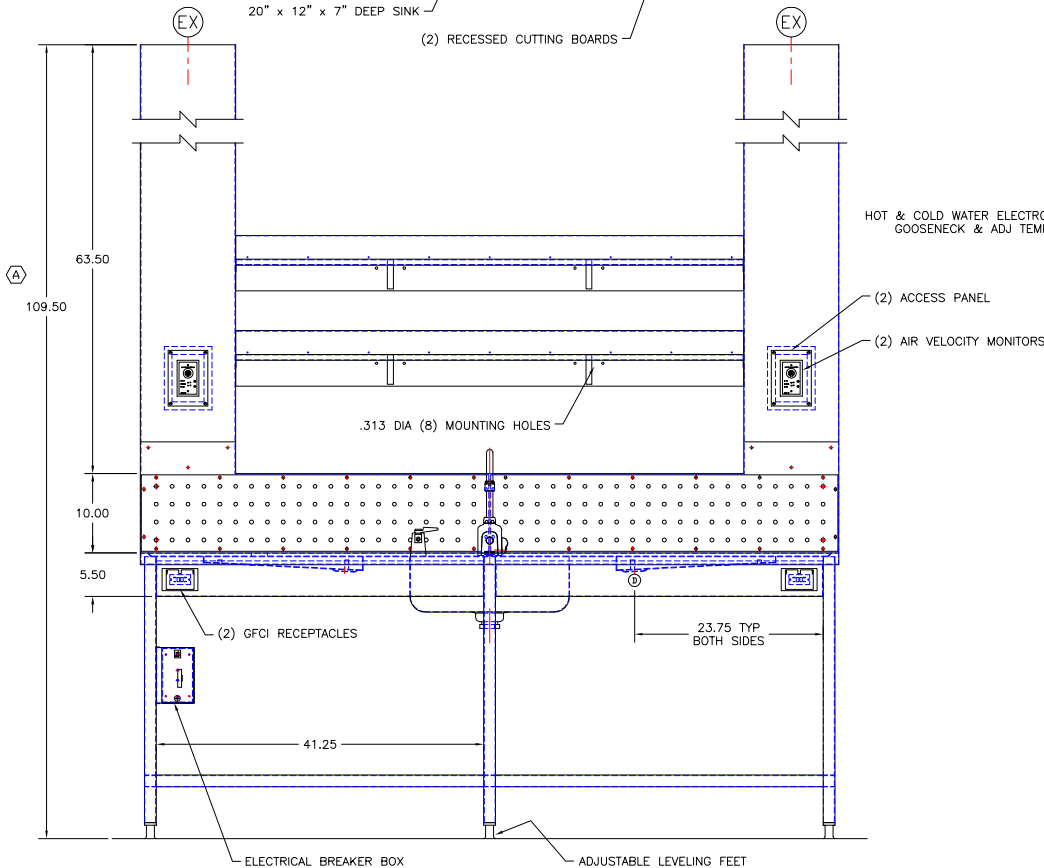
This print is the property of TBJ Incorporated. The information contained herein is confidential, it is not transferable. It is furnished with the clear understanding that it is not to be traced, reproduced or used in any other process of manufacturing without written permission from the owner and is returnable upon request.

UTILITY REQUIREMENTS

- ⓔ — ELECTRICAL — 115 V., 1 PH., 60 Hz., 15 AMP
- ⓐ — COLD WATER — 1/2" I.P.S.
- ⓓ — HOT WATER — 1/2" I.P.S.
- ⓓ — DRAIN — 1-1/2" I.P.S.
- ⓔ — EXHAUST — 2 @ 8" x 12" OUTSIDE DIMS.
- ⓐ — CARBON DIOXIDE — 3/8" COPPER PIPE



SECTION A-A
SCALE: FULL



APPROVED

PRINT NAME:

DATE:

SIGNATURE:

QUANTITY - (2)

A	UPDATED DUCT'S OVERALL HEIGHT	ALE	12-19-08
LET	REVISION	BY	DATE
TBJ INC	1671 ORCHARD DRIVE CHAMBERSBURG, PA 17201		
SCALE: NTS	DRAWN BY: ALE		
REF DWG - R06267	DATE: 9-2-08		
36-88 BACKDRAFT TABLE			
ROUGH-IN ASSY		R08174	