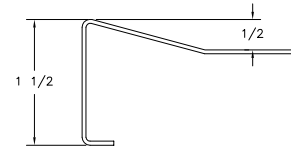


UTILITY REQUIREMENTS

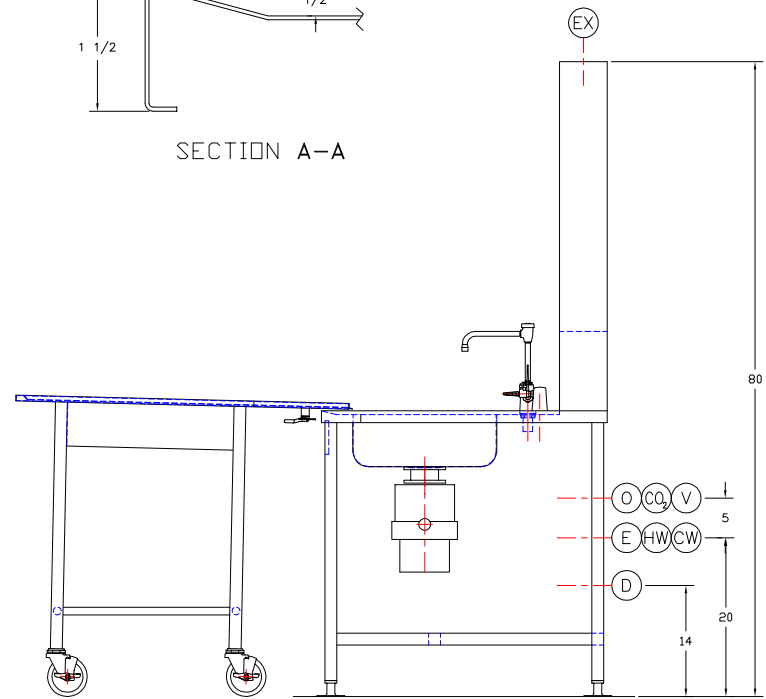
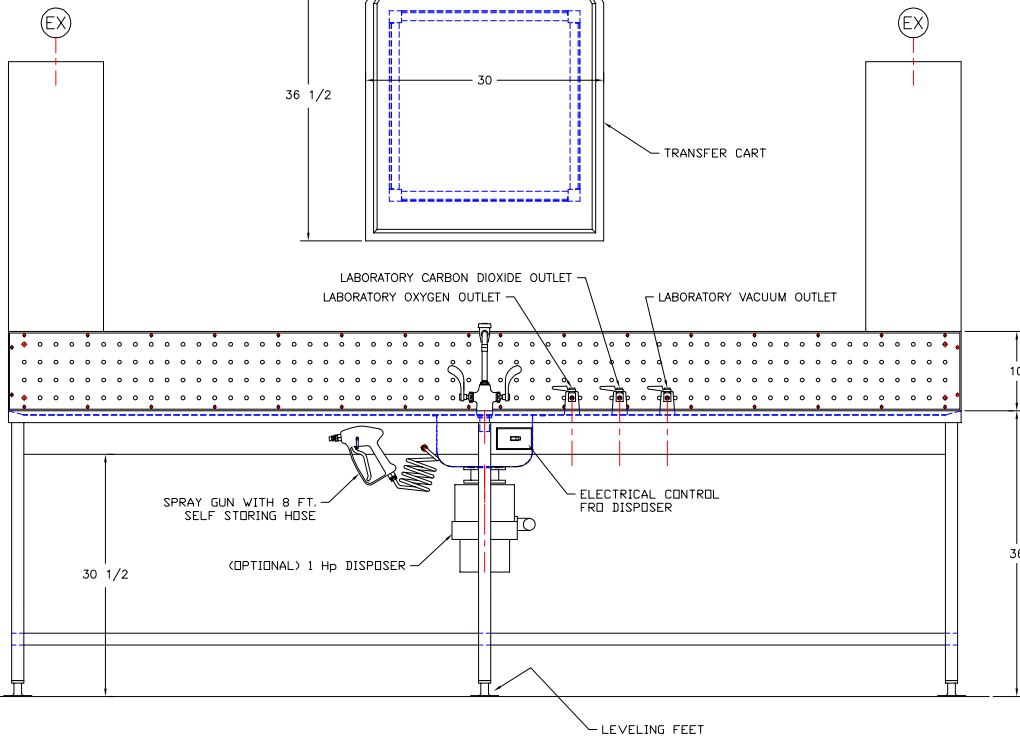
- (E) — ELECTRICAL — 115 V., 1 PH., 60 Hz., 20 AMP.
- (CW) — COLD WATER — 1/2" I.P.S.
- (HW) — HOT WATER — 1/2" I.P.S.
- (D) — DRAIN — 1-1/2" I.P.S.
- (EX) — EXHAUST — 2 @ 6" x 12', 600 CFM EACH
- (O) — LABORATORY OXYGEN — 3/8" I.P.S.
- (CO₂) — LABORATORY CARBON DIOXIDE — 3/8" I.P.S.
- (V) — LABORATORY VACUUM — 3/8" I.P.S.

APPROVED

PRINT NAME: _____
 DATE: _____
 SIGNATURE: _____



SECTION A-A



This print is the property of TBJ Incorporated. The information contained herein is confidential, it is not transferable. It is furnished with the clear understanding that it is not to be traced, reproduced or used in any other process of manufacturing without written permission from the owner and is returnable upon request.

		1671 ORCHARD DRIVE CHAMBERSBURG, PA 17201	
		SCALE: NTS	DRAWN BY: ALE DATE: 2-1-02
BD 36-120-S BACKDRAFT TABLE		ROUGH-IN ASSY	
LET	REVISION	BY	DATE
			R02024