

TBJ Model 35-104 Wall Mounted Workstations (ref. dwg. R96008)

TBJ's Wall Mounted Dissection Stations are designed to provide a complete ventilated work station that is both functional and easy to maintain. Sizes can be customized to meet specific space requirements.

Standard Design and Construction:

Units are constructed of 100% heavy-gauge stainless steel with a polished finish. All welded, wetted components are constructed of Type 304 construction. The work surface area includes (2) cutting board depressions with individual drains which allow cutting boards to be elevated and fluids to flow freely to drain. The sink is equipped with a swivel gooseneck faucet with vacuum breaker.

The workstations are equipped with a backdraft exhaust panel to the rear of the work surface and sink to capture and control odors from sources such as formalin during procedures. These units can be connected directly to the existing in-house ventilation system via top-mounted duct connections or they can be designed to connect back through a wall to conceal the duct connections.

The transfer/dissecting cart is made of heavy-duty, Type 304, stainless-steel construction. The cart is designed to dock to the wall-mounted station. When docked to the wall-mounted station, the cart overhangs into the sink to allow drainage of fluids into the sink. The cart is equipped with (4) stainless-steel swivel casters with locking brakes.

Installation requirements:

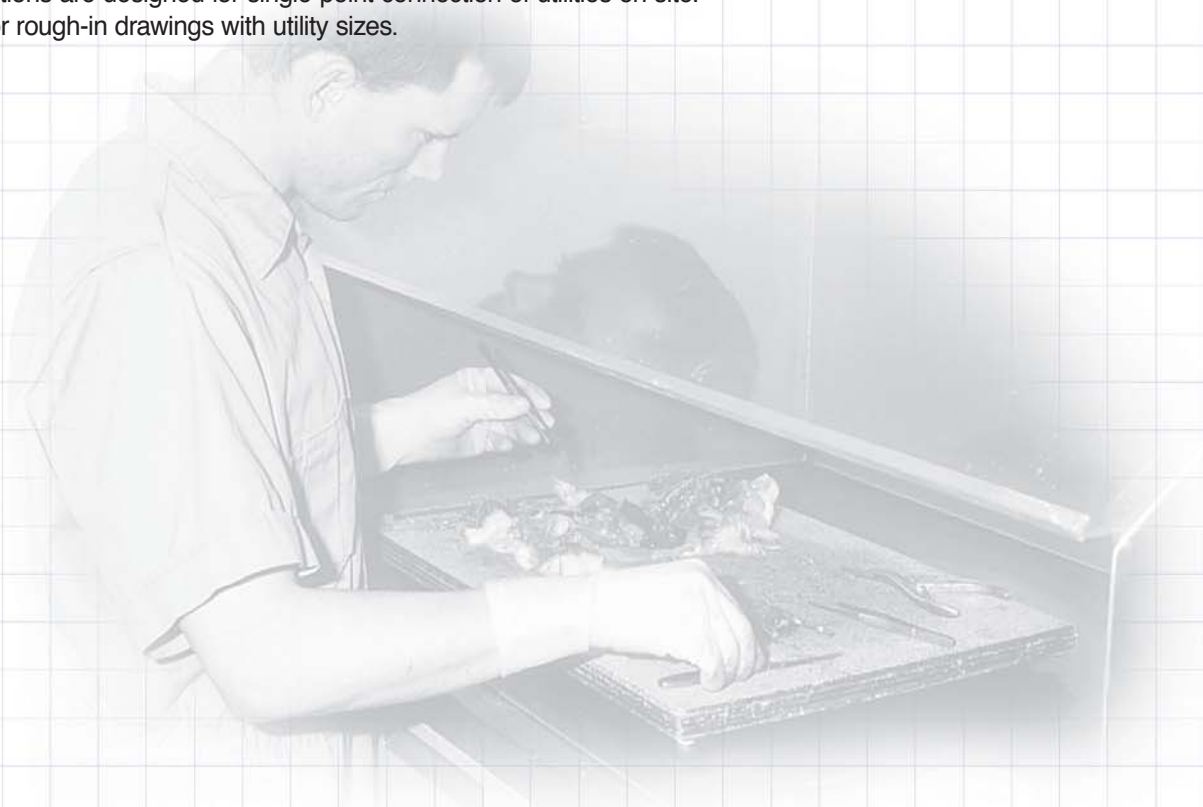
These workstations are designed for single-point connection of utilities on site. Contact TBJ for rough-in drawings with utility sizes.

Included Features:

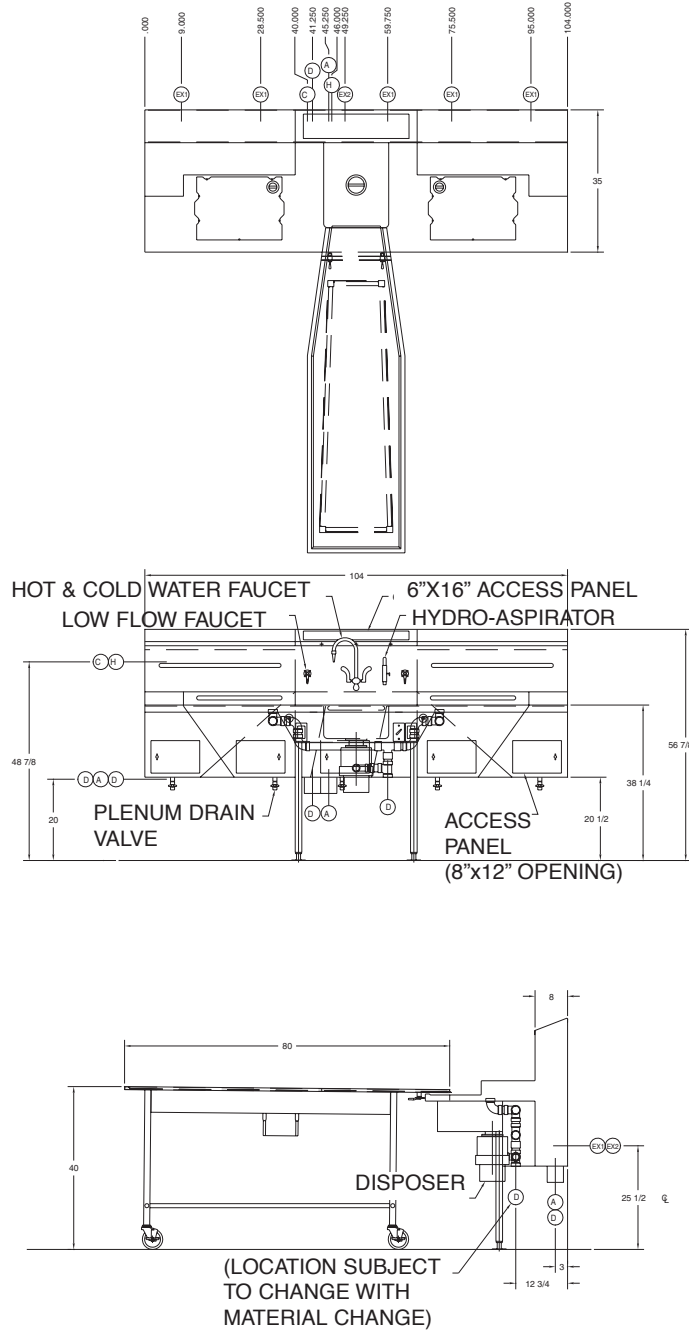
- Spray gun with recoil hose
- Hot-and-cold gooseneck faucet
- (2) cutting board workstations
- Heavy-duty Type 304 construction
- (2) Low flow water outlets

Optional Features:

- 1)HP heavy-duty disposer
- Hydro-aspirator system
- GFCI receptacles
- Small specimen strainer
- (2) high density thermoplastic cutting boards



**TBJ Model Wall Mounted
Workstations (ref. dwg. R96008)**



This print is the property of TBJ Incorporated. The information contained herein is confidential, it is not transferable. It is furnished with the clear understanding that it is not to be traced, reproduced or used in any process of manufacturing without written permission from the owner and is returnable upon request. Any infringement upon the patent rights shown herein, whether in whole or part, will be severely prosecuted.

Warranty

All components are warranted to be free from defects in material and workmanship for a period of one (1) year, when used in accordance with manufacturer's instructions.

TBJ
INCORPORATED

1671 Orchard Drive
Chambersburg, PA 17201
Phone: (717) 261-9700
Fax: (717) 261-1730

Specification and drawing are subject to change without notice unless certified by factory.

Utility Requirements

- C** --- Cold Water - 1/2" I.P.S. (Stub Thru Wall at Indicated Location)
- H** --- Hot Water - 1/2" I.P.S. (Stub Thru Wall at Indicated Location)
- D** --- Drain - 1/2" I.P.S.
- A** --- Electrical - 115V., 1 PH., 60 Hz., 15 Amps, 36" Whip for Connection
- EX** --- Exhaust - 6.250" x 12.250" Connection
- EX** --- Exhaust - 6.250" x 8.250" Connection