

TBJ Model 32-86 DD Downdraft Anatomy Dissecting Table (ref. dwg. R03033)

Description:

The TBJ Model 32-86 DD Downdraft Gross Anatomy Dissecting table is designed to provide a ventilated workstation for human anatomy dissection procedures and for cadaver storage when not in use. The table shall function to pull air, odors and vapors from chemicals such as formaldehyde down and away from the face of personnel when connected to a negative air source, thus providing a healthier, safer work environment. The table shall include (2) hinged covers to totally enclose the dissecting work area and cadaver.

Standard Design and Construction:

Overall table dimensions shall be 86" long x 32" wide x 36" high.

The table shall draw room air equally from both sides of the table when connected to a negative air source via slots on the interior side of the table perimeter rail. This design shall enhance the direction and control of captured air and fumes.

An adjustable volume damper control shall be located at the end of the table for easy access for control of the air flow volume across the work area.

An atmospheric damper shall be included on the table to allow continued air flow volume when the table covers are closed to allow for continuous balance of air on the facility HVAC system.

The table shall be provided with a 3" x 11" rectangular duct connection.

The table shall utilize Type 304 stainless steel construction. All welds shall be heliarc. All exposed welds shall be ground and polished.

The table pan shall be pitched to allow drainage and collection of waste associated with the specimen. The table shall have (2) panels, one located at each end of the pan, completely welded in place to direct and balance the exhausting of air within the system.

A removable 20" x 82" body/specimen tray is included. The tray is pitched to a drain hole and shall be easily removable for cleaning underneath the tray.

A sliding viewing port shall be located on each side of the table to allow observation/maintenance of the table drain trough below the body tray so that the tray/specimen does not need to be removed.

The hinged cover shall include (2) positive locks per side to lock the hood in the down position.

Each hinged cover shall include (2) grab handles that swivel in place to provide ease in lowering and raising the hood.

The table shall be equipped with 1 1/2" PVC ball valve to control drainage from the table.

Each corner of the table shall include a 3/8" ID socket for placement of an optional book stand.

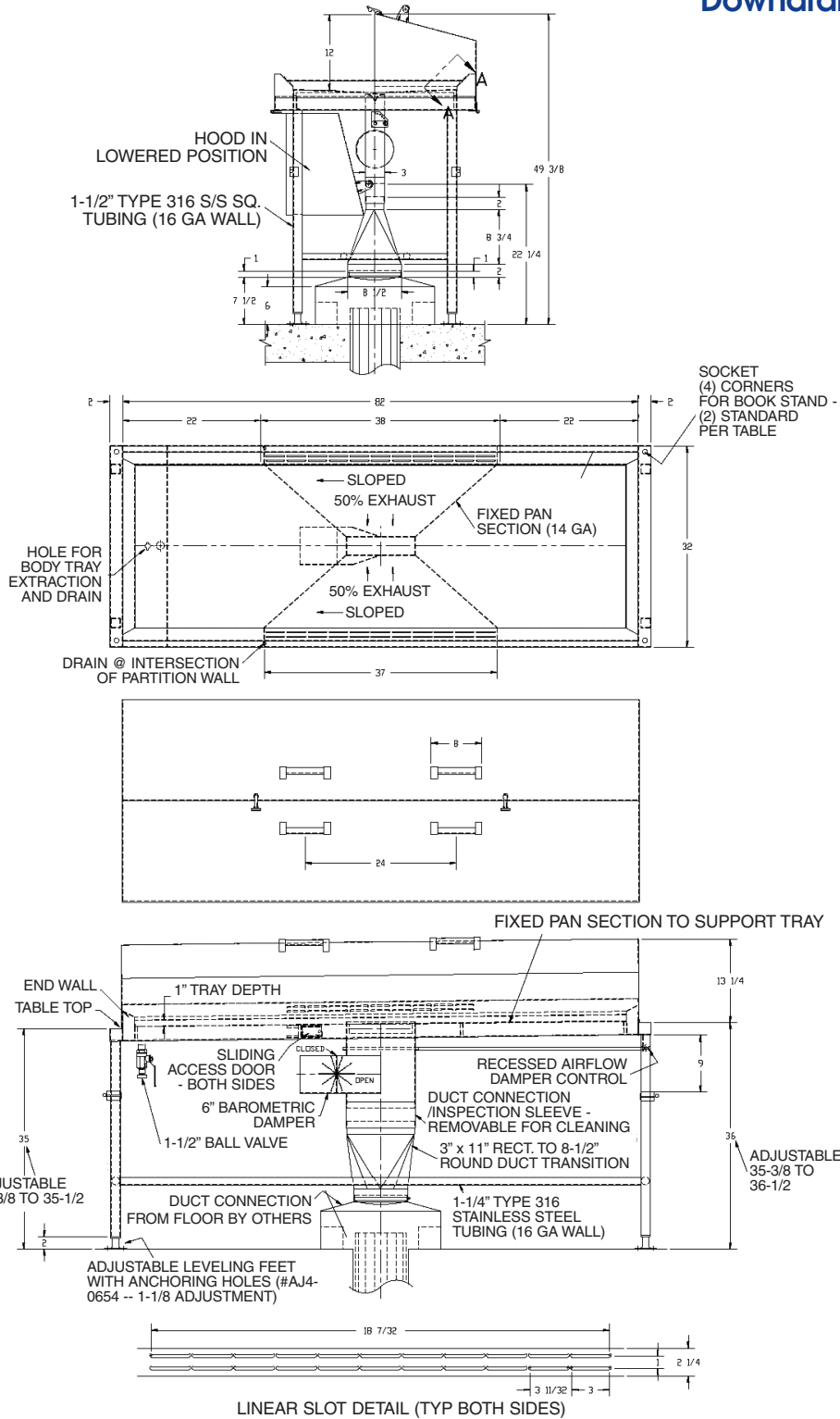
An optional stainless steel drain bucket and a removable stainless steel book stand can be provided.

The table shall be manufactured in the United States and utilize American made components where applicable.

Materials:

- Pan – 14 gauge type 304 stainless steel
- Body tray – 14 gauge type 30 stainless steel
- Frame/Legs – 16 gauge wall stainless tubing
- Hood covers – 16 gauge stainless steel
- (4) stainless steel adjustable leveling feet
- Cover handles – stainless steel tubing
- Cover latches – EPDM rubber
- Exhaust duct – 16 gauge type 304 stainless stl.
- Damper – Type 304 stainless steel
- Barometric damper – Type 304 stainless steel

**TBJ Model 32-86 DD
Downdraft Anatomy Dissecting
Table (ref. dwg. R03033)**



Specification and drawing are subject to change without notice unless certified by factory.

Utility Requirements

- EX** --- Exhaust - 3" x 11" , 275 CFM.
- D** --- Drain - 2" I.P.S.



1671 Orchard Drive
Chambersburg, PA 17201
Phone: (717) 261-9700
Fax: (717) 261-1730
Email: salesbj@innernet.net
www.tbjinc.com