

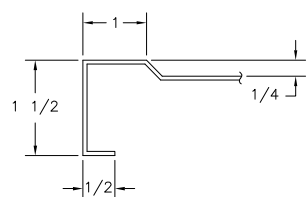
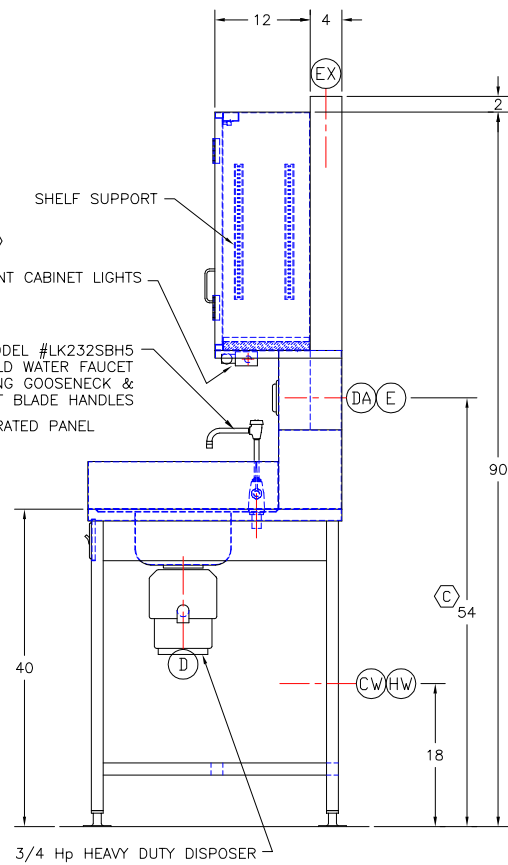
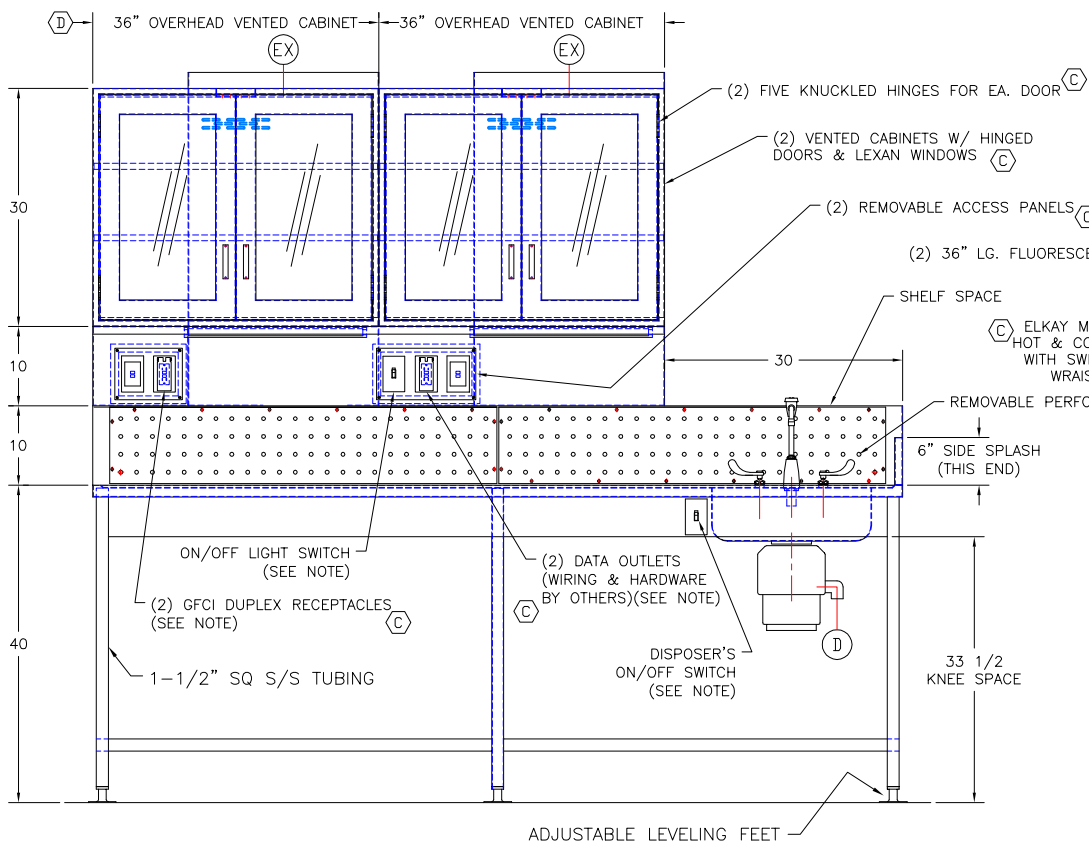
UTILITY REQUIREMENTS

- (E) — ELECTRICAL — 115V., 1 PH., 60 Hz., 20 AMP SERVICE
- (CW) — COLD WATER — 1/2" I.P.S.
- (HW) — HOT WATER — 1/2" I.P.S.
- (D) — DRAIN — 1-1/2" I.P.S.
- (DA) — DATA — COMPUTER DATA SUPPLY (BY OTHERS)
- (EX) — EXHAUST — (2) @ 4" x 24", 550 CFM

(D) NOTE!!!
ALL SWITCHES, RECEPTACLES AND OUTLETS TO BE HUBELL OFFICE WHITE AND HAVE ST. STL COVER PLATE FOR WATER TIGHT PROTECTION

APPROVED

PRINT NAME:
DATE:
SIGNATURE:



SECTION A-A
SCALE: FULL

This print is the property of TBJ Incorporated. The information contained herein is confidential, it is not transferable. It is furnished with the clear understanding that it is not to be traced, reproduced or used in any other process of manufacturing without written permission from the owner and is returnable upon request. Any infringement upon the patent rights shown herein, whether in whole or part, will be severely prosecuted.

D	UPDATED PER CUSTOMER'S COMMENTS	ALE	2-2-05
C	ADDED NOTES & REQ'D DATA SUPPLY LOCATION	ALE	12-27-04
B	UPDATED THE REQ'S # OF DATA & GFCI OUTLETS	ALE	7-6-04
A	MOVED CABINETS FORWARD 40"; INCREASED TABLE'S DEPTH 20" & REARRANGED DUCTS DIMS. FOR NEW DESIGN	ALE	7-1-04
LET	REVISION	BY	DATE
TBJ INC		1671 ORCHARD DRIVE CHAMBERSBURG, PA 17201	
SCALE	NTS	DRAWN BY	ALE
		DATE	6-22-04
30-102 BACKDRAFT TABLE			
ROUGH-IN ASSY		R04099	