

## TBJ Model 31-60 BD Backdraft Table (ref. dwg. R96086)

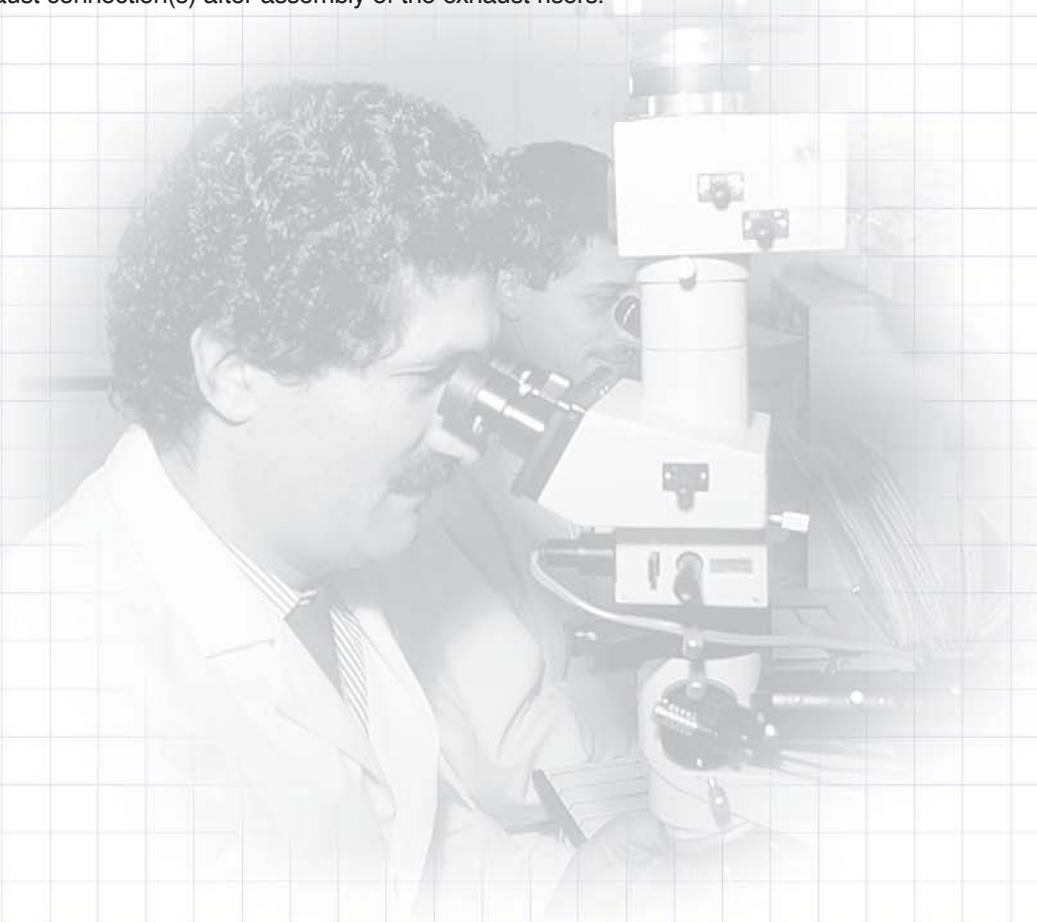
The TBJ Model 31-60 Backdraft Table provides a vented workstation that controls odors and fumes by exhausting air back and away from users while providing an even capture velocity across the work surface in front of the backdraft assembly.

The overall length of the unit shall be 60" long x 31" wide. The work surface height shall be adjustable from 30" to 40" by means of (4) hydraulic cylinders that operate from an electrically controlled push-button switch. The louvered (or perforated) exhaust panel shall consist of (1) 60" long x 10" high panel. The panel shall be easily removable via 1/4 turn fasteners to permit periodic cleaning. The depth of the plenum shall be 8". The exhaust risers shall include a flexible bellows and have outside dimensions of 8" x 12".

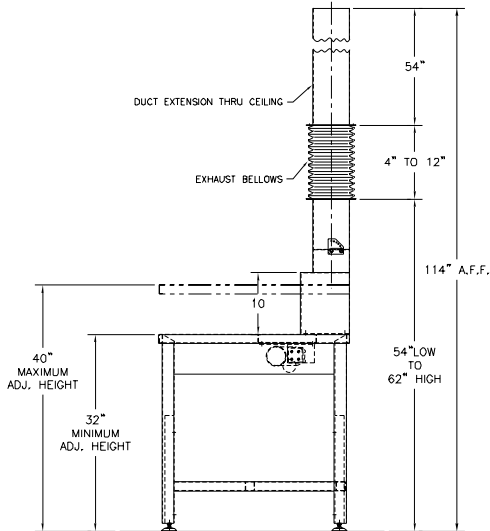
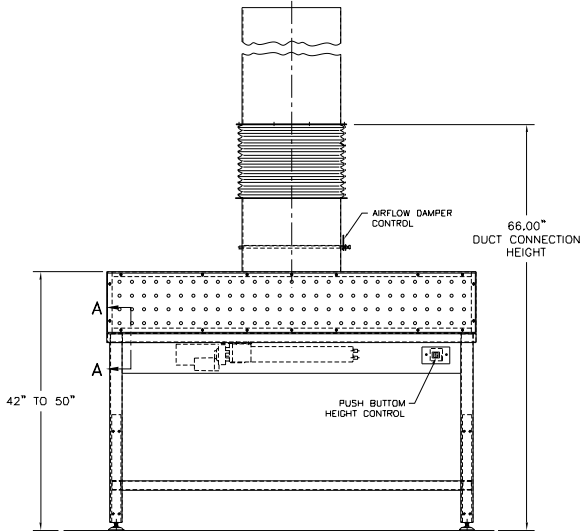
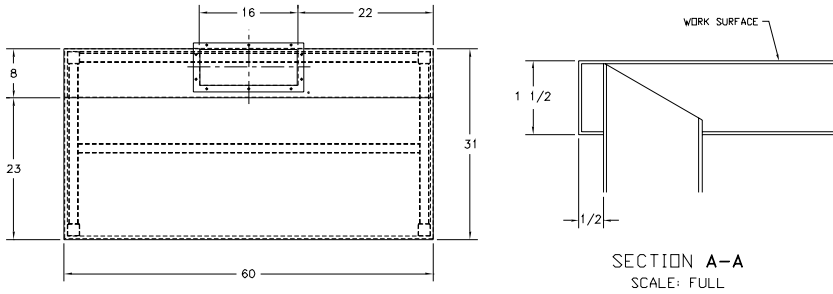
Type 316 stainless steel shall be utilized for all welded-wetted components for resistance to mild acids. The louvered (or perforated) diffuser panel shall be 18 gauge Type 316 stainless steel. All welds shall be ground and polished. The table top shall be 16 ga. stainless steel with #4 finish and shall be laterally reinforced for rigidity.

Leg supports shall be 1-1/2" square-stainless steel tubing with 16 ga. wall thickness. Legs shall be provided with adjustable sanitary feet for leveling.

The unit shall be supplied complete and ready for single-point connection to the building exhaust connection(s) after assembly of the exhaust risers.



**TBJ Model 31-60 BD  
Backdraft Table (ref. dwg. R96086)**



This print is the property of TBJ Incorporated. The information contained herein is confidential, it is not transferable. It is furnished with the clear understanding that it is not to be traced, reproduced or used in any process of manufacturing without written permission from the owner and is returnable upon request. Any infringement upon the patent rights shown herein, whether in whole or part, will be severely prosecuted.

**Warranty**

All components are warranted to be free from defects in material and workmanship for a period of one (1) year, when used in accordance with manufacturer's instructions.

*Specification and drawing are subject to change without notice unless certified by factory.*

**Utility Requirements**

**E** --- Electrical - 115 V., 1 PH., 60 Hz., 20 AMP

**EX** --- Exhaust - 8" X 12"

**TBJ**  
INCORPORATED

1671 Orchard Drive  
Chambersburg, PA 17201  
Phone: (717) 261-9700  
Fax: (717) 261-1730