

TBJ Model 30-60-S DD Downdraft Workstation (ref. dwg. R94029)

The TBJ Model 30-60-S DD Downdraft Table is designed to provide a ventilated workstation for animal necropsies, surgeries, perfusions, and dissections. The table shall function to pull air, odors, vapors, and aerosols down and away from the face of personnel when connected to a negative air source. Chemicals such as formalin, alcohol, and xylene are controlled and can be kept below OSHA permissible exposure limits thus providing a healthier, safer work environment.

Standard Design and Construction:

Overall table dimensions shall be 60" long x 30" wide. The work surface height shall be 37" high. The vented work surface area shall be 36" long x 27" wide.

The table shall utilize Type 316 stainless-steel construction for all welded-wetted sink and drain pan components. All welds shall be heliarc. All exposed welds shall be ground to a seamless polished finish.

The table shall utilize 18 gauge T316 stainless-steel, removable, perforated, work-surface panels. The panels shall be recessed 1/4" below the table perimeter to prevent fluids from escaping the work area.

The table shall utilize a stainless-steel, precision, engineered, removable, internal baffling system to create a uniform downdraft air velocity across the entire perforated work surface.

An exhaust connection shall be located on the top of the table. The table shall include a manually-adjustable exhaust damper for varying the air volume and downdraft velocity.

NOTE: Exhaust connections can be located on the top for through-ceiling connection, on the back for through-wall connection, or on the bottom for through-floor connections. Connections can also be round or rectangular.

The table drain pan shall be sloped to one end, under the exhaust plenum, for complete drainage and shall be designed for ease of cleanability to prevent buildup of debris and bacteria.

The table shall utilize a control valve, vacuum breaker, and (2) flush down manifolds which horizontally run the length of each side of the table, below the work surface to rinse away fluids and debris.

The table shall include an easily-removable, stainless-steel sink with large radius corners to allow for ease of disinfection of entire table. The sink shall be on the non-exhaust end so as not to obstruct the air flow.

The table shall be equipped with a chrome-plated, hot-and-cold laboratory faucet with vacuum breaker, swing spout, and clear phenolic finish.

The table shall include a hand spray gun assembly with 8 ft. recoil hose for table cleanup.

The table shall utilize a double pedestal design which provides knee and leg room beneath the table, thus allowing the user the option of stool-height seating or standing during procedures.

The table shall be factory pre-plumbed and pre-wired ready for single-point connection of utilities on site.

The table shall be manufactured in the United States and utilize American-made components where applicable.

Options and Accessories:

(consult options brochure for more detailed information)

- SGN Caisson filter housing with bagging type HEPA filter 95% DOP, pleated pre-filter and charcoal filter, stainless steel
- SGN Caisson filter housing with bagging type HEPA filter 99.9% DOP, pleated pre-filter and charcoal filter, stainless steel
- Manual or electric push-button height adjustability
- 10" ID Type S s/s flexible duct, 10 ft. section
- Ground-fault circuit interrupter (GFCI) receptacle
- 1 HP heavy-duty disposer
- Hydro-Aspirator system
- Eye wash hose/spray assembly
- Hand spray assembly with recoil hose
- Vacuum connection fitting
- Air connection fitting
- Gas connection fitting
- Distilled water connection fitting
- Formalin dispensing fitting with 3/8" I.D. barbed nozzle
- Detachable side shelf
- Detachable, sliding instrument tray
- Adjustable arm, swivel-type surgical light
- Motorized, adjustable damper in lieu of manual damper
- Computer data ports
- Work surface dividers

TBJ Model 30-60-S DD Downdraft Workstation (ref. dwg. R94029)

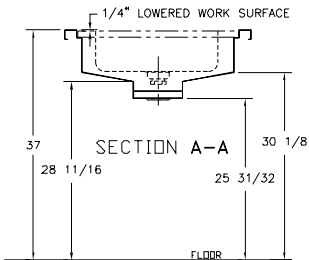
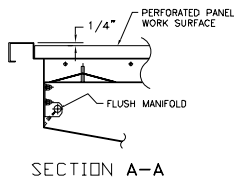
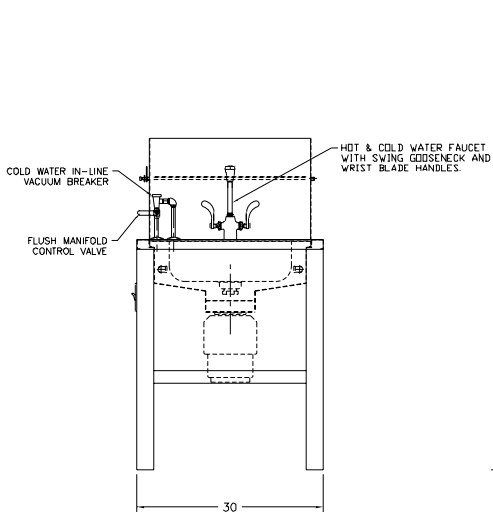
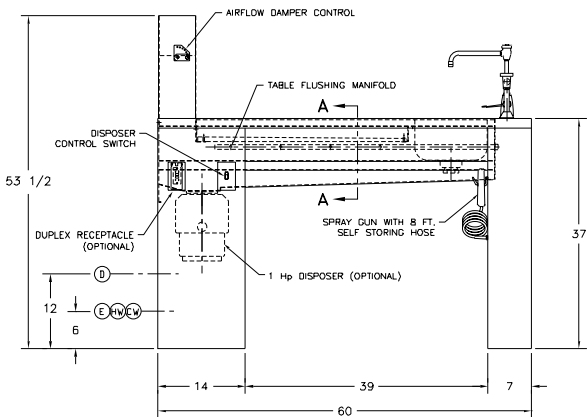
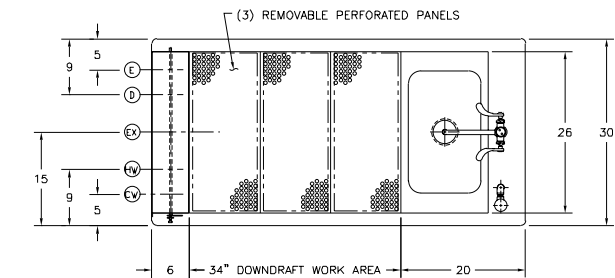


Table Exhaust Information

The following chart should be used as a guide for determining the maximum building exhaust volume required for specific downdraft velocities.

NOTE: Facility air handling outlets adjacent to the table work surface wall can alter capture values.

Air Velocity	Volumetric Air Flow (CFM)
80	465.6
90	523.8
100	582.0
110	640.2
120	698.4
130	756.6
140	814.8
150	873.0

Warranty

All components are warranted to be free from defects in material and workmanship for a period of one (1) year, when used in accordance with manufacturer's instructions.

Specification and drawing are subject to change without notice unless certified by factory.

Utility Requirements

- CW --- Cold Water - 1/2" I.P.S.
- HW --- Hot Water - 1/2" I.P.S.
- D --- Drain - 2" I.P.S.
- EX --- Exhaust - 6" X 26"

TBJ
INCORPORATED

1671 Orchard Drive
Chambersburg, PA 17201
Phone: (717) 261-9700
Fax: (717) 261-1730