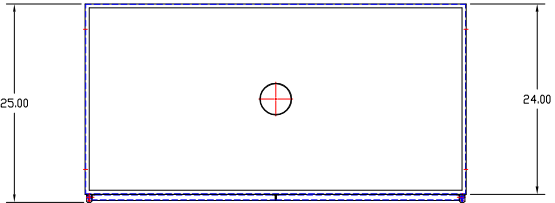


This print is the property of TBJ Incorporated. The information contained herein is confidential, it is not transferable. It is furnished with the clear understanding that it is not to be traced, reproduced or used in any other process of manufacturing without written permission from the owner and is returnable upon request.

UTILITY REQUIREMENTS

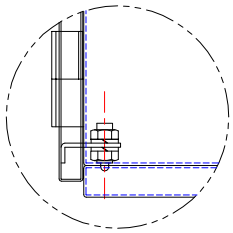
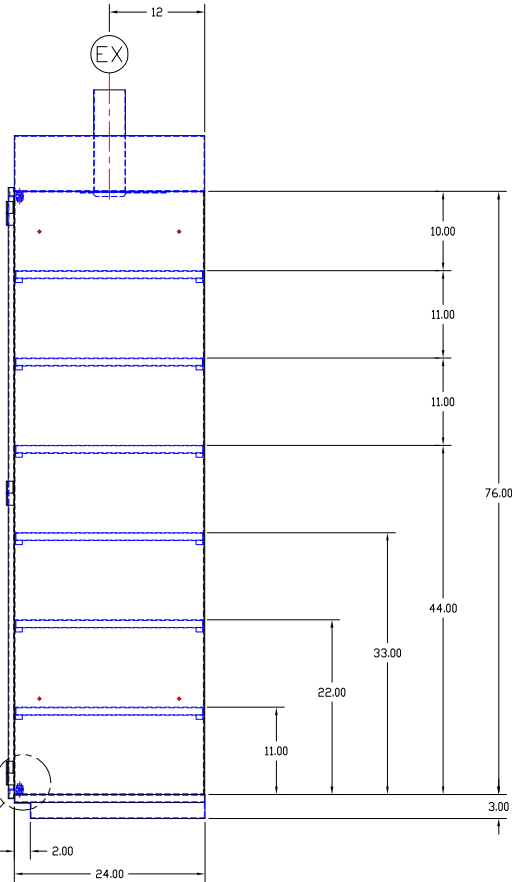
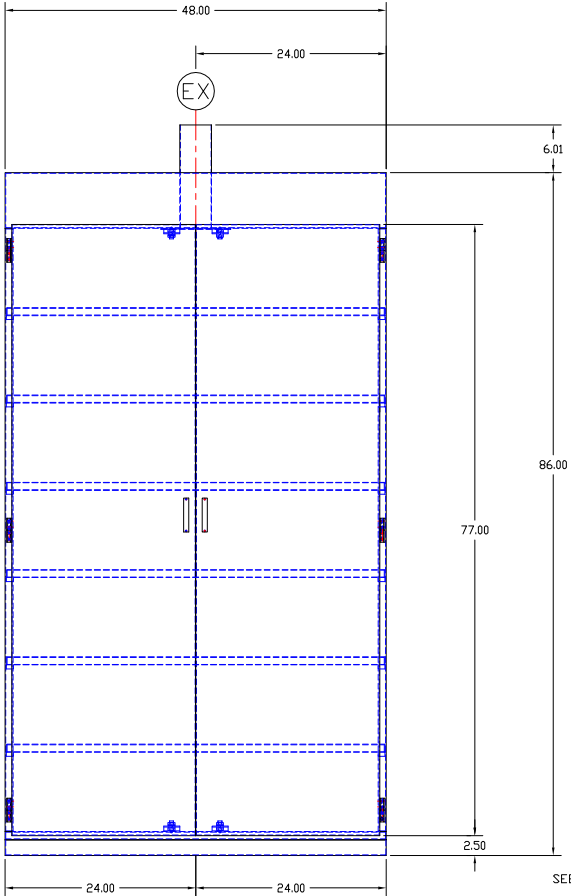


⊙ EX - EXHAUST ----- 4" OUTSIDE DIA. - 60 CFM

NOTE:
MATL- 14 GA STAINLESS STEEL T304 #4 FINISH

APPROVED

PRINT NAME;
DATE;
SIGNATURE;



VIEW A

BRAIN & COGNITIVE SCIENCES PROJECT, GC&A
PROJECT NO. 5012
ITEM # E19

FOR REVIEW ONLY

LET	REVISION	BY	DATE
TBJ INC			
SCALE NTS		DRAWN BY JEG	
REF DWG - R98013		DATE 6-24-04	
24-48 VSC - VENTED STORAGE CABINET			
ROUGH-IN ASSY			R04102