



TBJ Model 22-18



“Drop-In” Downdraft Workstation (ref. dwg. R93049)

The TBJ Model 22-18 “Drop-In” Workstation is designed to provide protection from hazardous and offensive odors by pulling air down and away from the breathing zone of workers. It is designed so that it can be dropped into both new and existing tables, counters, or casework. Standard features include a spacious 24” x 18” removable perforated work surface, gooseneck faucet with swing spout and wrist blade handles, and Type 316 stainless-steel construction.

Construction:

The work station features all Type 316 stainless-steel construction. The work surface consists of a removable 18 gauge perforated panel.

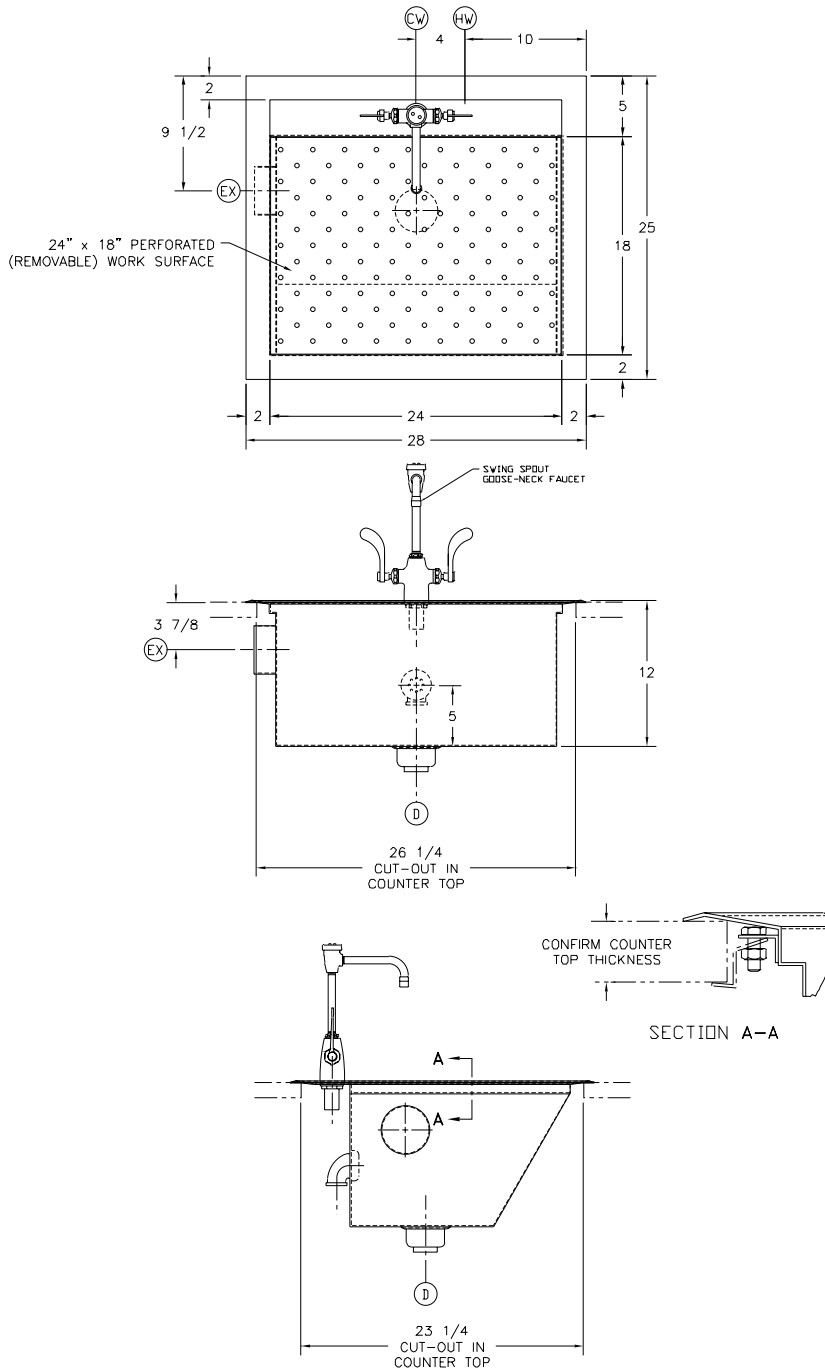
The base of the unit features 16 gauge construction with all welds ground and polished. The bottom pan is sloped for complete drainage. A 4” diameter exhaust connection is provided for connection to a negative air source supplied by others. The exhaust connection can be located as required per application.

Installation of the unit consists of dropping the unit into a 26” x 23” cut-out in the mounting surface and making final utility connections. Consult the Model 22-18 Rough-in drawing for details. Preparation of the installation area, cut-outs, and final utility connections shall be by others.

Options and Accessories:

- Thermoplastic cutting board, 1/2” x 12” x 18”
- 3/4 HP heavy duty disposer
- Hydro-Aspirator system (install by others)
- Eye wash hose/spray assembly
- Hand spray assembly with recoil hose
- Vacuum connection fitting (install by others)
- Air connection fitting (install by others)
- Gas connection fitting (install by others)
- Distilled water connection fitting

**TBJ Model 22-18 "Drop-In"
Downdraft Workstation**
(ref. dwg. R93049)



This print is the property of TBJ Incorporated. The information contained herein is confidential, it is not transferable. It is furnished with the clear understanding that it is not to be traced, reproduced or used in any process of manufacturing without written permission from the owner and is returnable upon request. Any infringement upon the patent rights shown herein, whether in whole or part, will be severely prosecuted.

Warranty:

This equipment shall be free from defects and workmanship for a period of one year from the date of installation.

Specification and drawing are subject to change without notice unless certified by factory.

Utility Requirements

- H** --- Hot Water - 1/2" I.P.S.
- C** --- Cold Water - 1/2" I.P.S.
- D** --- Drain - 1-1/2" I.P.S.
- E** --- Exhaust - 175 CFM, 4" Dia.

TBJ
INCORPORATED

1671 Orchard Drive
Chambersburg, PA 17201
Phone: (717) 261-9700
Fax: (717) 261-1730