

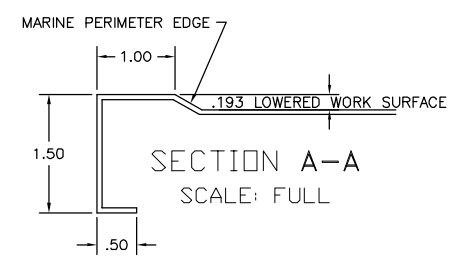
(3) 18.0" x 30.0" x 8.0" DP SINKS w/ ETCHED GALLON MARKINGS

UTILITY REQUIREMENTS

- (CW) — COLD WATER — (1) @ 3/4" NPT (SPRAY GUN); (3) @ 1/2" NPT
- (HW) — HOT WATER — (3) @ 1/2" NPT
- (DI) — DEIONIZED WATER — (1) @ 1/2" NPT (FLEX LINE BY OTHERS)
- (CA) — LABORATORY COMPRESSED AIR — (1) @ 3/4" NPT (FLEX LINE BY OTHERS)
- (D) — DRAIN — (3) @ 1-1/2" NPT
- (E) — ELECTRICAL — 115 V., 1 PH., 60 Hz., 15 AMP (3-PRONG PLUG)

INCLUDED OPTIONS

- RED OUTLETS (CHOP-STANDARD #GFTWRST83SNAPR)
- ADD OVERFLOW IN EACH SINK BOWL
- SPRAY GUN TIPS



FOR APPROVAL ONLY

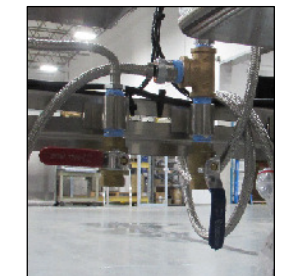
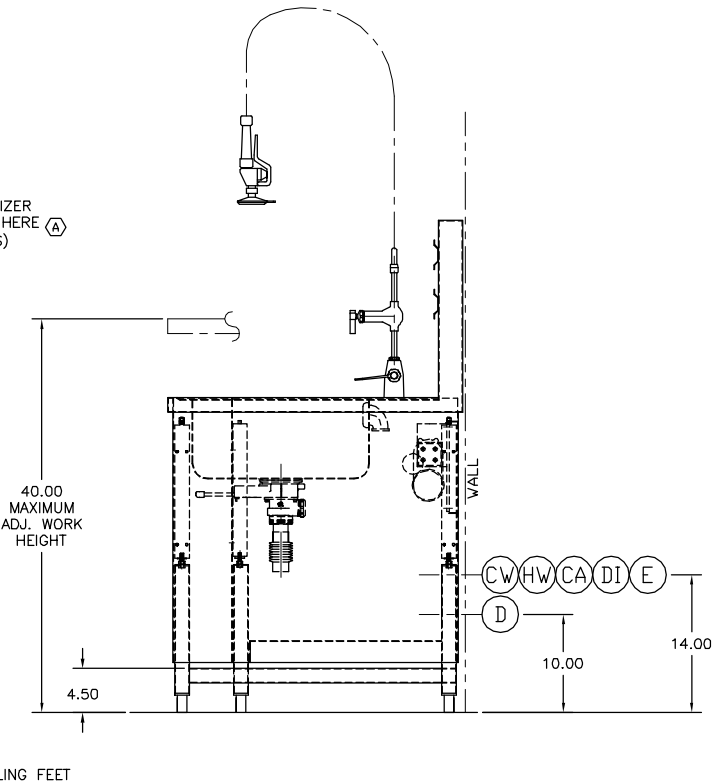
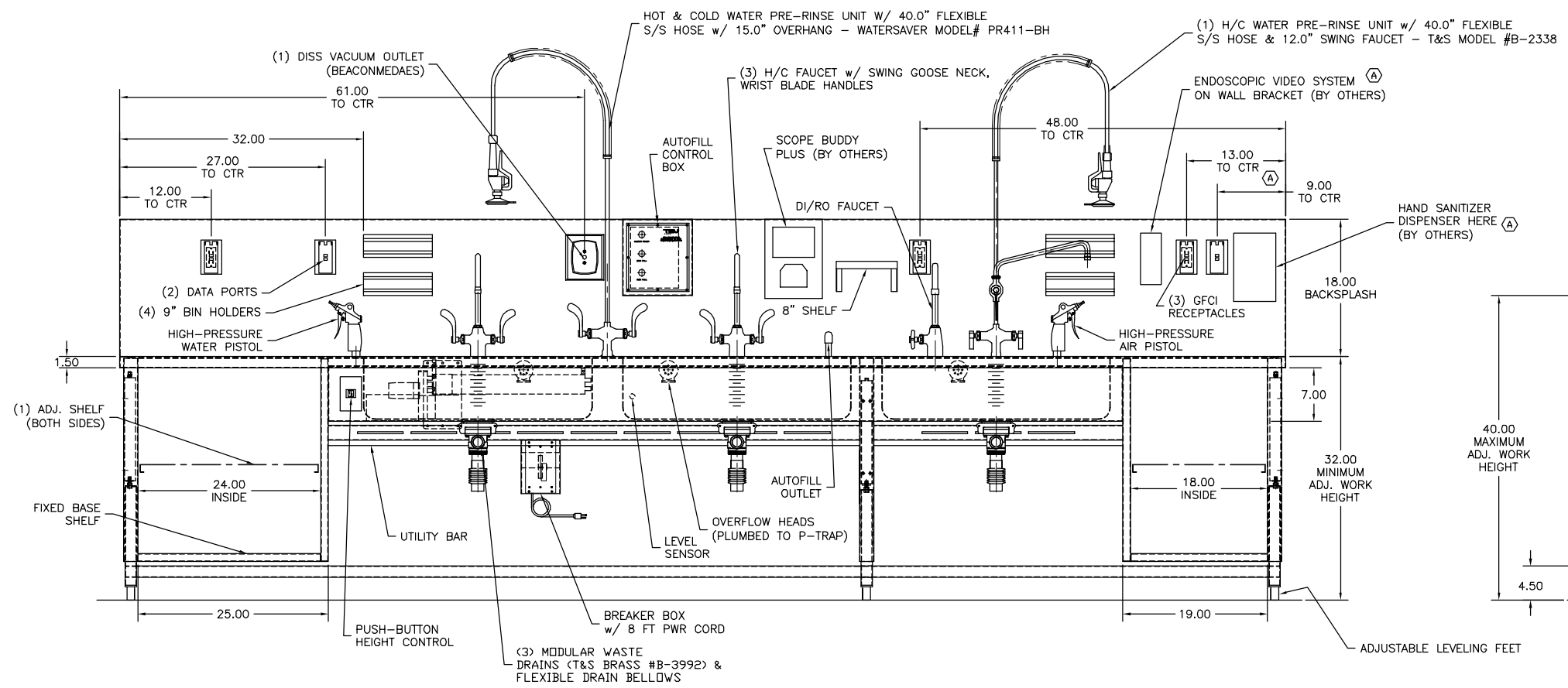
ONE (1) SET OF APPROVAL PRINTS MUST BE SIGNED AND RETURNED TO TBJ INC. BEFORE EQUIPMENT CAN BE RELEASED FOR PRODUCTION

APPROVED AS DRAWN FOR FABRICATION

NOT APPROVED - REVISE & RESUBMIT FOR FINAL APPROVAL

SIGNED _____

DATE _____



H/C VALVE DETAIL

NOTES: 1) MAX. OVERALL DIMENSIONS MUST BE CONSIDERED FOR BUILDING ENTRY.

C-400840.1S

(1) QTY - LEFT TO RIGHT

UNLESS OTHERWISE SPECIFIED		TOLERANCES IN INCHES:	
FRACTIONAL ± 1/32		ANGULAR ± 0°25'	
ONE DECIMAL ± 0.063		TWO DECIMAL ± 0.031	
THREE DECIMAL ± 0.015			
PROD. RELEASE	-	NAME	DATE
APPR. RELEASE	-		
REVIEWED BY	-		
ENG APPR.	-		
B	UPDATED AUTOFILL OUTLET	SMH	8/24/21
A	MOVED OUTLETS, ADDED BRACKET & SANITIZER DISP. NOTES	SMH	7/15/21
LET	REVISION	BY	DATE
		1671 ORCHARD DRIVE CHAMBERSBURG, PA 17201 Phone: (717) 261-9700 www.tbjinc.com	
SCALE 1-1/2"=1'-0"		DRAWN BY ALE	
REF DWG - R19195		DATE 6-28-21	
30-153-3B WS-AH WORK SINK		R21169	
ROUGH-IN ASSEMBLY			