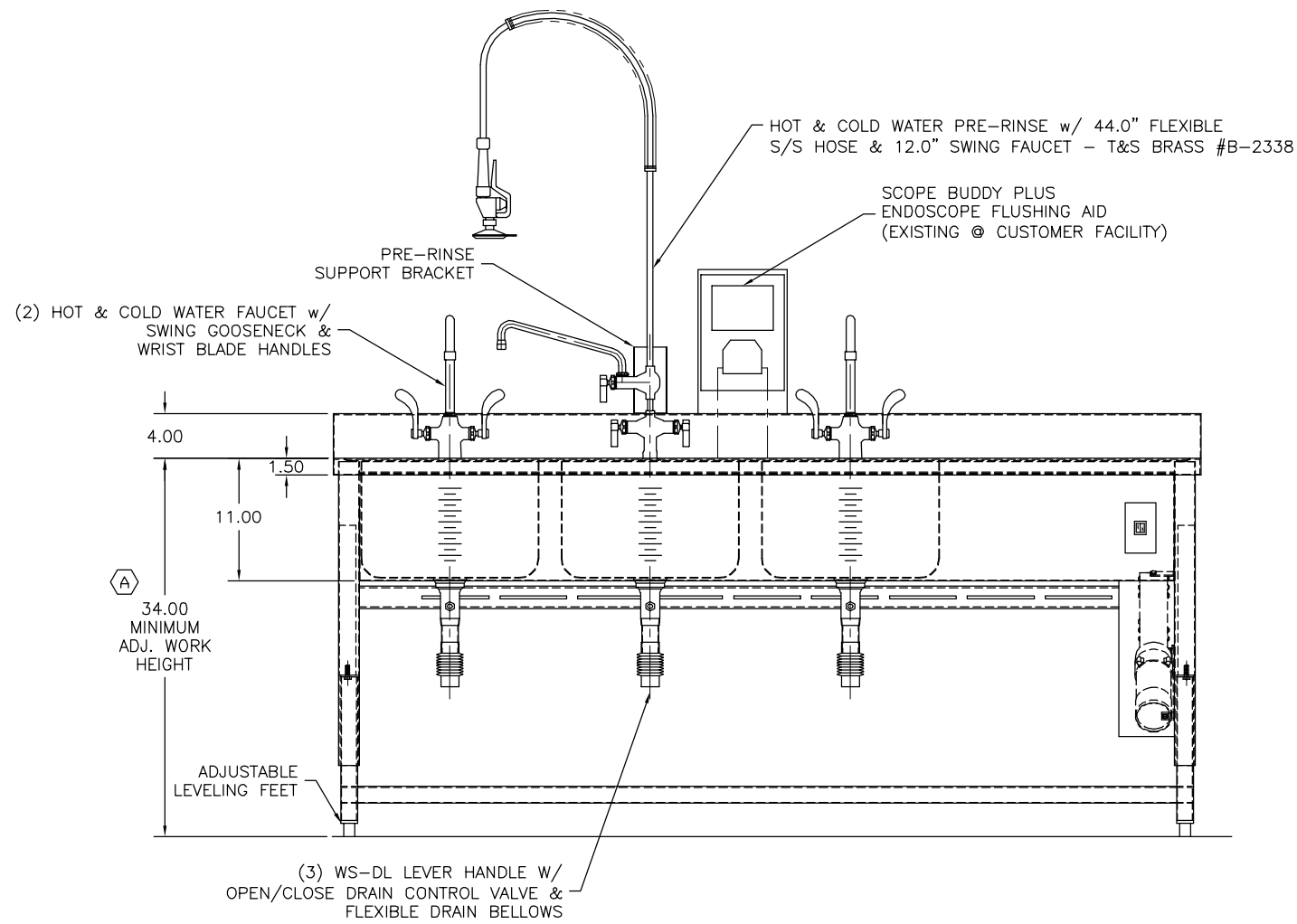


(3) 16.0 x 22.0 x 10.5 DP SINK
w/ ETCHED GALLON MARKS



UTILITY REQUIREMENTS

- (CW) — COLD WATER - (3) @ 1/2" NPT
- (HW) — HOT WATER - (3) @ 1/2" NPT
- (D) — DRAIN - (3) @ 1-1/2" NPT
- (E) — ELECTRICAL - 115 V., 1 PH., 60 Hz., 15 AMP

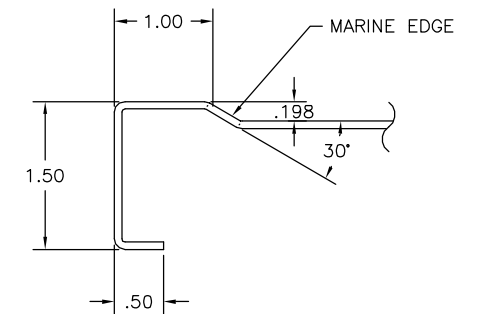
FOR APPROVAL ONLY

ONE (1) SET OF APPROVAL PRINTS
MUST BE SIGNED AND RETURNED TO
TBJ INC. BEFORE EQUIPMENT
CAN BE RELEASED FOR PRODUCTION

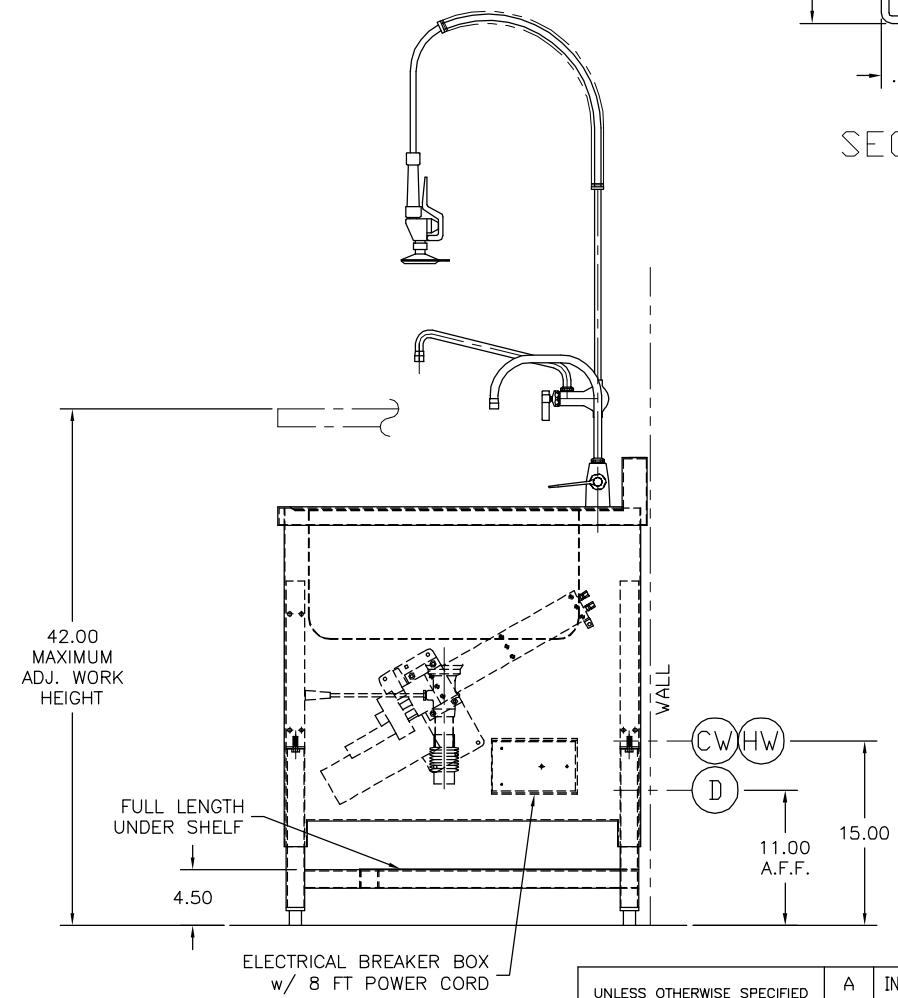
- APPROVED AS DRAWN
FOR FABRICATION
- NOT APPROVED - REVISE &
RESUBMIT FOR FINAL APPROVAL

SIGNED _____

DATE _____



SECTION A-A



ELECTRICAL BREAKER BOX
w/ 8 FT POWER CORD

UNLESS OTHERWISE SPECIFIED		A	INCREASED MIN. HT TO 34'	SMH	4/16/21
TOLERANCES IN INCHES: FRACTIONAL ± 1/32 ANGULAR ± 0°25' ONE DECIMAL ± 0.063 TWO DECIMAL ± 0.031 THREE DECIMAL ± 0.015		LET	REVISION	BY	DATE
		TBJ INCORPORATED		1671 ORCHARD DRIVE CHAMBERSBURG, PA 17201 Phone: (717) 261-9700 www.tbjinc.com	
		SCALE	NTS	DRAWN BY	SMH
		REF DWG -	R18067	DATE	4-14-21
PRD. RELEASE	-	30-78-3B SPCS-AH SCOPE PROCESSING SINK			
APPR. RELEASE	-	ROUGH-IN ASSEMBLY			
REVIEWED BY	-	R21093			
ENG APPR.	-				