

UTILITY REQUIREMENTS

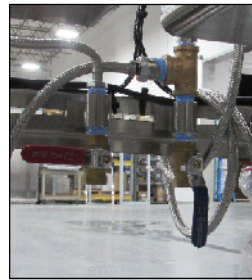
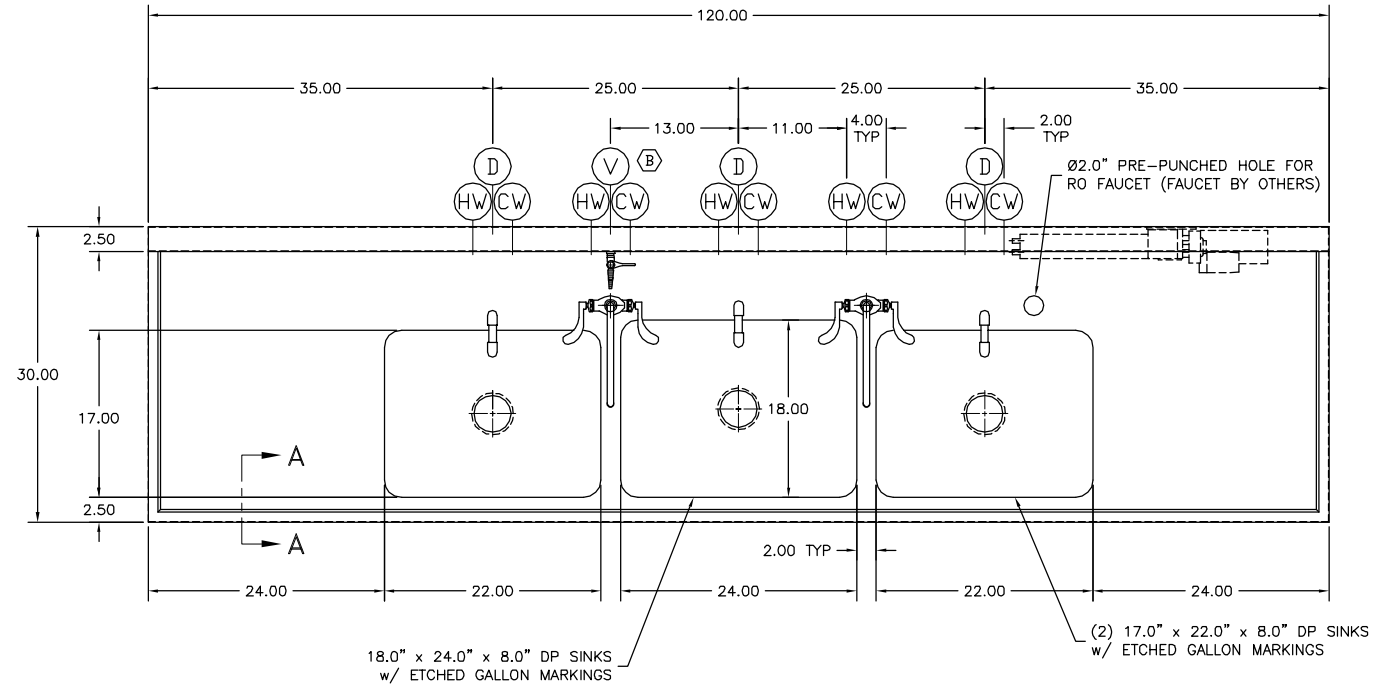
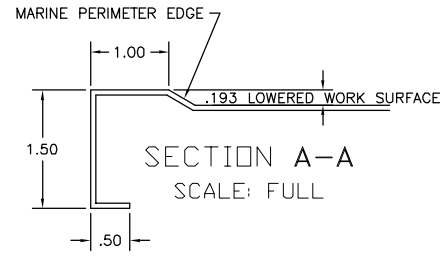
- (CW) COLD WATER - (5) @ 1/2" NPT
- (HW) HOT WATER - (5) @ 1/2" NPT
- (B)(V) LAB VACUUM - (1) @ 3/8" NPT
- (D) DRAIN - (3) @ 1-1/2" NPT
- (E) ELECTRICAL - (4) @ 115 V., 1 PH., 60 Hz., 15 AMP (3-PRONG PLUG)

FOR APPROVAL ONLY

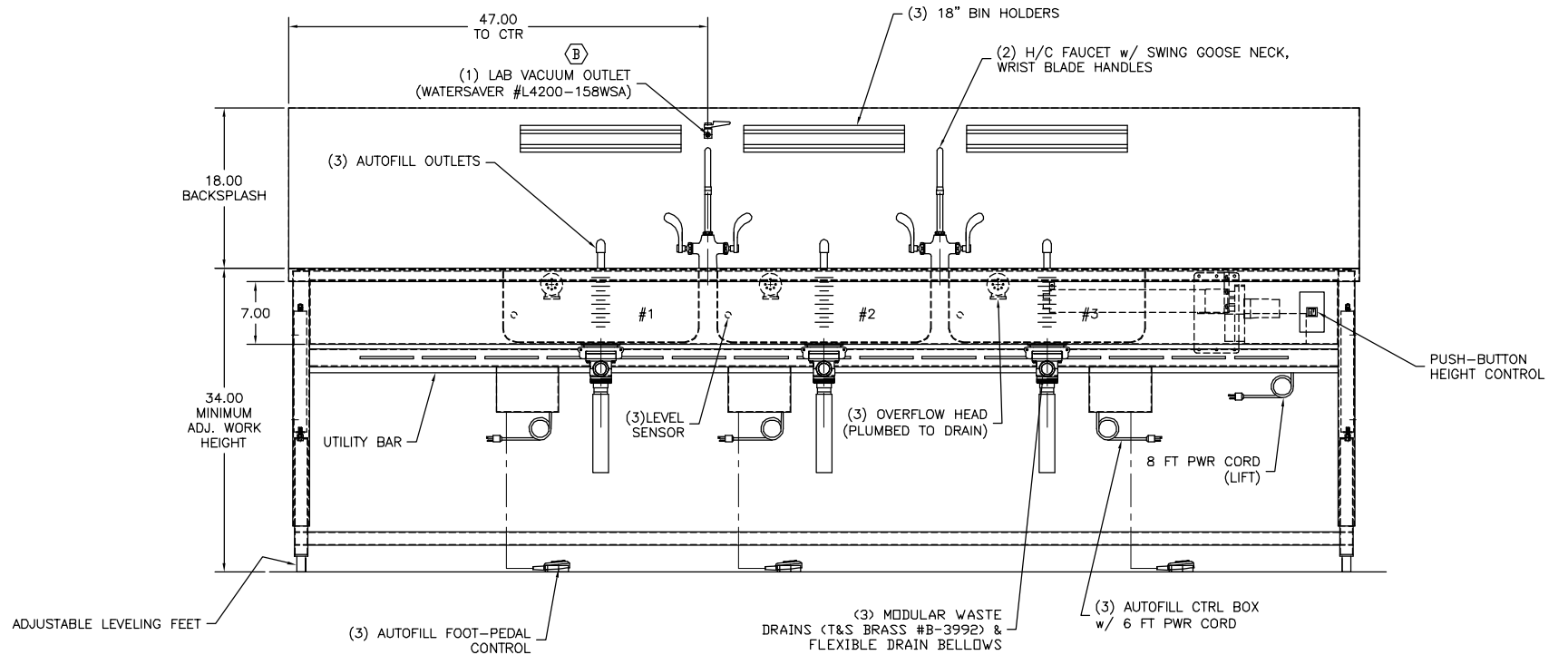
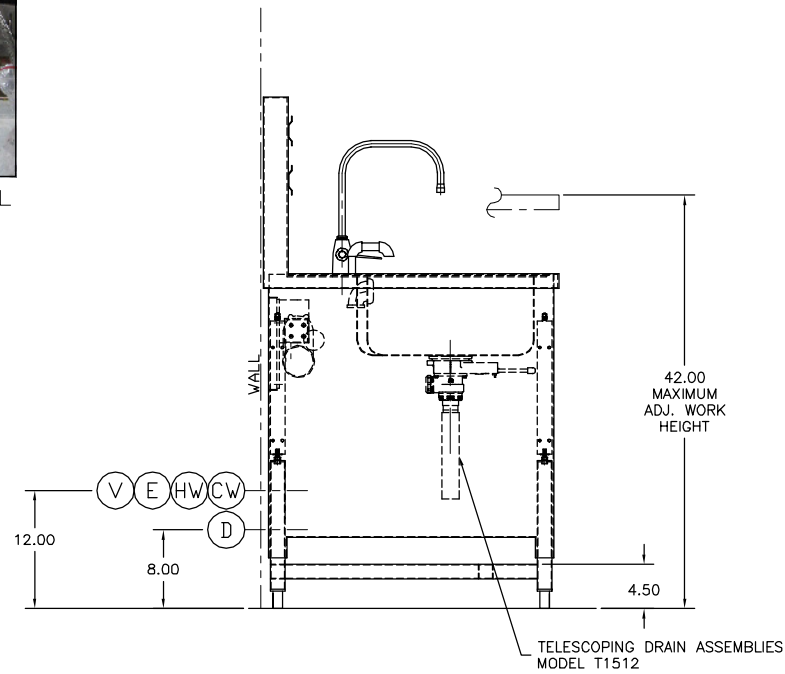
ONE (1) SET OF APPROVAL PRINTS MUST BE SIGNED AND RETURNED TO TBJ INC. BEFORE EQUIPMENT CAN BE RELEASED FOR PRODUCTION

- APPROVED AS DRAWN FOR FABRICATION
- NOT APPROVED - REVISE & RESUBMIT FOR FINAL APPROVAL

SIGNED \_\_\_\_\_  
DATE \_\_\_\_\_



H/C VALVE DETAIL



NOTES: 1) MAX. OVERALL DIMENSIONS MUST BE CONSIDERED FOR BUILDING ENTRY.

NOTE:  
- UNIT INCLUDES (6) MESH BASKETS (NOT SHOWN)

SCOPE PROCESSING SINK  
QTY (2)  
LEFT TO RIGHT

UNLESS OTHERWISE SPECIFIED	TOLERANCES IN INCHES:		B		UPDATED VACUUM OUTLET		SMH	3/22/21
	FRACTIONAL ± 1/32		A		GENERAL DRAWING UPDATES		SMH	3/4/21
ANGULAR ± 0°25'		LET		REVISION		BY	DATE	
ONE DECIMAL ± 0.063		TBJ		1671 ORCHARD DRIVE				
TWO DECIMAL ± 0.031		INCORPORATED		CHAMBERSBURG, PA 17201				
THREE DECIMAL ± 0.015		SCALE 1-1/2"=1'-0"		Phone: (717) 261-9700		www.tbjinc.com		
		REF DWG - R20063		3544-1		DRAWN BY SMH		
PRDD. RELEASE		NAME		DATE		DATE		9-16-20
APPR. RELEASE						30-120-3B WS-AH WORK SINK		
REVIEWED BY						ROUGH-IN ASSEMBLY		R20251
ENG APPR.								