

**UTILITY REQUIREMENTS**

- (CW) — COLD WATER — (1) @ 3/4" NPT (SPRAY GUN); (3) @ 1/2" NPT
- (HW) — HOT WATER — (3) @ 1/2" NPT
- (DI) — DEIONIZED WATER — (1) @ 1/2" NPT (FLEX LINE BY OTHERS)
- (CA) — LABORATORY COMPRESSED AIR — (1) @ 3/4" NPT (FLEX LINE BY OTHERS)
- (D) — DRAIN — (3) @ 1-1/2" NPT
- (E) — ELECTRICAL — 115 V., 1 PH., 60 Hz., 15 AMP (3-PRONG PLUG)

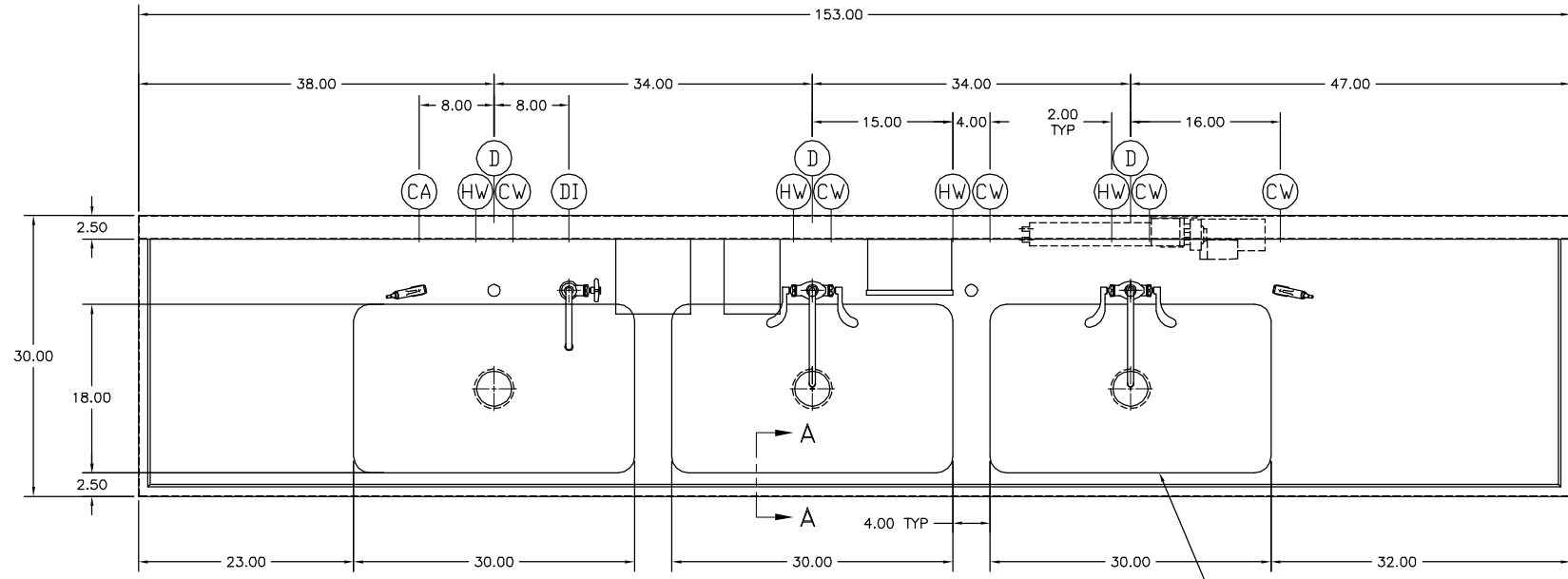
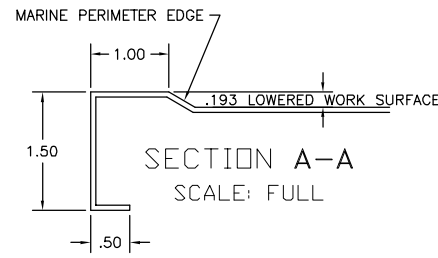
**FOR APPROVAL ONLY**

ONE (1) SET OF APPROVAL PRINTS MUST BE SIGNED AND RETURNED TO TBJ INC. BEFORE EQUIPMENT CAN BE RELEASED FOR PRODUCTION

- APPROVED AS DRAWN FOR FABRICATION
- NOT APPROVED — REVISE & RESUBMIT FOR FINAL APPROVAL

SIGNED \_\_\_\_\_

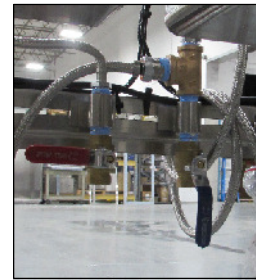
DATE \_\_\_\_\_



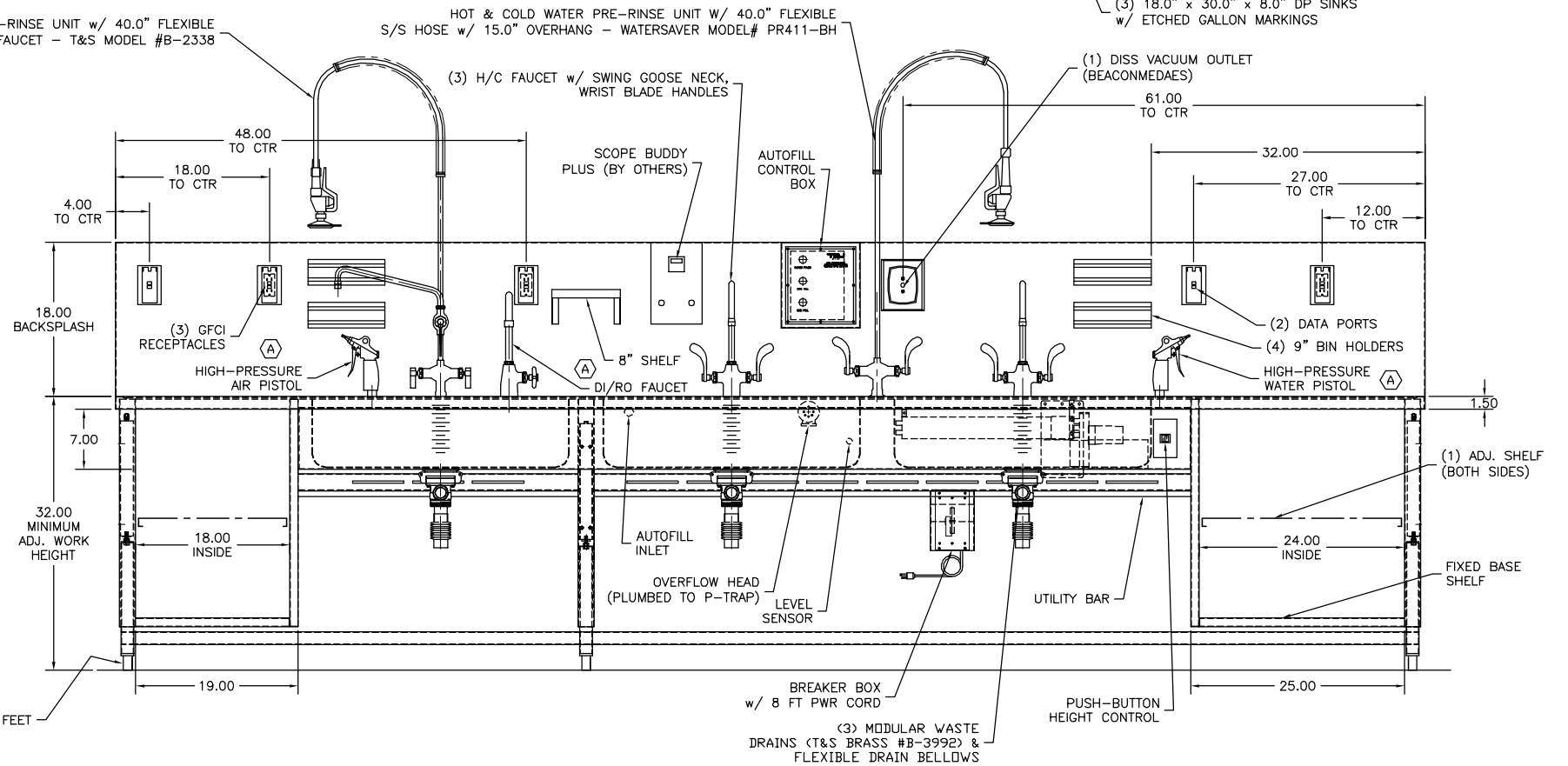
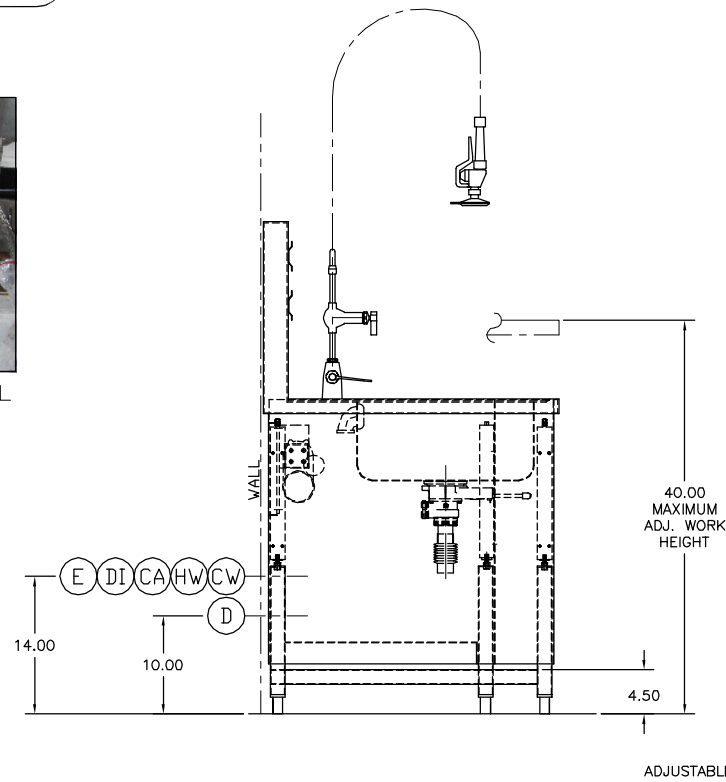
(1) H/C WATER PRE-RINSE UNIT w/ 40.0" FLEXIBLE S/S HOSE & 12.0" SWING FAUCET — T&S MODEL #B-2338

HOT & COLD WATER PRE-RINSE UNIT w/ 40.0" FLEXIBLE S/S HOSE w/ 15.0" OVERHANG — WATERSAVER MODEL# PR411-BH

(3) 18.0" x 30.0" x 8.0" DP SINKS w/ ETCHED GALLON MARKINGS



H/C VALVE DETAIL



NOTES: 1) MAX. OVERALL DIMENSIONS MUST BE CONSIDERED FOR BUILDING ENTRY.

UNLESS OTHERWISE SPECIFIED		A	ADDED SPRAY GUNS AND DI FAUCETS	SMH	5/7/20
TOLERANCES IN INCHES: FRACTIONAL ± 1/32 ANGULAR ± 0°25' ONE DECIMAL ± 0.063 TWO DECIMAL ± 0.031 THREE DECIMAL ± 0.015		LET	REVISION	BY	DATE
		<b>TBJ</b> INCORPORATED		1671 ORCHARD DRIVE CHAMBERSBURG, PA 17201 Phone: (717) 261-9700 www.tbjinc.com	
		SCALE 1-1/2"=1'-0"	3414-2	DRAWN BY	SMH
		REF DWG - R19195		DATE	2-25-20
PRD. RELEASE	SMH	4/15/20	30-153-3B WS-AH WORK SINK		
APPR. RELEASE	JQ	2/25/20			
REVIEWED BY					
ENG APPR.			ROUGH-IN ASSEMBLY	R20063	