

UTILITY REQUIREMENTS

- ⊙ CW — COLD WATER — (1) @ 1/2" NPT (FLEX LINE BY OTHERS)
- ⊙ HW — HOT WATER — (1) @ 1/2" NPT (FLEX LINE BY OTHERS)
- ⊙ D — DRAIN — (1) @ 1-1/2" NPT
- ⊙ E — ELECTRICAL — 115 V., 1 PH., 60 HZ., 15 AMP (FOR 3-PRONG GROUNDED PLUG)
- ⊙ DI — DEIONIZED WATER — 1/2" NPT (FLEX LINE BY OTHERS)

FOR APPROVAL ONLY

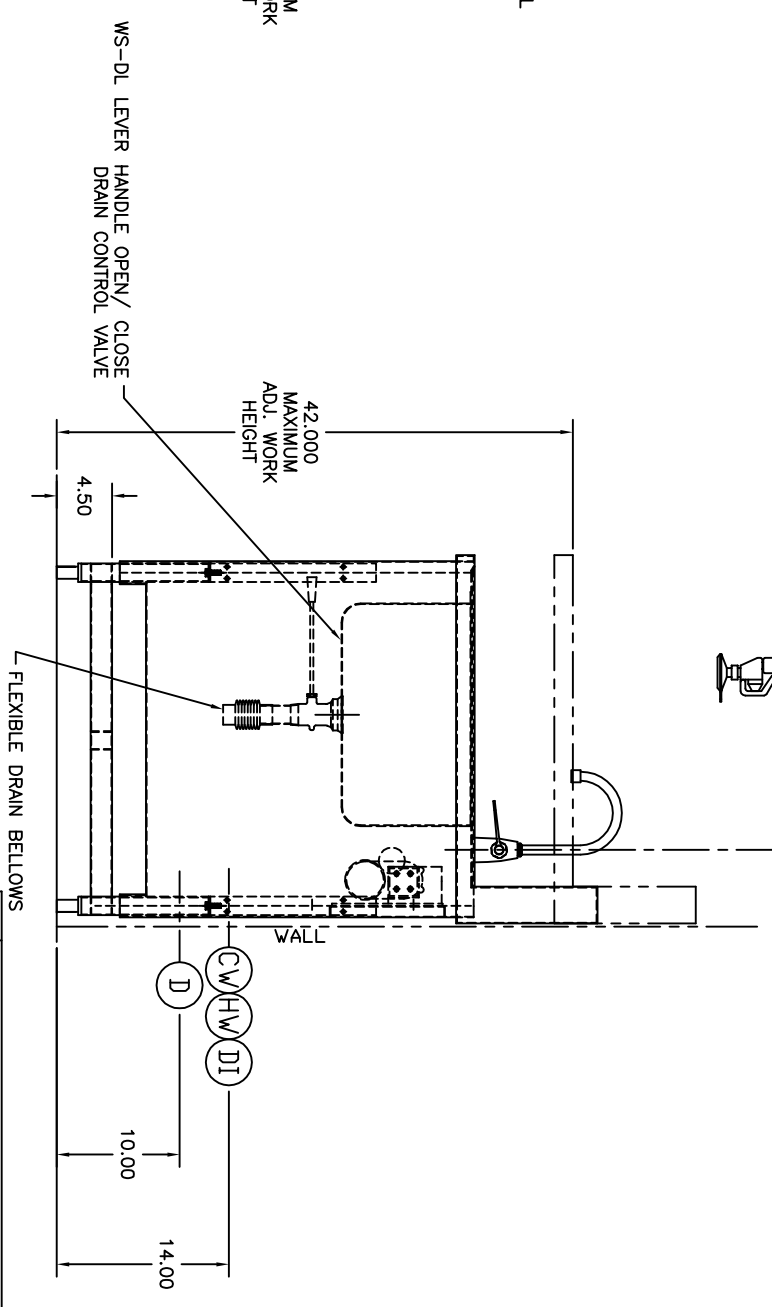
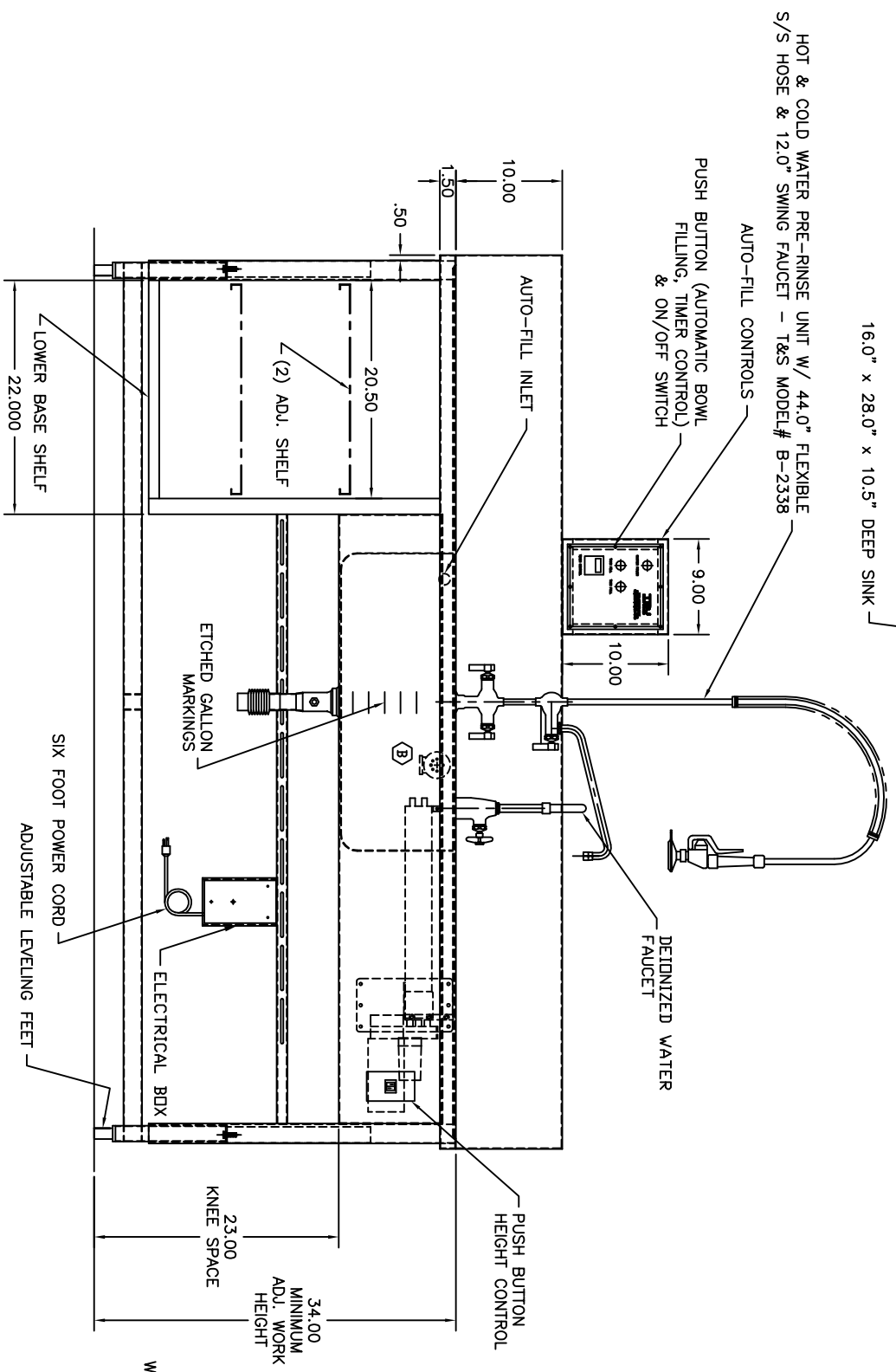
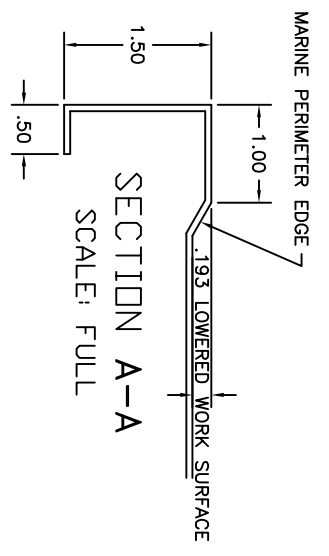
ONE (1) SET OF APPROVAL PRINTS MUST BE SIGNED AND RETURNED TO TRJ INC. BEFORE EQUIPMENT CAN BE RELEASED FOR PRODUCTION

APPROVED AS DRAWN FOR FABRICATION

NOT APPROVED — REVISE & RESUBMIT FOR FINAL APPROVAL

SIGNED _____

DATE _____



NOTES: 1) MAX. OVERALL DIMENSIONS MUST BE CONSIDERED FOR BUILDING ENTRY.
 2) ETCHED GALLON MARKINGS ON ALL SINKS

UNLESS OTHERWISE SPECIFIED		TOLERANCES IN INCHES:	
FRACTIONAL ± 1/32		ANGULAR ± .025°	
ONE DECIMAL ± 0.063		TWO DECIMAL ± 0.031	
THREE DECIMAL ± 0.015			
PROJ. RELEASE	SMH	3/23/16	
APPR. RELEASE	JD	12/22/15	
REVISED BY	JD	12/22/15	
ENG APPR.			
REF DWG - R13061		DATE	12-21-15
30-84-1B WS-AH WDRK SINK		DRAWN BY SMH	
ROUGH-IN ASSEMBLY		R15223	

REVISION	BY	DATE
A	SMH	3/22/16
B	SMH	3/31/16