

# TBJ Model 25-94-2B-AH SPCS Scope Pre-Cleaning Sink (ref. dwg. R15141)



## Product Specification

### Product Description

The TBJ Model 25-94-2B SPCS work sink is specifically designed for use in GI Labs and Sterile Processing Departments for the pre-cleaning of flexible endoscopes. The unit includes two sink bowls thus meeting AAMI guidelines for having a minimum of two separate sink basins.....one for manual cleaning and leak testing and one for rinsing of scopes. The work sink shall have the following configuration and features:

- Two 28" x 16" x 10 1/2" deep sink bowls
- (2) deck mounted hot/cold faucet with wrist blade handles shall be located between sinks.
- The sink top shall be 36" above the finished floor. The OPTIONAL ergonomic, electrically operated hydraulic lift system allowing the sink height to be adjusted from 32" to 40" high via a rocker switch control can be added to the base unit.
- An OPTIONAL deck mounted cold water spray pistol is and air pistol is included
- An OPTIONAL set of (8) tips for the water and air pistol is included.
- Two level handle drain controls for remote sink draining
- Full length, 12" wide undershelf below sink top for storage

### Construction/Design

- Heavy duty stainless steel construction
- Type 304 stainless steel sink top, 14 gauge, #4 finish
- Type 304 stainless steel tubular base frame made of 1 1/2" square x 16 gauge wall tubing
- Adjustable leveling feet
- Seamless heliarc welded construction
- All exposed welds ground and polished
- 4" high backsplash extending the length of the sink top
- NSF approved 14 gauge sink bowls with cove corners
- 1/8" high marine edge on around front and sides
- Hospital grade, chrome plated brass faucets and fixtures
- Lever handle drain controls
- Sink bowl sizes and overall dimensions can be customized around your specific needs.
- A wide variety of optional features are available to add to the base unit. See partial list of optional features listed below.



### Dimensions:

The 25-94-2B is 25" Wide x 94" Long x 36" high sink top. The OPTIONAL ergonomic height adjustment feature allows the sink top to be adjustable between 32" and 40" High. The sink bowls are 28" Wide x 16" Long x 10 1/2" deep and includes lever handle drain controls.

### Sink Fixtures

**Hot/Cold water faucets** – (2) chrome plated, deck mounted hot/cold water faucet with wrist blade handles. Fixtures are pre-piped to threaded valves for ease of connection to building utilities on site.

**Optional Deck Mounted Water Pistol**– (1) Deck mounted water pistol unit with 8' retractable hose pre-piped to threaded valves for ease of connection to building utilities on site is included.

**Optional Deck Mounted Air Pistol**– (1) Deck mounted water pistol unit with 8' retractable hose pre-piped to threaded valves for ease of connection to building utilities on site is included

### ELECTRICAL

The sink unit is completely pre-wired to an integral breaker box with a 6-foot hospital grade plug.

### Installation and Assembly

TBJ work sinks are shipped fully assembled, for quick and easy setup. Standard and optional fixtures are shipped installed and ready for use after installation of the sink. Fixtures are pre-piped ready for connection to in-house utilities on site.

## WORK SINK OPTIONS



Push-Button  
Height Adjustment



Selecta Air &  
Water Pistols



Etched Gallon  
Markings



Integrated Scope Buddy™  
Plus Flushing Aid



Hot/Cold spray rinse  
Faucet combination



Custom Sink Bowl Sizes



Built-in Cabinets  
and Drawers



Custom back-splashes and  
Side-splashes

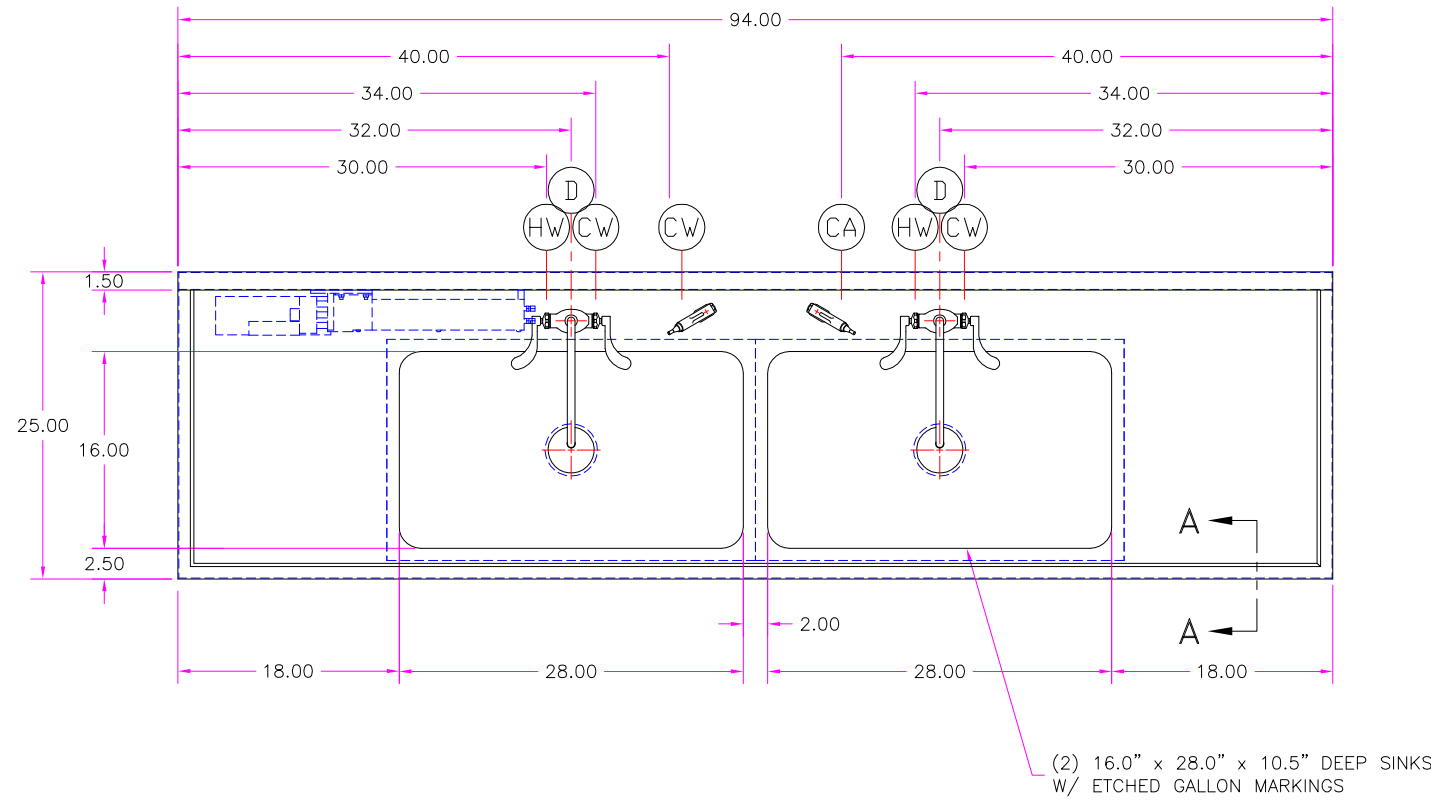


Full width under shelf



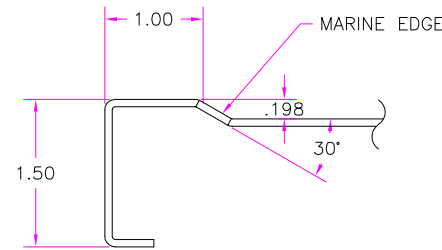
DI and RO water

**ADDITIONAL OPTIONS NOT SHOWN: Automatic push-button sink filling, Overhead canopy with LED lighting and storage bins, LED task lighting, Water temperature monitoring, Programmable enzymatic dosing, Integrated leak testing.**



UTILITY REQUIREMENTS

- (CW) — COLD WATER — (3) @ 3/4" NPT (FLEX LINE BY OTHERS)
- (HW) — HOT WATER — (2) @ 1/2" NPT (FLEX LINE BY OTHERS)
- (D) — DRAIN — (2) @ 1-1/2" NPT
- (CA) — LABORATORY COMPRESSED AIR — 3/4" NPT (FLEX LINE BY OTHERS)
- (E) — ELECTRICAL — 115 V., 1 PH., 60 Hz., 15 AMP  
(FOR 3-PRONG GROUNDED PLUG)



SECTION A-A  
SCALE: FULL

**FOR APPROVAL ONLY**

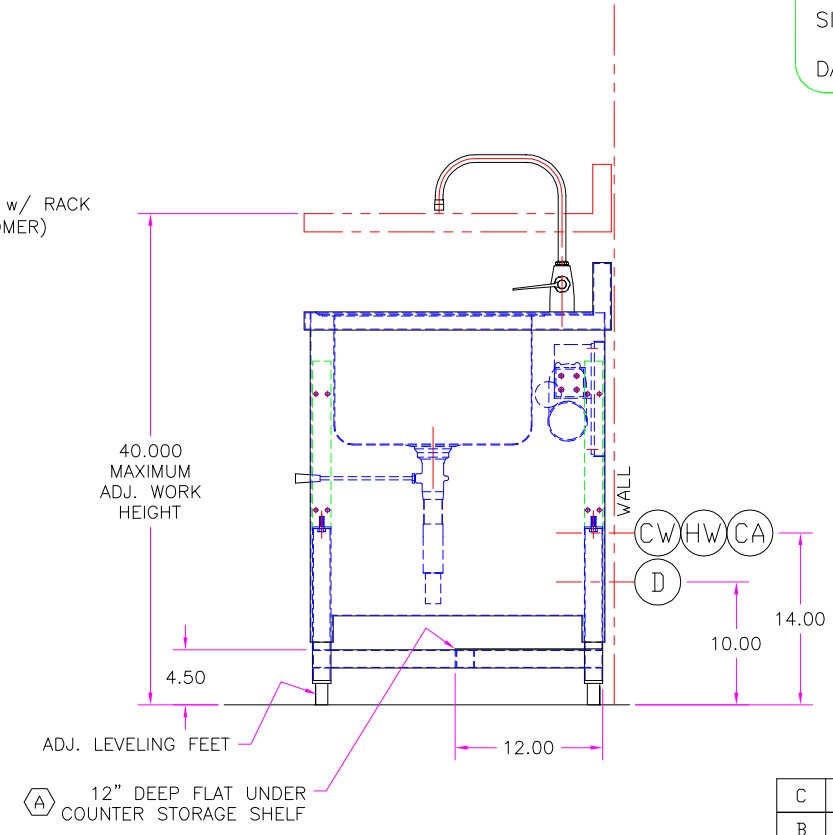
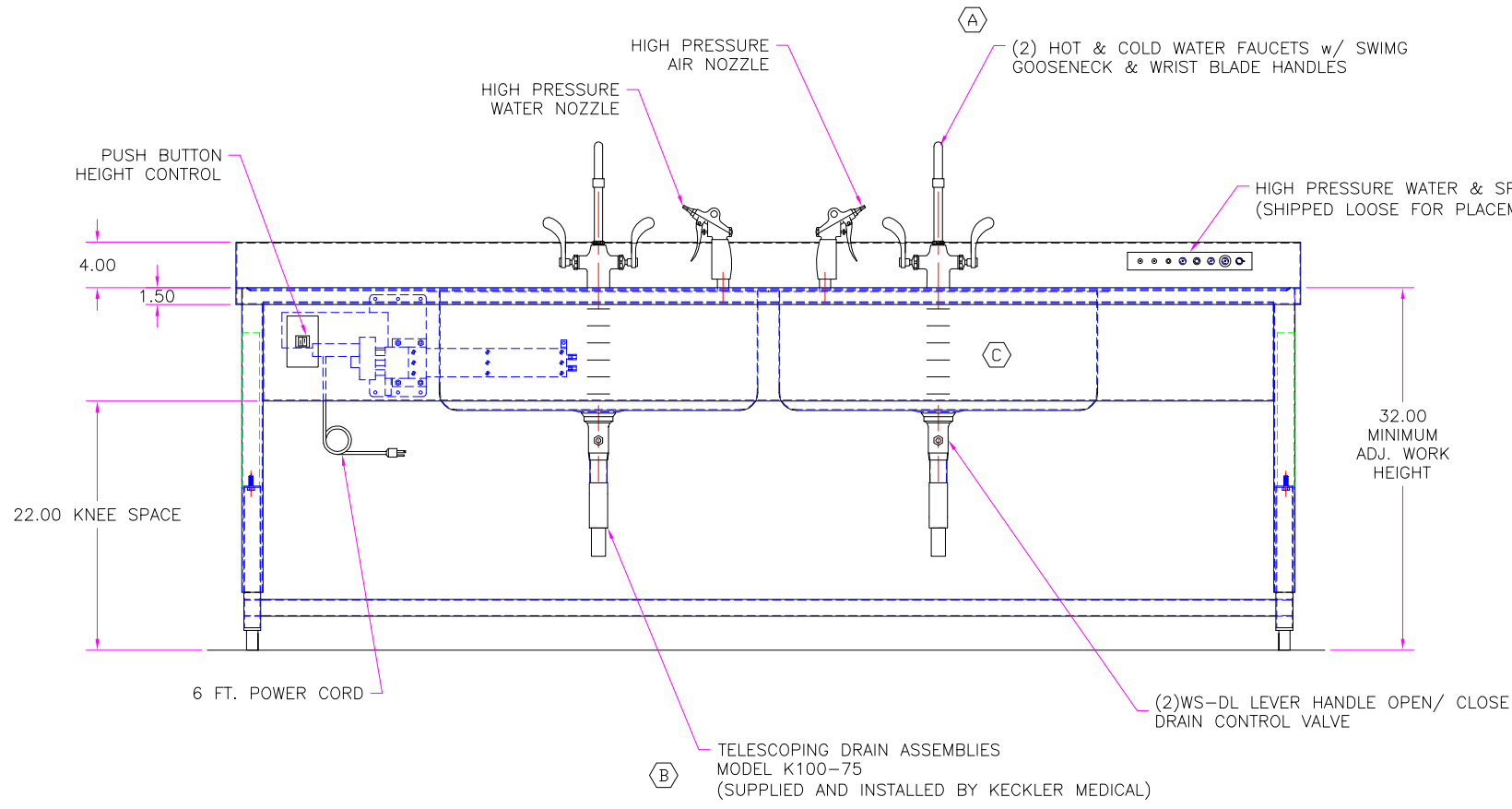
ONE (1) SET OF APPROVAL PRINTS  
MUST BE SIGNED AND RETURNED TO  
TBJ INC. BEFORE EQUIPMENT  
CAN BE RELEASED FOR PRODUCTION

APPROVED AS DRAWN  
FOR FABRICATION

NOT APPROVED — REVISE &  
RESUBMIT FOR FINAL APPROVAL

SIGNED \_\_\_\_\_

DATE \_\_\_\_\_



NOTES: 1) MAX. OVERALL DIMENSIONS MUST BE  
CONSIDERED FOR BUILDING ENTRY.

UNLESS OTHERWISE SPECIFIED TOLERANCES IN INCHES: FRACTIONAL ± 1/32 ANGULAR ± 0°25' ONE DECIMAL ± 0.063 TWO DECIMAL ± 0.031 THREE DECIMAL ± 0.015	C	ADDED ETCHED GALLON MARKINGS TO SINKS	JTM	1-13-16
	B	ADDED TELESCOPING DRAIN ASSEMBLIES	JTM	9-16-15
	A	ADDED 2ND FAUCET AND A STORGAE SHELF	ALE	8-11-15
	LET	REVISION	BY	DATE
PRODD. RELEASE - - APPR. RELEASE - - REVIEWED BY - - ENG APPR. - -	SCALE 1-1/2"=1'-0"		DRAWN BY ALE	
	REF DWG - R12247		DATE 8-10-15	
1671 ORCHARD DRIVE CHAMBERSBURG, PA 17201 Phone: (717) 261-9700 www.tbjinc.com				
MODEL 25-94-2B WS-AH - WORK SINK				
ROUGH-IN ASSEMBLY				R15141