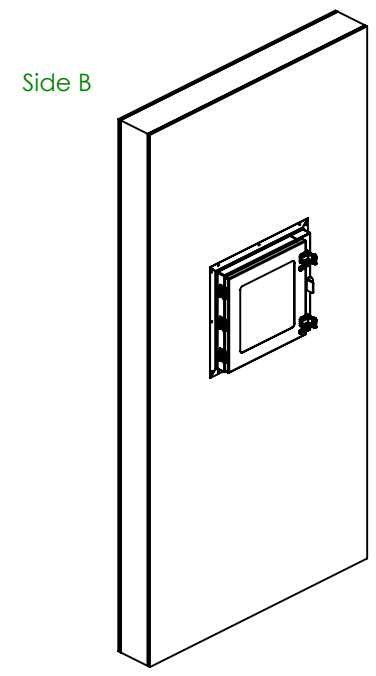
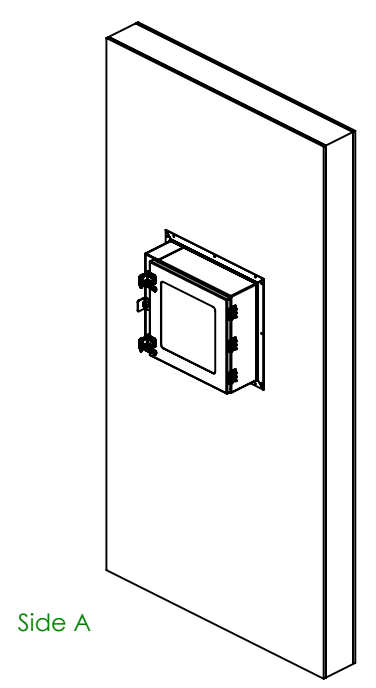
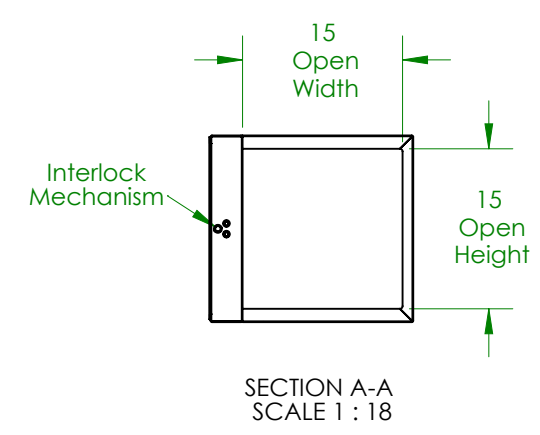
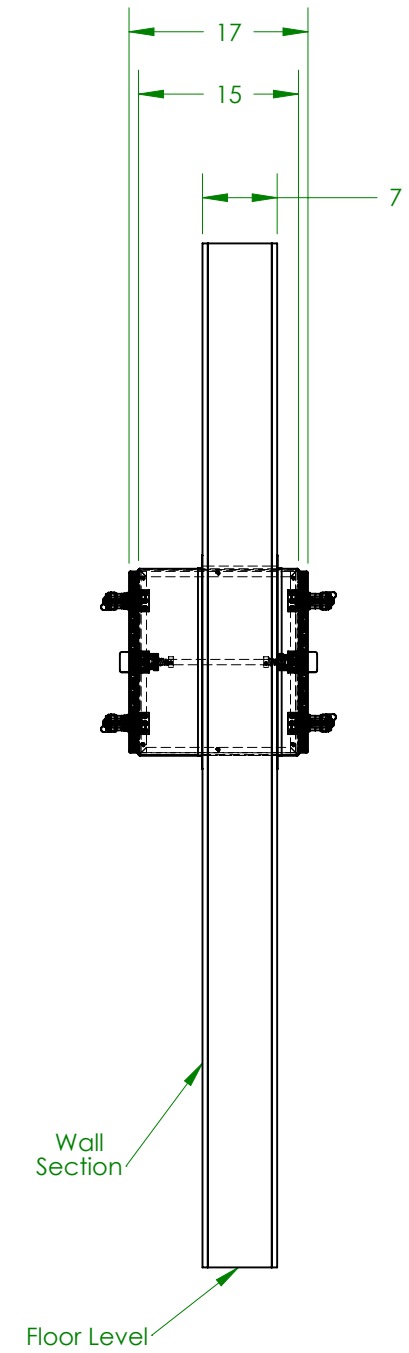
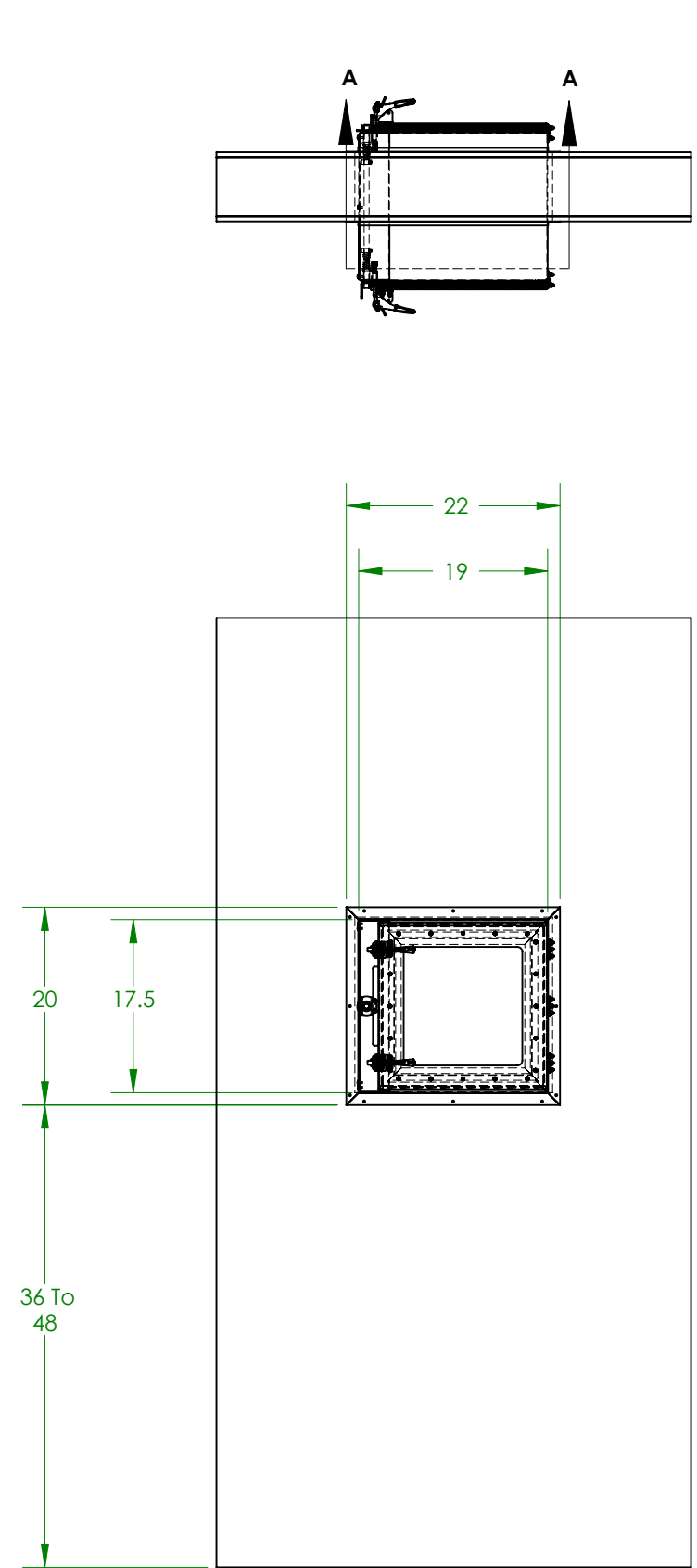


This print is the property of TBJ Incorporated.
The information contained herein is confidential,
it is not transferable. It is furnished with the clear
understanding that it is not to be traced, reproduced
or used in any process of manufacturing without
written permission from the owner and is returnable
upon request. Any infringement upon the patent
rights shown herein, whether in whole or part, will
be severely prosecuted.

TBJ Inc. 1671 Orchard Drive, Chambersburg, PA 17201 phone 717-261-9700 www.tbjinc.com CONFIDENTIAL DOCUMENT			
Pass Thru Cabinet PT15-15-15			
Material:			
SIZE	PART NO.	REV.	
B	PT 15-15-15_0000-0	#	
SCALE:	WEIGHT: 60.82	SHEET 1 OF 2	



CONSTRUCTION NOTES

- Cut hole thru the wall 17-3/4" high and 20" wide
- Install Pass Thru thru the wall
- Reseal wall opening as required
- Install trim angles
- Pass Thru Cabinet may be inverted to change direction of door swing

APPROVED

Print Name:

Date:

Signature:

This print is the property of TBJ Incorporated. The information contained herein is confidential, it is not transferable. It is furnished with the clear understanding that it is not to be traced, reproduced or used in any process of manufacturing without written permission from the owner and is returnable upon request. Any infringement upon the patent rights shown herein, whether in whole or part, will be severely prosecuted.

REVISIONS				SCALE:	WEIGHT:	SHEET 2 OF 2
LTR	DESCRIPTION	DATE	BY			
B	PT 15-15-15_0000-0					

TBJ Inc.
1671 Orchard Drive, Chambersburg, PA 17201
phone 717-261-9700 www.tbjinc.com
CONFIDENTIAL DOCUMENT

Pass Thru Cabinet Installation
Pass Thru
PT 15-15-15

Material:

SIZE	PART NO.	REV.
B	PT 15-15-15_0000-0	#