

TBJ Mobile Workstation Combinations (ref. dwg. numbers below)

Description:

TBJ Mobile Workstation Combinations are designed to provide a workstation that includes a both a spacious stainless steel work surface area and abundant storage space for instruments, tools and miscellaneous items. Seven different lower base cabinet options allow you to customize your mobile workstation around your specific needs. Three standard sizes are available and custom sizes are available upon request.

Standard Design and Construction:

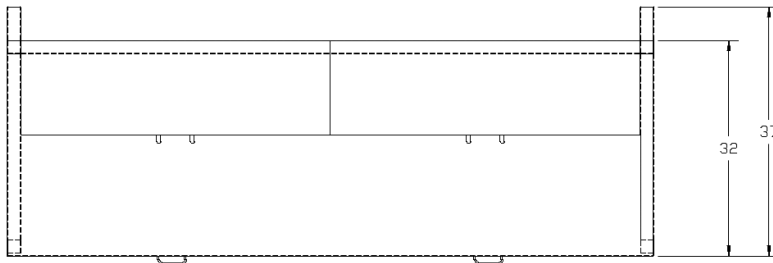
The MWS-8 shall have overall dimensions of 96" wide x 37" deep x 78" high (ref. dwg. R96127).

The MWS-7 shall have overall dimensions of 84" wide x 37" deep x 78" high (ref. dwg. R97064).

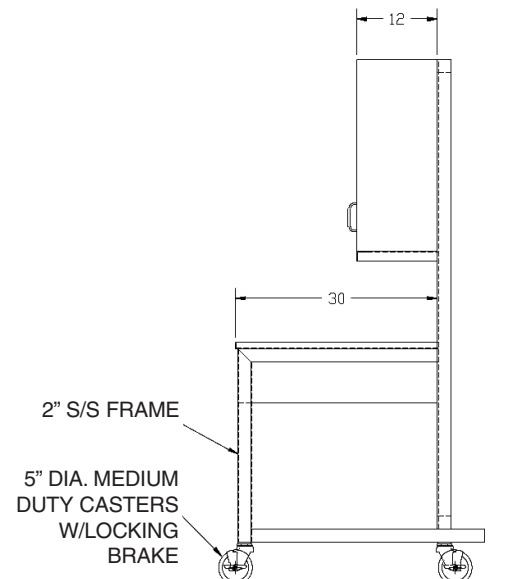
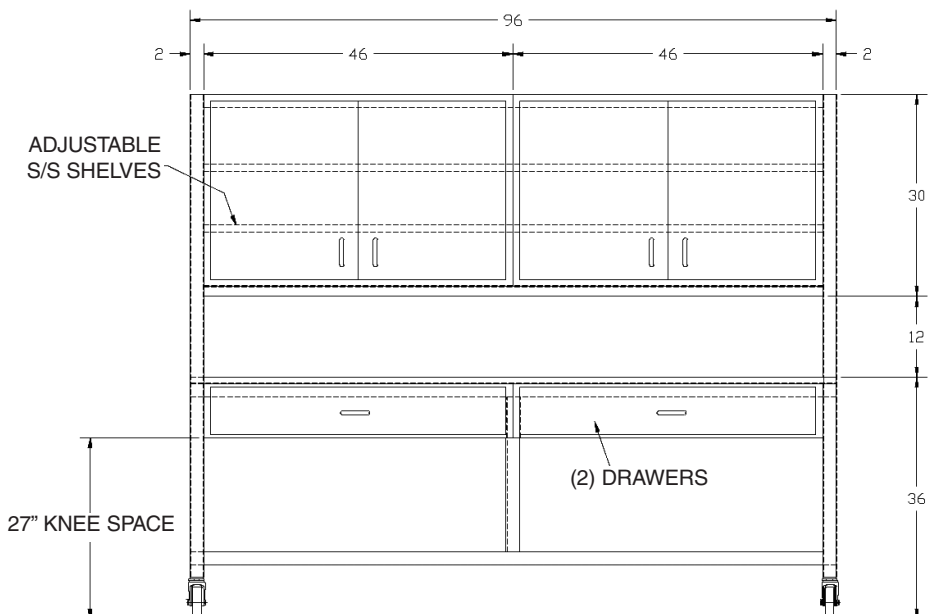
The MWS-4 shall have overall dimensions of 48" wide x 37" deep x 78" high (ref. dwg. R97065).

The Removable Storage Units shall have overall dimensions of 36" wide x 24" deep x 22" high (ref. dwg. R96126).

- All models shall utilize Type 304 14 and 16 gauge stainless steel construction.
- All welds shall be heliarc. All exposed welds shall be ground and polished.
- All models shall utilize 2" square x 16 gauge wall stainless steel tubular legs with (4) swivel casters with brakes. Casters shall be NSF approved and utilize stainless steel hardware.
- All models shall have a 30" deep work surface at 36" above the finished floor. The underside of the work surface shall be reinforced with hat channel braces to assure flatness and stability.
- All models shall include a base cabinet or cabinets beneath the work surface. Seven cabinet configurations are available to choose from. Refer to drawing R96126 for cabinet configurations.
- All cabinet configurations shall utilize all stainless steel components including drawer slides and hinges.
- All models shall have an upper storage cabinet or cabinets 12" deep. Doors shall be hinged and include stainless steel door pulls. Two adjustable stainless steel shelves shall be included.

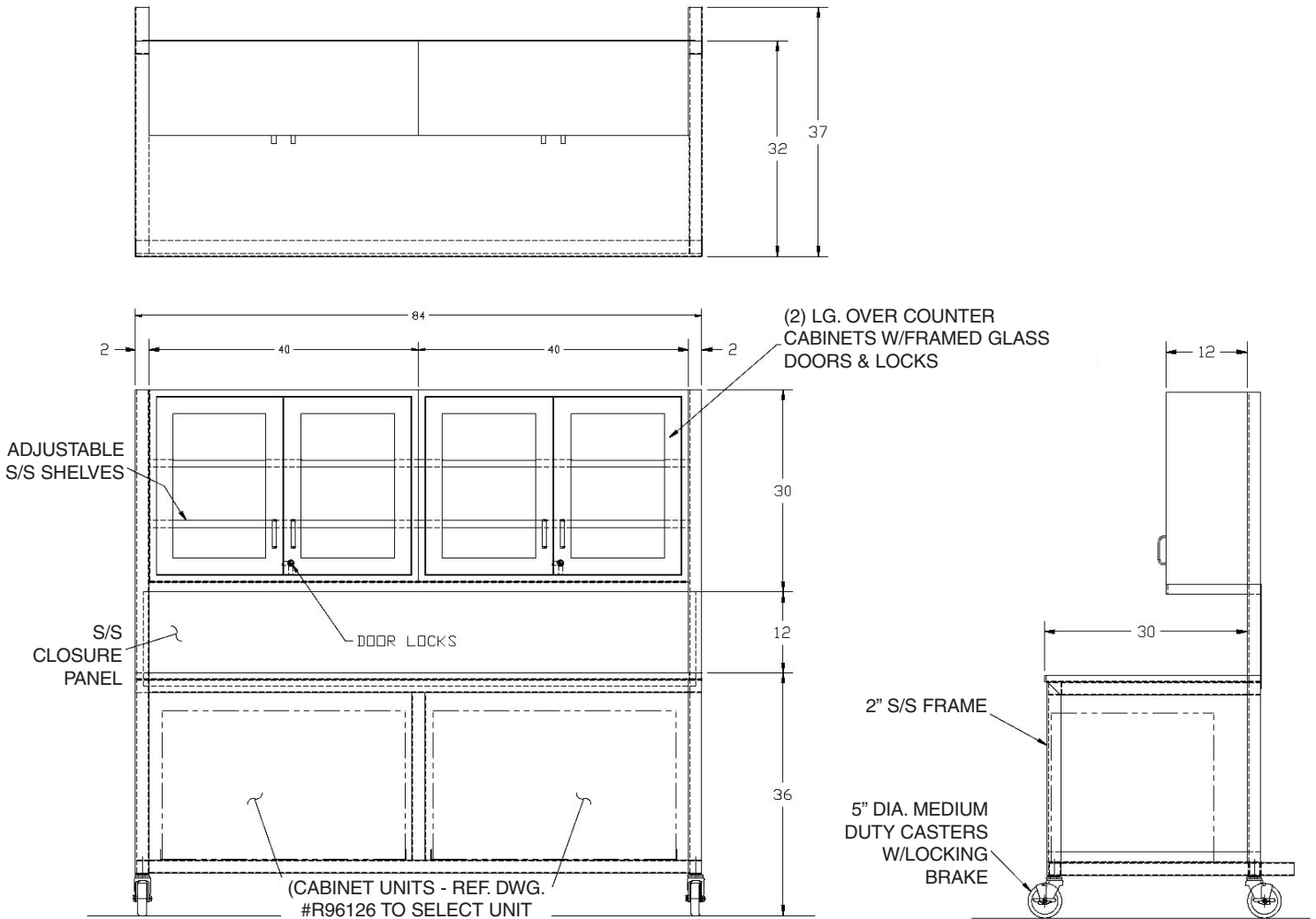


TBJ Mobile Workstation Combination - MWS-8
(ref. dwg. R96127)



This print is the property of TBJ Incorporated. The information contained herein is confidential, it is not transferable. It is furnished with the clear understanding that it is not to be traced, reproduced or used in any process of manufacturing without written permission from the owner and is returnable upon request. Any infringement upon the patent rights shown herein, whether in whole or part, will be severely prosecuted.

TBJ Mobile Workstation Combination MWS-7 (ref. dwg. R97064)



Specification and drawing are subject to change without notice unless certified by factory.

