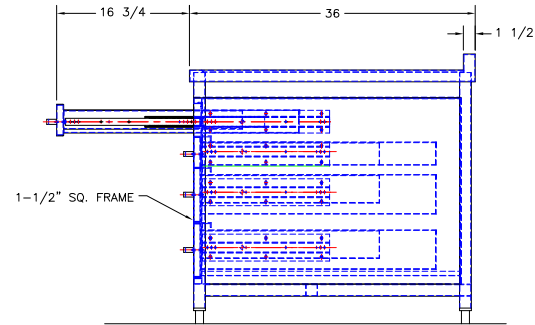
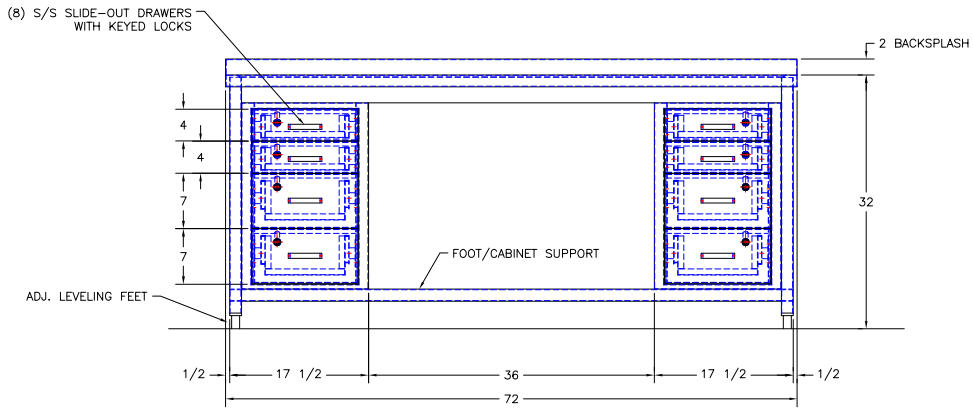


APPROVED

PRINT NAME: \_\_\_\_\_  
 DATE: \_\_\_\_\_  
 SIGNATURE: \_\_\_\_\_



This print is the property of TBJ Incorporated. The information contained herein is confidential, it is not transferable. It is furnished with the clear understanding that it is not to be traced, reproduced or used in any other process of manufacturing without written permission from the owner and is returnable upon request.

		<b>TBJ INC</b>		1671 ORCHARD DRIVE CHAMBERSBURG, PA 17201	
		SCALE 1-1/2"=1'-0"	DRAWN BY ALE		
		REF DWG - R08224	DATE 11-20-08		
		36-72 WT-C SURGERY TABLE			
A	REMOVED UPPER CABINET CANDY	ALE	12-19-08		
LET	REVISION	BY	DATE	ROUGH-IN ASSY	R08225