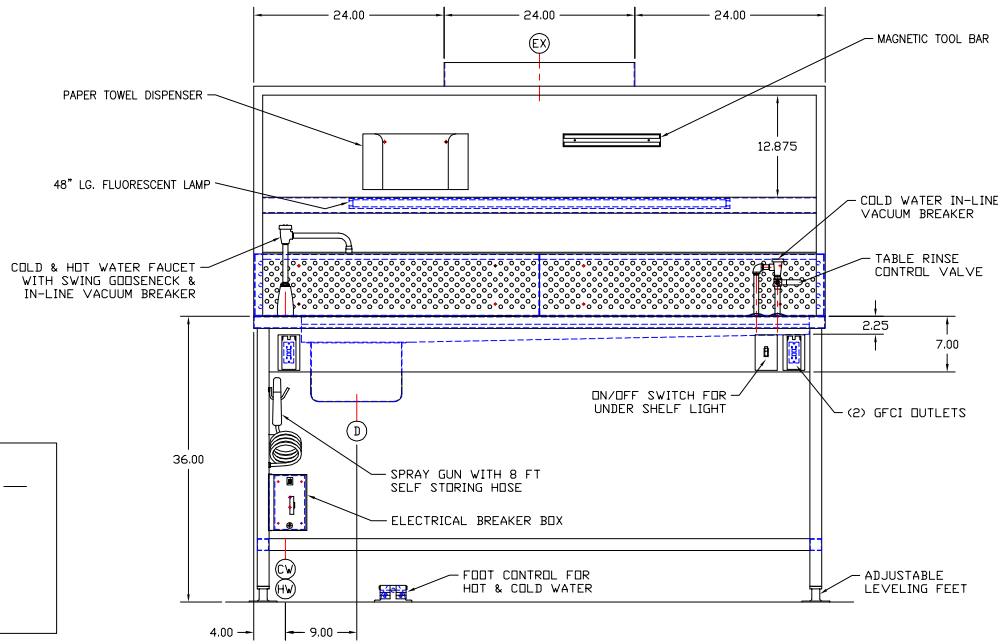
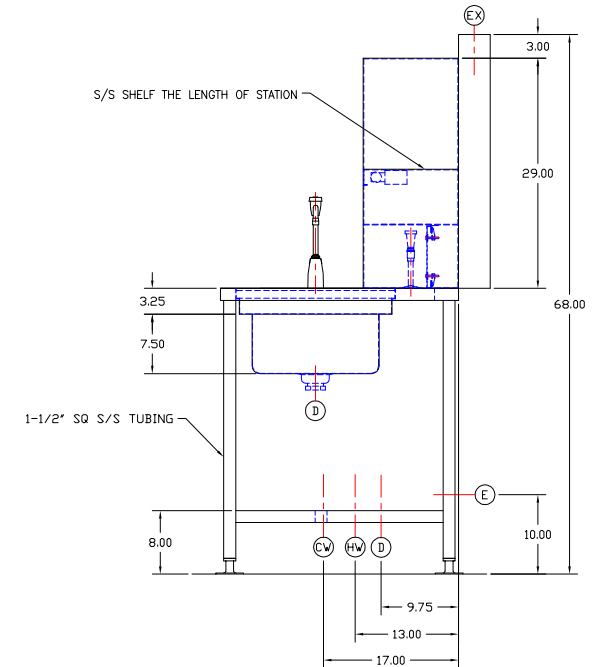


## SECTION A-A



## UTILITY REQUIREMENTS

- EX — EXHAUST — 24" x 4" OUTSIDE DIM.
- CW — COLD WATER — 3/4" NPT
- HW — HOT WATER — 1/2" NPT
- D — DRAIN — 1-1/2" NPT
- E — ELECTRICAL — 115 V., 1 PH., 60 Hz., 20 AMPS



APPROVED

PRINT NAME:  
DATE:  
SIGNATURE:

This print is the property of TBJ Incorporated. The information contained herein is confidential, it is not transferable. It is furnished with the clear understanding that it is not to be traced, reproduced or used in any other process of manufacturing without written permission from the owner and is returnable upon request. Any infringement upon the patent rights shown herein, whether in whole or part, will be severely prosecuted.

- (INCLUDED OPTIONS) —
- TABLE RINSE WITH CONTROL VALVE
  - FOOT PEDAL CONTROL FOR HOT & COLD WATER
  - 48" LONG FLUORESCENT LIGHT
  - (2) GFCI RECEPTACLE

				<b>TBJ INC</b>		1671 ORCHARD DRIVE CHAMBERSBURG, PA 17201	
				SCALE	NTS	1059-1	DRAWN BY JEG
				REF DWG	R06238		DATE 10-12-06
				MODEL 30-72 DISSECTING NECROPSY TABLE			
A	UPDATED PANEL DEPTH	JEG	12-4-06				
LET	REVISION	BY	DATE	ROUGH-IN ASSEMBLY R06252			