

TBJ Model 34-48 DD Downdraft Workstation (ref. dwg. R98048)

Description:

The TBJ Model 34-48 DD Downdraft Table is designed to provide a ventilated workstation for animal necropsies, surgeries, perfusions and dissections. The table shall function to pull air, odors, vapors and aerosols down and away from the face of personnel when connected to a negative air source. Chemicals such as formalin, alcohol and xylene are controlled and can be kept below OSHA permissible exposure limits thus providing a healthier, safer work environment.

Standard Design and Construction:

Overall table dimensions shall be 48" long x 34" wide. The work surface height shall be 36" high. The vented work surface area shall be 28" long x 40" wide.

The table shall utilize Type 316 stainless steel construction for all welded-wetted sink and drain pan components. All welds shall be heliarc. All exposed welds shall be ground to a seamless polished finish.

The table shall utilize 18 gauge T316 stainless steel removable perforated work surface panels. The panels shall be recessed 1/4" below the table perimeter to prevent fluids from escaping the work area.

The table shall utilize stainless steel, a precision engineered removable internal baffling system to create a uniform downdraft air velocity across the entire perforated work surface.

A 4" x 18" exhaust connection shall be located on the top of the table. The table shall include a manually adjustable exhaust damper for varying the air volume and downdraft velocity. NOTE: Exhaust connections can be located on the top for through-ceiling connection, on the back for through-wall connection or on the bottom for through-floor connections. Connections can also be round or rectangular.

The table drain pan shall be sloped to one end, under the exhaust plenum, for complete drainage and shall be designed for ease in cleanability to prevent build up of debris and bacteria.

The table shall utilize a control valve, vacuum breaker and (2) flush down manifolds which horizontally run the length of each side of the table, below the work surface to rinse away fluids and debris.

The table shall include a 12" x 18" shelf mounted below the duct connection stub.

The table shall be equipped with a chrome plated hot and cold laboratory faucet with vacuum breaker, swing spout and clear phenolic finish.

The table shall include a hand spray gun assembly with 8 ft. recoil hose for table clean-up.

The table shall utilize a double pedestal design which provides knee and leg room beneath the table, thus allowing the user the option of stool height seating or standing during procedures.

The table shall be factory pre-plumbed and pre-wired ready for single point connection of utilities on site.

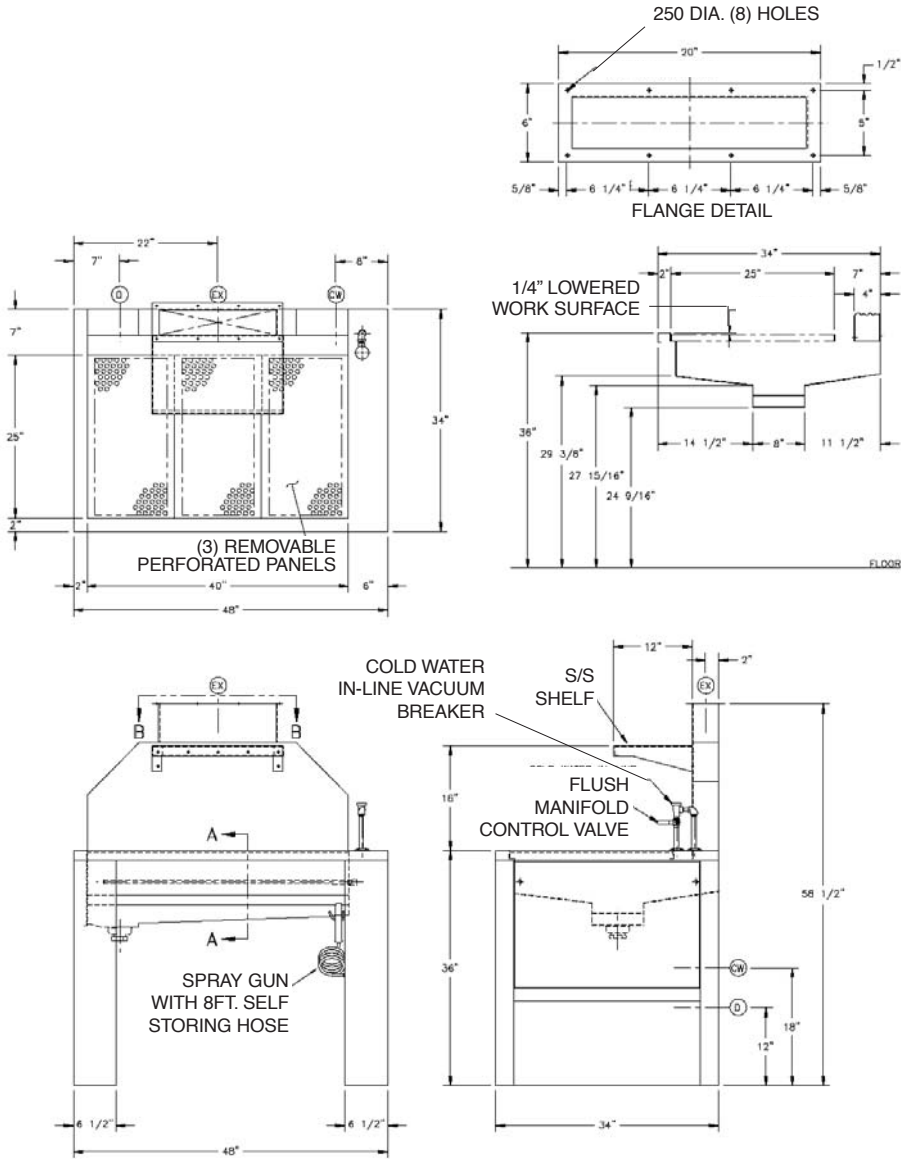
The table shall be manufactured in the United States and utilize American made components where applicable.

Options and Accessories:

(consult options brochure for more detailed information)

- Manual or electric push-button height adjustability
- Thermoplastic cutting board, 1/2" x 12" x 18"
- Ground fault circuit interrupter (GFCI) receptacle
- 1 HP heavy duty disposer
- Hydro-Aspirator system
- Eye wash hose/spray assembly
- Hand spray assembly with recoil hose
- Vacuum connection fitting
- Air connection fitting
- Gas connection fitting
- Distilled water connection fitting
- Formalin dispensing fitting with 3/8" I.D. barbed nozzle
- Detachable side shelf
- Detachable sliding instrument tray
- Adjustable arm swivel type surgical light
- Motorized adjustable damper in lieu of manual damper
- Computer data ports
- Work surface dividers
- Stainless steel sink with faucet
- Undershelf fluorescent light fixture

**TBJ Model 34-48 DD
Downdraft Workstation
(ref. dwg. R98048)**



This print is the property of TBJ Incorporated. The information contained herein is confidential, it is not transferable. It is furnished with the clear understanding that it is not to be traced, reproduced or used in any process of manufacturing without written permission from the owner and is returnable upon request. Any infringement upon the patent rights shown herein, whether in whole or part, will be severely prosecuted.

Warranty

All components are warranted to be free from defects in material and workmanship for a period of one (1) year, when used in accordance with manufacturer's instructions.

Specification and drawing are subject to change without notice unless certified by factory.

Utility Requirements

- CW** --- Cold Water - 3/4" I.P.S.
- D** --- Drain - 2" I.P.S.
- EX** --- Exhaust - 4" X 18"

TBJ
INCORPORATED

1671 Orchard Drive
Chambersburg, PA 17201
Phone: (717) 261-9700
Fax: (717) 261-1730
Email: sales@tbjinc.com
www.tbjinc.com