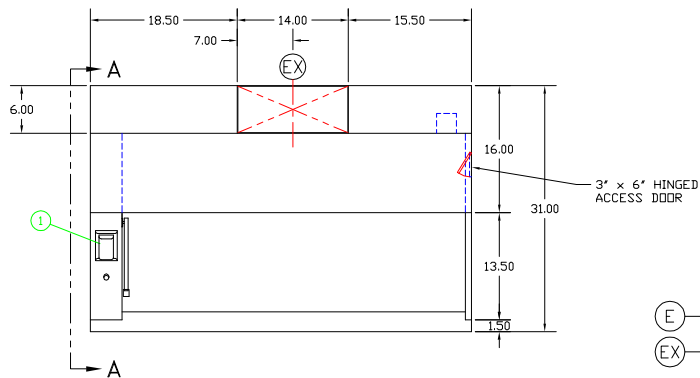
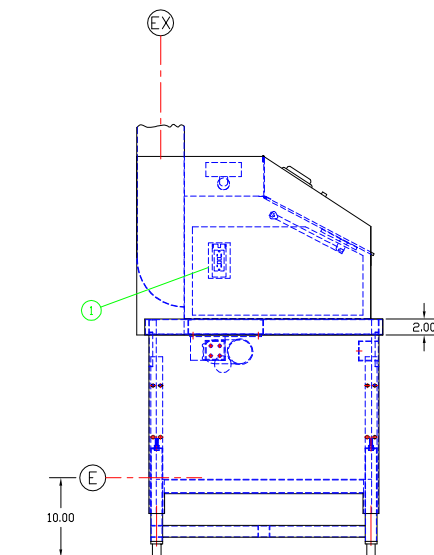


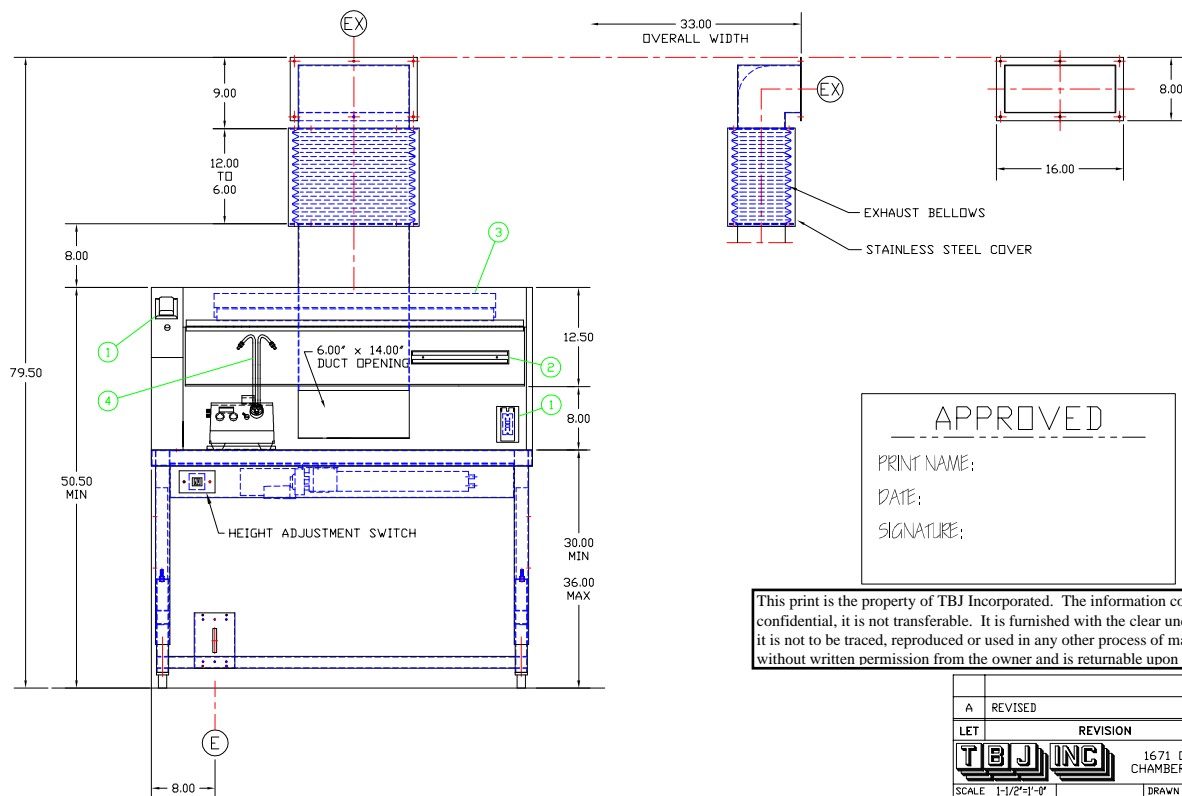
A-A VIEW



ITEM	QTY	TOT	DESCRIPTION
1	3		DUPLEX OUTLET
2	1		MAGNETIC TOOL BAR
3	1		FLUORESCANT LIGHT FIXTURE
4	1		FIBER OPTIC SURGERY LIGHT

UTILITY REQUIREMENTS

- (E) — ELECTRICAL — 115V., 1 PH., 60 Hz., 20 AMPS
 (EX) — EXHAUST — 6" X 14" CONNECTION




_ APPROVED _
 PRINT NAME:
 DATE:
 SIGNATURE:

This print is the property of TBJ Incorporated. The information contained herein is confidential, it is not transferable. It is furnished with the clear understanding that it is not to be traced, reproduced or used in any other process of manufacturing without written permission from the owner and is returnable upon request.

NOTES:

- 1) 350 CFM IS REQUIRED TO PROVIDE 100 FPM CAPTURE VELOCITY ACROSS WORK OPENING.

RODENT SURGERY

A	REVISED	CWF	3-25-08
LET	REVISION	BY	DATE
		1671 ORCHARD DRIVE CHAMBERSBURG, PA 17201	
SCALE 1-1/2"=1'-0"	DRAWN BY CWF		
REF DWG - R08052	DATE 3-18-08		
31-48 AH-BD STATION			
ROUGH-IN ASSEMBLY		R08053	