

# UTILITY REQUIREMENTS

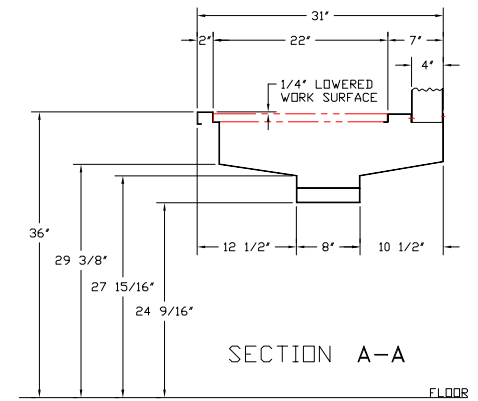
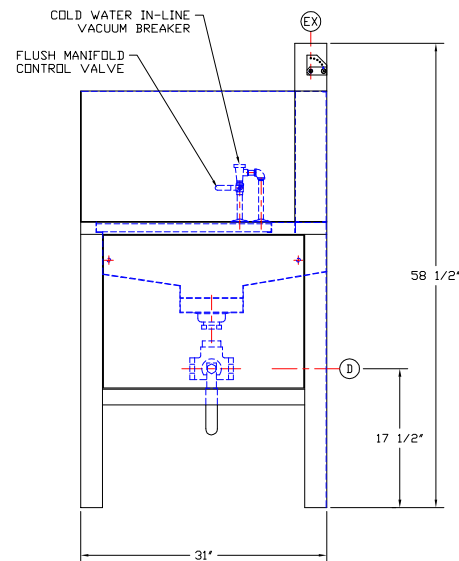
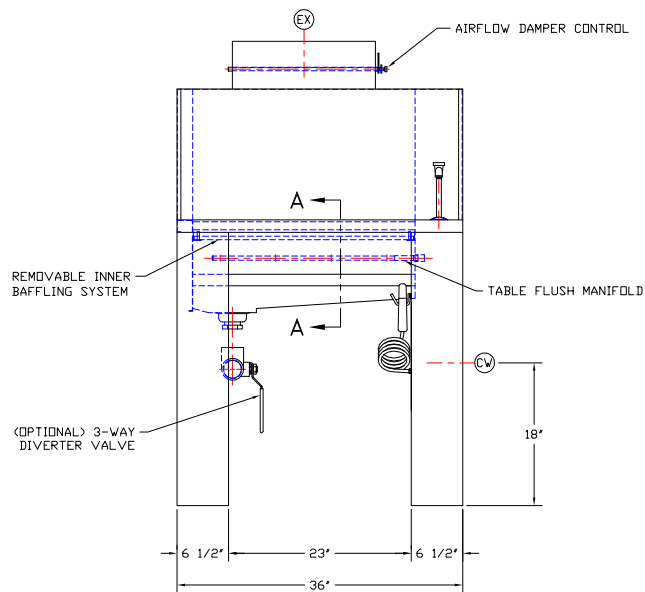
- (CW)-----COLD WATER - 3/4" I.P.S.
- (D)-----DRAIN - 1-1/2" I.P.S.
- (EX)-----EXHAUST - 4" x 18"

APPROVED

PRINT NAME:

DATE:


SIGNATURE:



SECTION A-A

FLOOR

This print is the property of TBJ Incorporated. The information contained herein is confidential, it is not transferable. It is furnished with the clear understanding that it is not to be traced, reproduced or used in any other process of manufacturing without written permission from the owner and is returnable upon request. Any infringement upon the patent rights shown herein, whether in whole or part, will be severely prosecuted.

								1671 ORCHARD DRIVE CHAMBERSBURG, PA 17001	
						SCALE NTS		DRAWN BY JEG	
						REF DWG - AP-4224		DATE 3-1-05	
								31-36 DD WORKSTATION	
A		REVISED				CWF		3-30-05	
LET		REVISION		BY		DATE		ROUGH-IN ASSEMBLY R05031	