

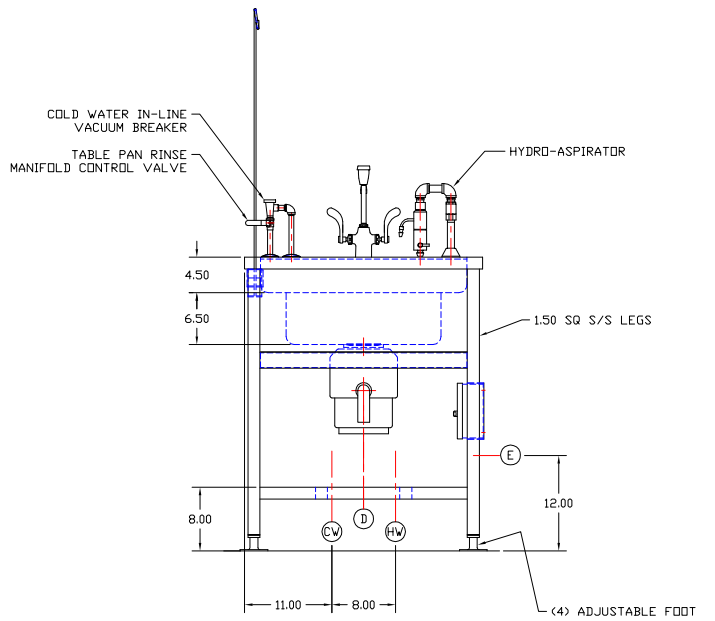
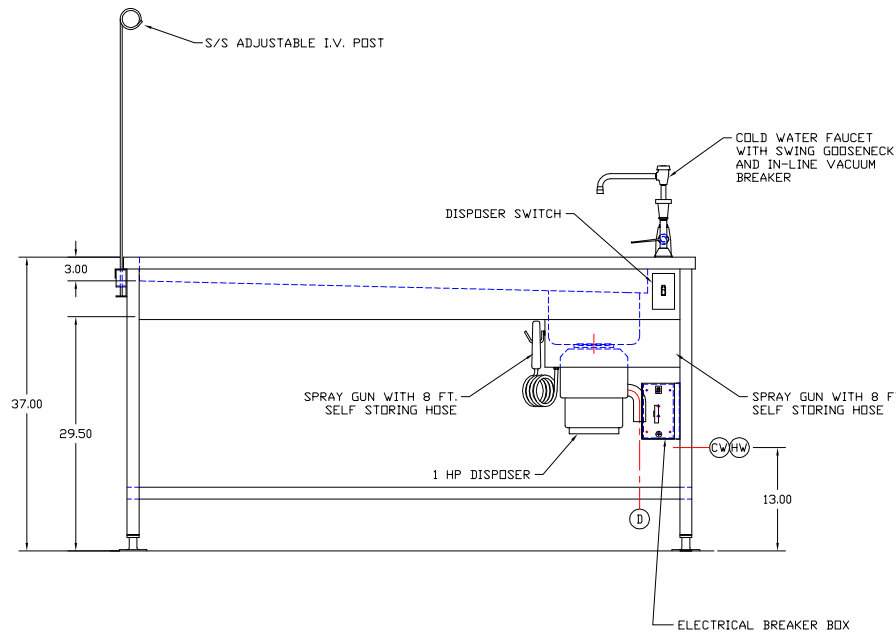
UTILITY REQUIREMENTS

- (CW) — COLD WATER — 3/4" I.P.S.
- (HW) — HOT WATER — 1/2" I.P.S.
- (D) — DRAIN — 1-1/2" I.P.S.
- (E) — ELECTRICAL — 115V., 1 PH., 60 Hz., 15 AMPS

NOTE:  
MATL- 14 GA T316 STAINLESS STEEL #4 CONSTRUCTION

APPROVED

PRINT NAME:  
DATE:  
SIGNATURE:



- (INCLUDED OPTIONS) -
- HAND SPRAY GUN WITH RECOIL HOSE
  - HYDRO-ASPIRATOR
  - 1 HP DISPOSER
  - (2) TIE DOWN BARS WITH ADJUSTABLE CLEATS
  - TABLE PAN RINSE w/CONTROL VALVE
  - S/S ADJUSTABLE I.V. POST

				<b>TBJ INC</b>		1671 ORCHARD DRIVE CHAMBERSBURG, PA 17201	
				SCALE	NITS	DRAWN BY	CWF
				REF DWG	- R06099	DATE	5-22-06
				30-72 NVNT NECROPSY TABLE			
LET	REVISION	BY	DATE	ROUGH-IN ASSEMBLY		R06131	

# TBJ Model 30 NVNT Series Dissecting/Necropsy Workstations

### Description:

The TBJ Model 30 NVNT Series Table is designed to provide a workstation for animal necropsies, surgeries, and dissections where exposure to fumes and odors is not a concern but durability and cleanability are required. The tables are available in a wide range of sizes designed to meet both light duty and heavy duty requirements. A wide variety of optional features allow you to customize the size table you select around your specific requirements.

### Standard Design and Construction:

Overall table dimensions shall range from 48" to 120" long. The standard width is 30" wide. The work surface height shall be 37" high.

The tables shall utilize Type 316 stainless steel construction for all welded-wetted sink and drain pan components. All welds shall be heliarc. All exposed welds shall be ground to a seamless polished finish.

The tables shall utilize 18 gauge T316 stainless steel removable perforated work surface panels. The panels shall be recessed 1/4" below the table perimeter to prevent fluids from escaping the work area.

The tables shall utilize a heavy duty tubular base frame design with leg supports and cross members made of 1 1/2" square stainless steel tubing with 16 gauge wall thickness. Legs shall be provided with adjustable sanitary feet for leveling.

The table drain pan shall be sloped to one end for complete drainage and shall be designed for ease in cleanability to prevent build up of debris and bacteria.

The tables shall include an integral stainless steel sink with radiused corners and a chrome plated hot and cold laboratory faucet with vacuum breaker, swing spout and clear phenolic finish.

The tables shall utilize a double pedestal design which provides knee and leg room beneath the table, thus allowing the user the option of stool height seating or standing during procedures.

The table shall be factory pre-plumbed and pre-wired ready for single point connection of utilities on site.

The table shall be manufactured in the United States and utilize American made components where applicable.

### Options and Accessories:

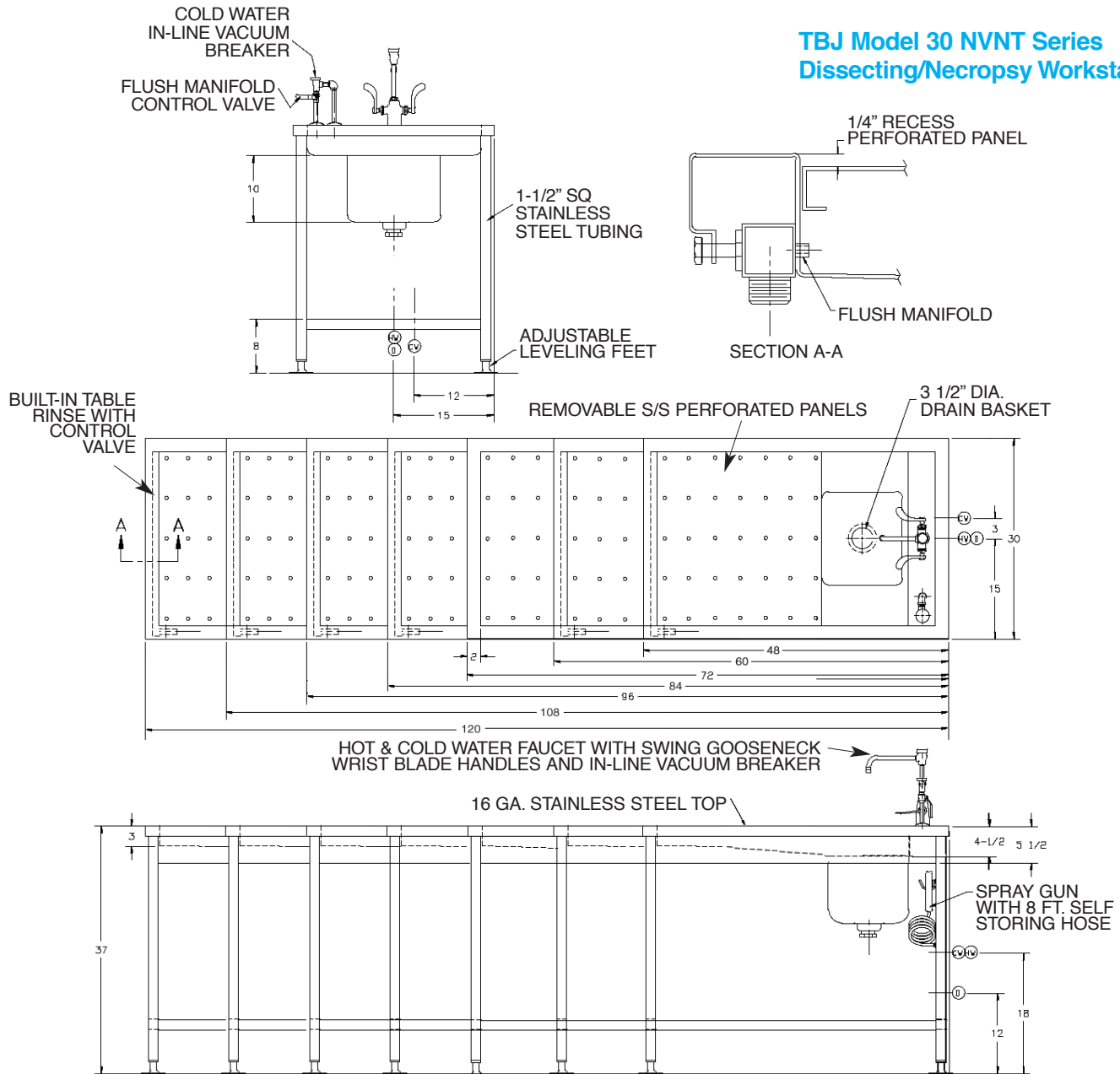
(consult options brochure for more detailed information)

- Table rinse/flush down system
- Manual or electric push-button height adjustability
- Thermoplastic cutting board, 1/2" x 12" x 18"
- Ground fault circuit interrupter (GFCI) receptacle
- 1 HP heavy duty disposer
- Hydro-Aspirator system
- Eye wash hose/spray assembly
- Hand spray assembly with recoil hose
- Vacuum connection fitting
- Air connection fitting
- Gas connection fitting
- Distilled water connection fitting
- Formalin dispensing system
- Detachable side shelf
- Detachable sliding instrument tray
- Adjustable arm swivel type surgical light
- Computer data ports

### STANDARD MODELS

LENGTH	30 SERIES MODEL
4 – FOOT	30-48 NVNT
5 – FOOT	30-60 NVNT
6 – FOOT	30-72 NVNT
7 – FOOT	30-84 NVNT
8 – FOOT	30-96 NVNT
9 – FOOT	30-108 NVNT
10 – FOOT	30-120 NVNT

**TBJ Model 30 NVNT Series  
Dissecting/Necropsy Workstations**



*Specification and drawing are subject to change without notice unless certified by factory.*

**Utility Requirements**

- HW** --- Hot Water - 1/2" I.P.S.
- CW** --- Cold Water - 3/4" I.P.S.
- D** --- Drain - 2" I.P.S.

**Warranty**

All components are warranted to be free from defects in material and workmanship for a period of one (1) year, when used in accordance with manufacturer's instructions.



1671 Orchard Drive  
Chambersburg, PA 17201  
Phone: (717) 261-9700  
Fax: (717) 261-1730  
Email: salesbj@innernet.net  
www.tbjinc.com