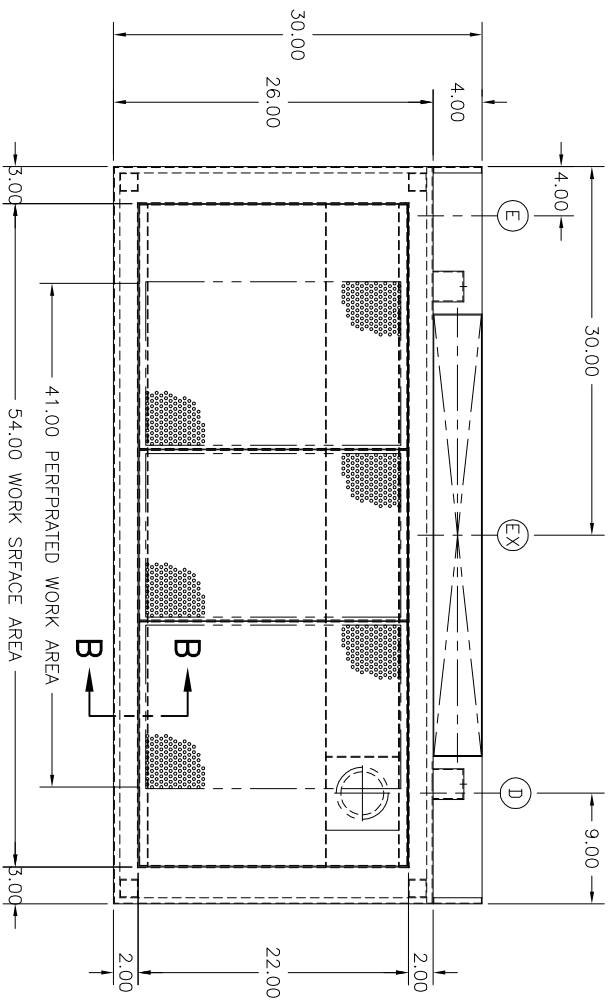


UTILITY REQUIREMENTS

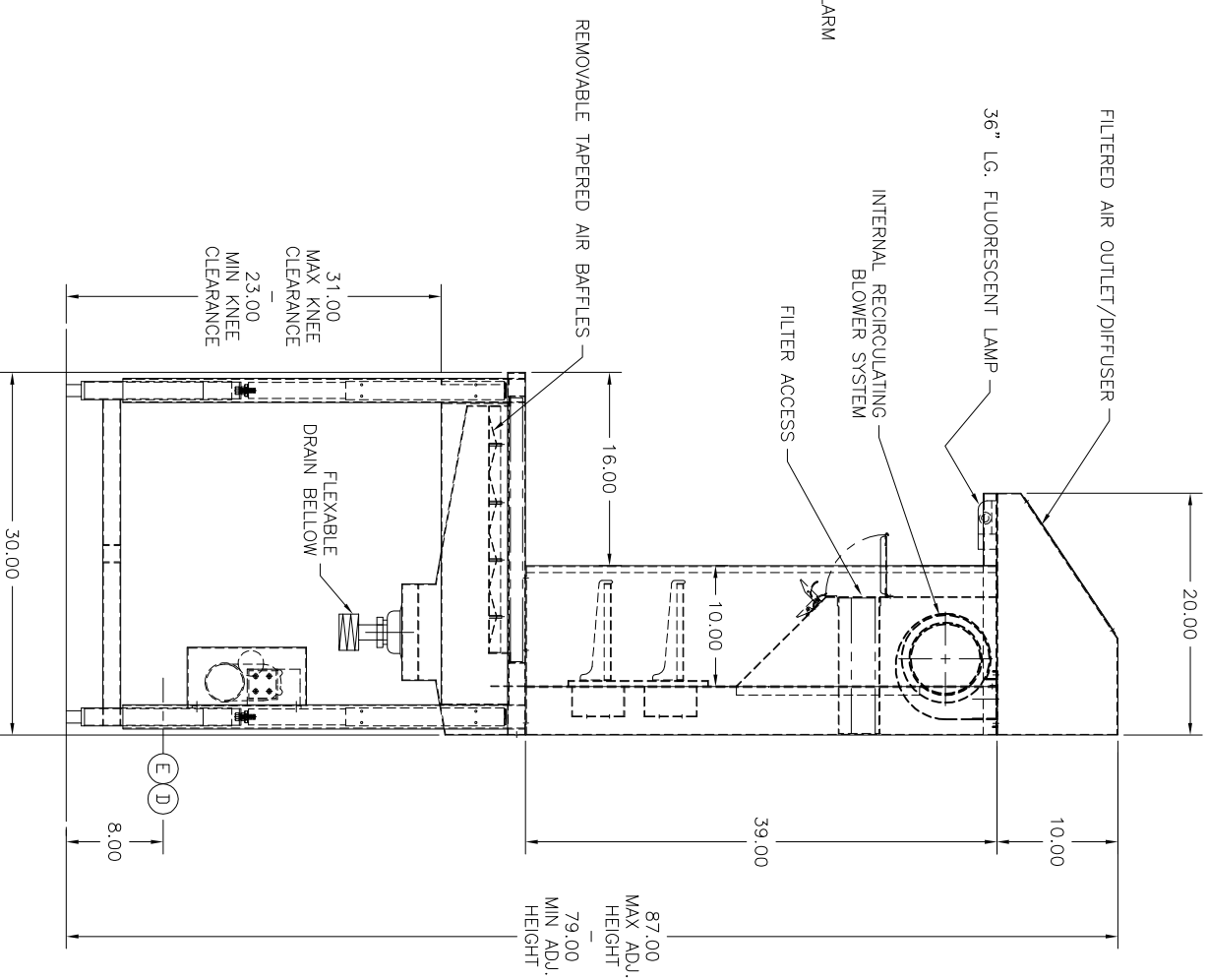
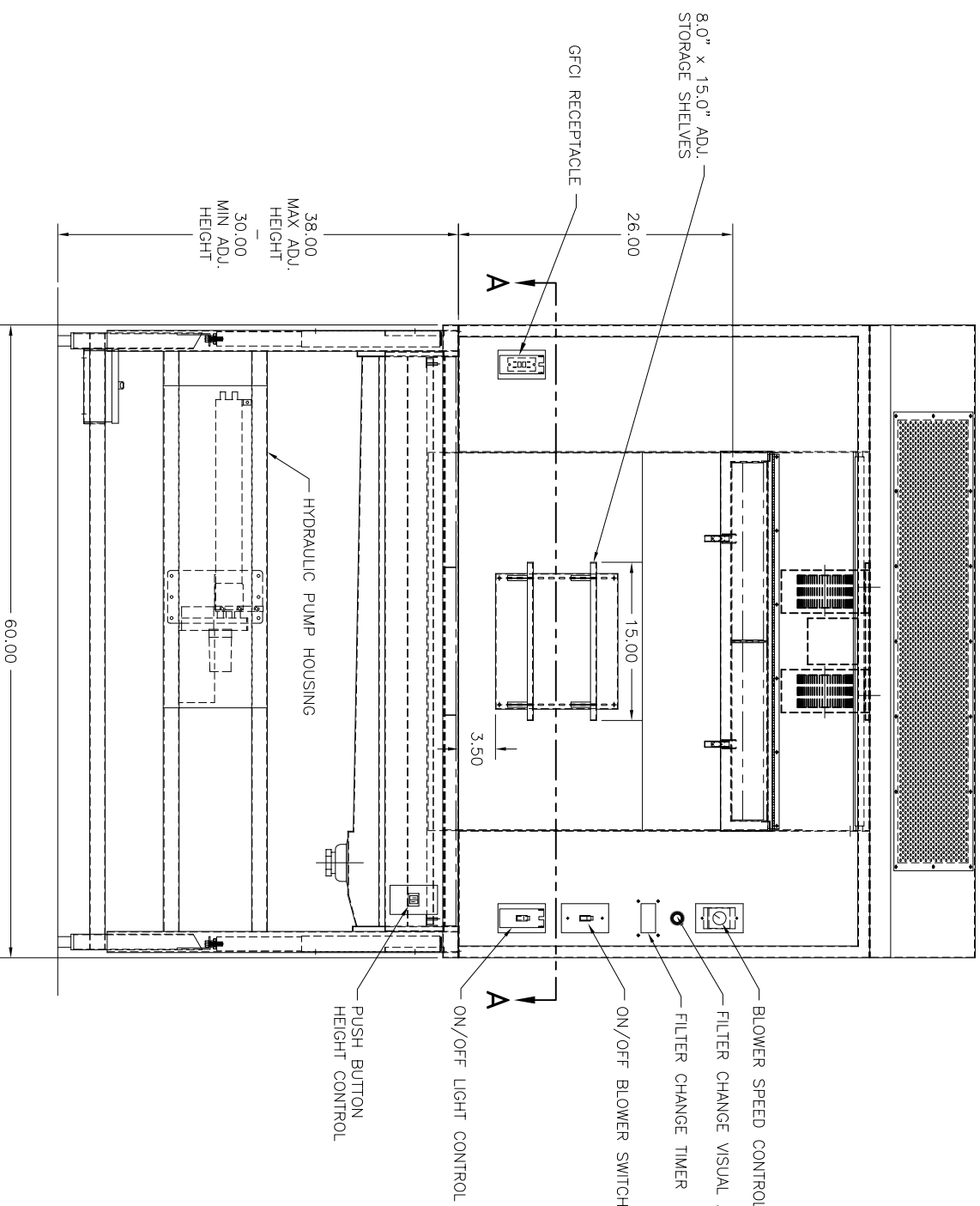
- Ⓔ — ELECTRICAL — 115 V., 1 PH., 60 Hz., 30 AMP.
- ⒺX — EXHAUST — 800 CFM MAX. SELF-CONTAINED RECIRCULATING AIR
- ⒺD — DRAIN — 1-1/2" I.P.S.

INCLUDED OPTIONS

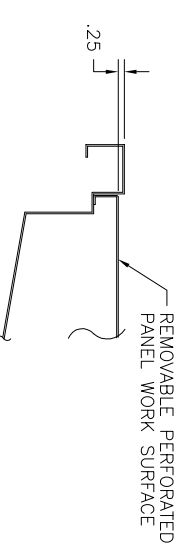
- 8" PUSH BUTTON HEIGHT ADJUSTMENT
- 36" FLUORESCENT LAMP
- BLOWER SPEED CONTROL
- (2) 8" x 15" STORAGE SHELVES
- (1) GROUND FAULT CIRCUIT INTERRUPTER



SECTION A-A



SECTION B-B
SCALE: FULL



APPROVED

 PRINT NAME:
 DATE:
 SIGNATURE:

LET	REVISION	BY	DATE
B	UPGRADE TO 8" PUSH BUTTON LIFT	NES	1-30-12
A	UPDATED FOR PRODUCTION	NES	12-20-11

TBJ
 INCORPORATED
 1671 ORCHARD DRIVE
 CHAMBERSBURG, PA 17201
 Phone: (717) 261-9700 www.tbjinc.com
 SCALE 1-1/2"=1'-0"
 REF DWG - R0775-A
 DRAWN BY: ALE
 DATE: 10-26-11
 30-60 DD - DOWNDRAFT WORK STATION
 ROUGH-IN ASSEMBLY R11187