

TBJ Model 30-60 BD Backdraft Workstation (ref. dwg. R00112)

Description:

The TBJ Model 30-60 BD Backdraft Workstation is designed to provide a ventilated workstation for gross dissection procedures, animal necropsies and surgeries, perfusions, tissue trimming and dissections. The table shall function to pull air, odors, vapors and aerosols back and away from the face of personnel when connected to a negative air source. Chemicals such as formalin, alcohol and xylene are controlled and can be kept below OSHA permissible exposure limits thus providing a healthier, safer work environment.

Standard Design and Construction:

Overall table dimensions shall be 60" wide x 34" deep. The work surface height shall be 36" high.

The table shall utilize Type 316 stainless steel construction for all welded-wetted sink and drain pan components. All welds shall be heliarc. All exposed welds shall be ground to a seamless polished finish. The main body of the table shall be comprised mainly of 14 gauge and 16 gauge prime material with a #4 finish.

The table shall utilize stainless steel backdraft plenum that includes a removable perforated exhaust panel constructed of 18 ga. T 316 stainless steel with a #4 finish to create a uniform backdraft air velocity across the entire work surface.

A 4" x 48" exhaust connection shall be located on the top of the table.

The table work surface shall be made up of (5) removable perforated panels. Beneath the removable panels is a solid stainless steel work surface sloped to a single compartment sink located on the right side of the table. The sink includes a built-in base cabinet with hinged access door with paddle latch to for easy access plumbing connections.

The table shall be equipped with a chrome plated hot and cold laboratory faucet with vacuum breaker, swing spout and clear phenolic finish.

A 1/4" edge shall be provided in front of the work surface to contain fluids.

The table shall utilize a control valve, vacuum breaker and a flush down manifold on the end of the unit to rinse the work surface area with clean tap water.

The table shall include a stainless steel hutch with shelving, magnetic instrument holder, paper towel holder, (1) GFCI outlets and a fluorescent light fixtures with ON/OFF switch.

The table shall include a hand spray gun assembly with 8 foot recoil hose for table clean-up.

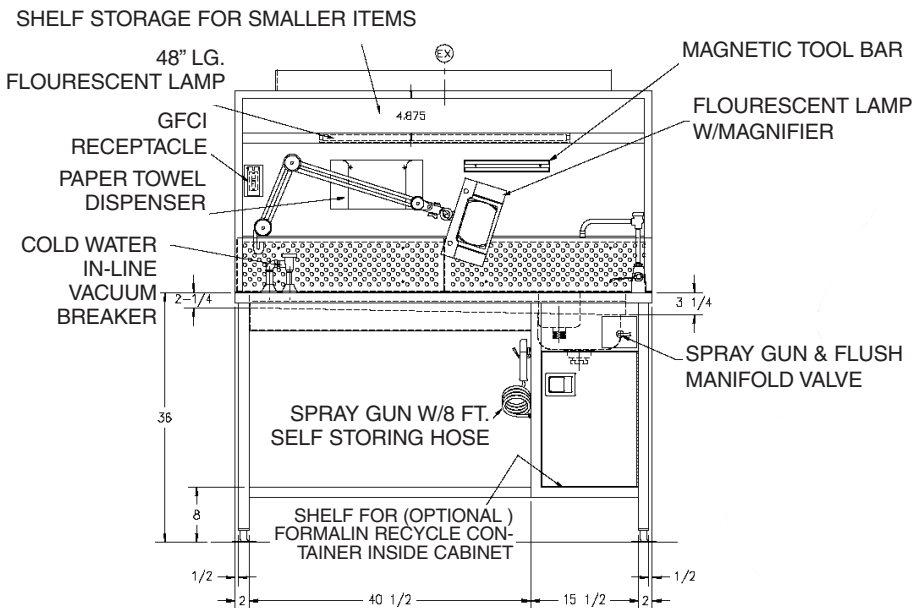
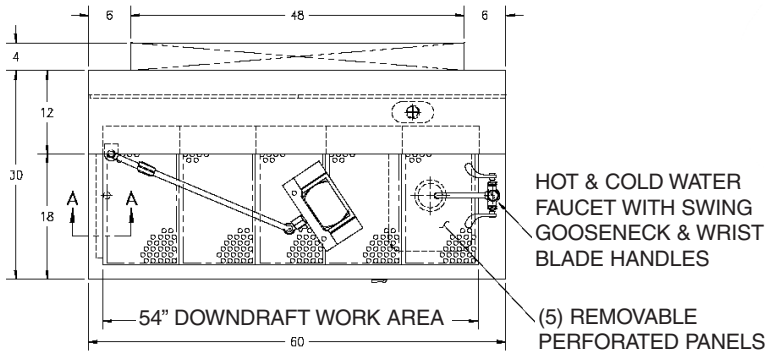
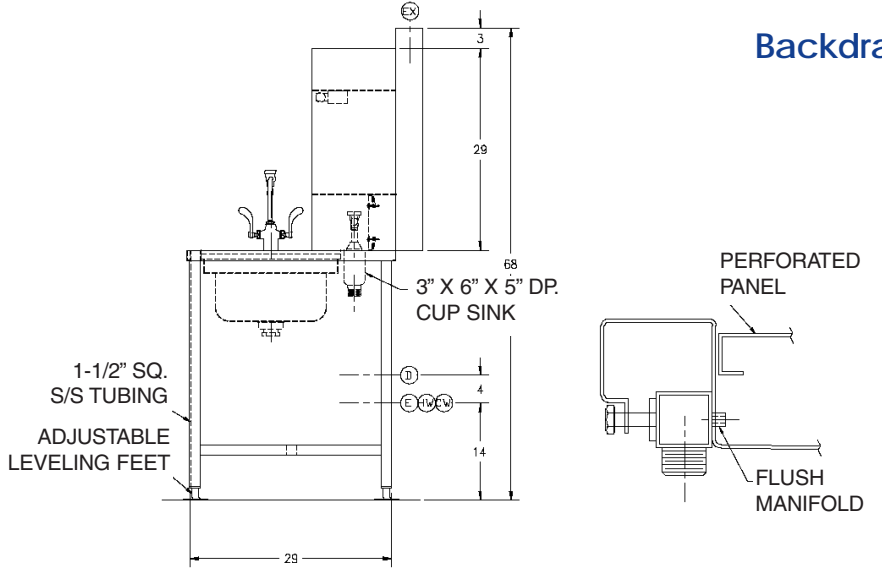
The table shall be factory pre-plumbed and pre-wired ready for single point connection of utilities on site.

Options and Accessories:

(consult options brochure for more detailed information)

- Thermoplastic cutting board, 1/2" x 12" x 18"
- Ground fault circuit interrupter (GFCI) receptacle
- (1) HP heavy duty disposer
- Eye wash hose/spray assembly
- 3.5 diopter fluorescent magnifier
- ANSI Approved deck mounted eye wash
- Elevating height adjustment
- Flexible neoprene exhaust bellows for elevating height option
- Air velocity monitor
- Integral cup sink for formalin disposal
- Formalin dispensing system with pump, holding carboy and faucet
- Halogen task lamp with magnifier
- Formalin collection carboy with quick disconnect
- Audible and visual formalin carboy "full" alarms

**TBJ Model 30-60 BD
Backdraft Workstation
(ref. dwg. R00112)**



Specification and drawing are subject to change without notice unless certified by factory.

Utility Requirements

- E** --- Electrical - 115V., 1 PH., 60 Hz., 20 AMPS
- HW** --- Hot Water - 1/2" I.P.S.
- CW** --- Cold Water - 1/2" I.P.S.
- D** --- Drain - 2" NPT FLOOR DRAIN MIN.
- EX** --- Exhaust - 4" x 48" OUTSIDE DIMS.

This print is the property of TBJ Incorporated. The information contained herein is confidential, it is not transferable. It is furnished with the clear understanding that it is not to be traced, reproduced or used in any process of manufacturing without written permission from the owner and is returnable upon request. Any infringement upon the patent rights shown herein, whether in whole or part, will be severely prosecuted.

Warranty

All components are warranted to be free from defects in material and workmanship for a period of one (1) year, when used in accordance with manufacturer's instructions.



1671 Orchard Drive
Chambersburg, PA 17201
Phone: (717) 261-9700
Fax: (717) 261-1730
Email: salestbj@innernet.net
www.tbjinc.com