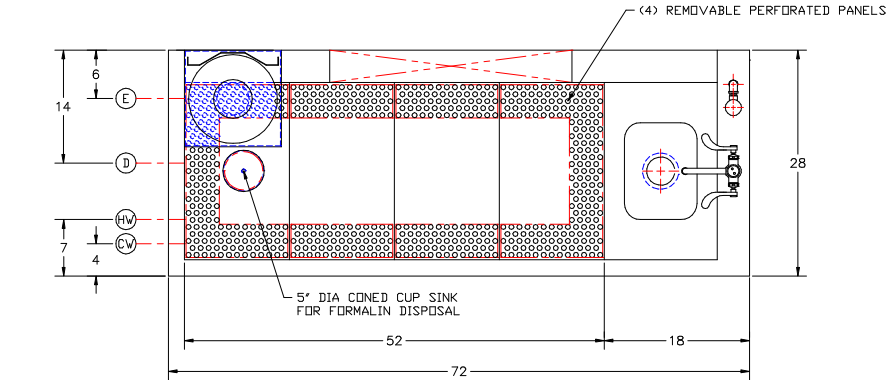


This print is the property of TBJ Incorporated. The information contained herein is confidential, it is not transferable. It is furnished with the clear understanding that it is not to be traced, reproduced or used in any process of manufacturing without written permission from the owner and is returnable upon request. Any infringement upon the patent rights shown herein, whether in whole or part, will be severely prosecuted.



UTILITY REQUIREMENTS

- E-----ELECTICAL - 115 V., 1 PH., 60 Hz. 15 AMP
- HW-----HOT WATER - 1/2" I.P.S.
- CW-----COLD WATER - 3/4" I.P.S.
- D-----DRAIN - 2" I.P.S.
- EX-----EXHAUST - 4" x 30"

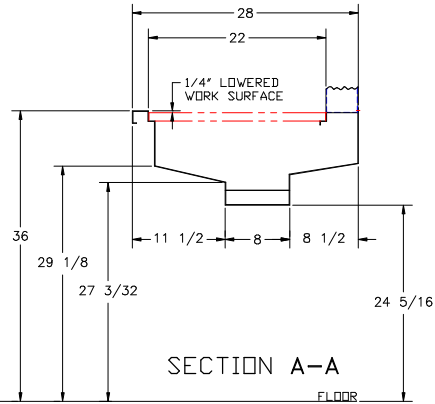
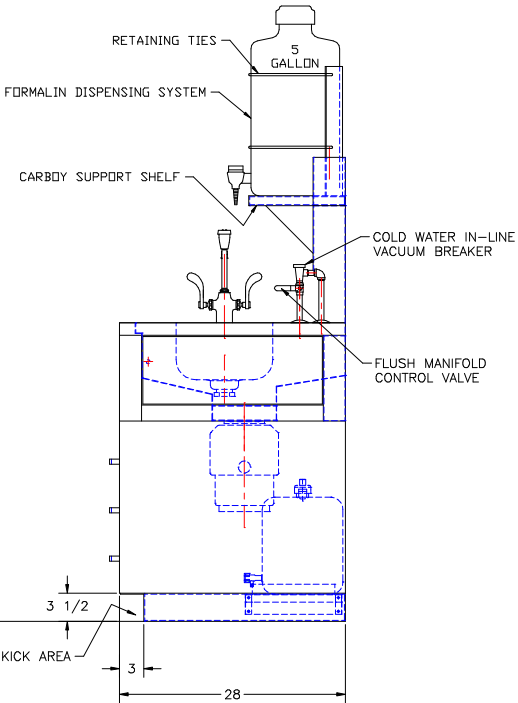
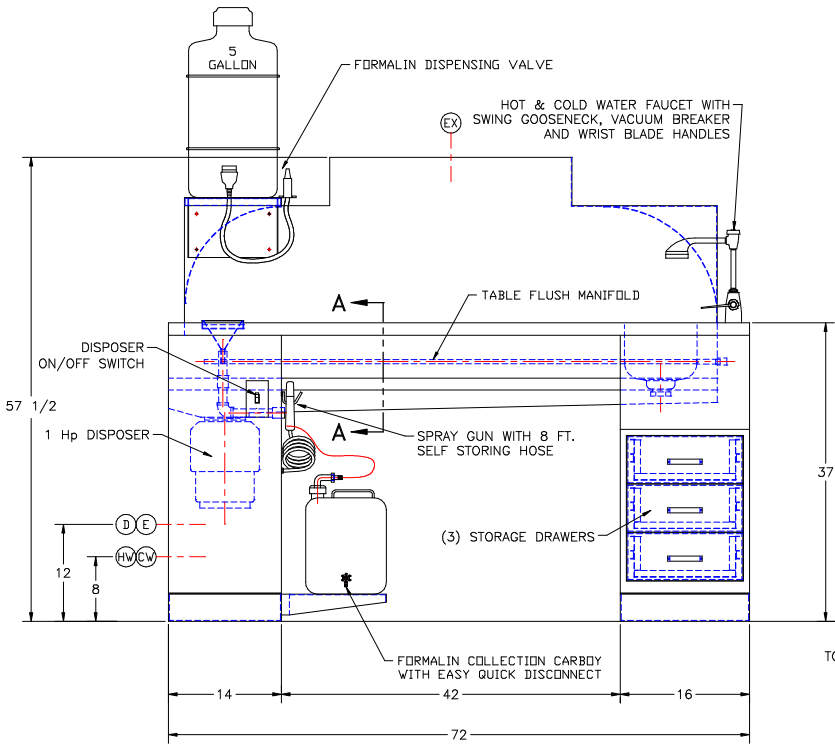
APPROVED

PRINT NAME:

DATE:

SIGNATURE:

- (INCLUDED OPTIONS) -
- HAND SPRAY GUN WITH RECOIL HOSE
  - CARBOY & FORMALIN DISPENSING SYSTEM
  - (1) 5" DIA CONED CUP SINKS
  - (3) SLIDING DRAWERS
  - 1 HP DISPOSER
  - PERIMETER PERFORATED REMOVABLE PANELS



				<b>TBJ INC</b>		1671 ORCHARD DRIVE CHAMBERSBURG, PA 17201	
				SCALE	NTS	DRAWN BY	ALE
						DATE	9-19-03
				MODEL 28-72-S DD			
				DOWNDRAFT TISSUE TRIM TABLE			
LET	REVISION		BY	DATE	ROUGH-IN ASSEMBLY		R03127