

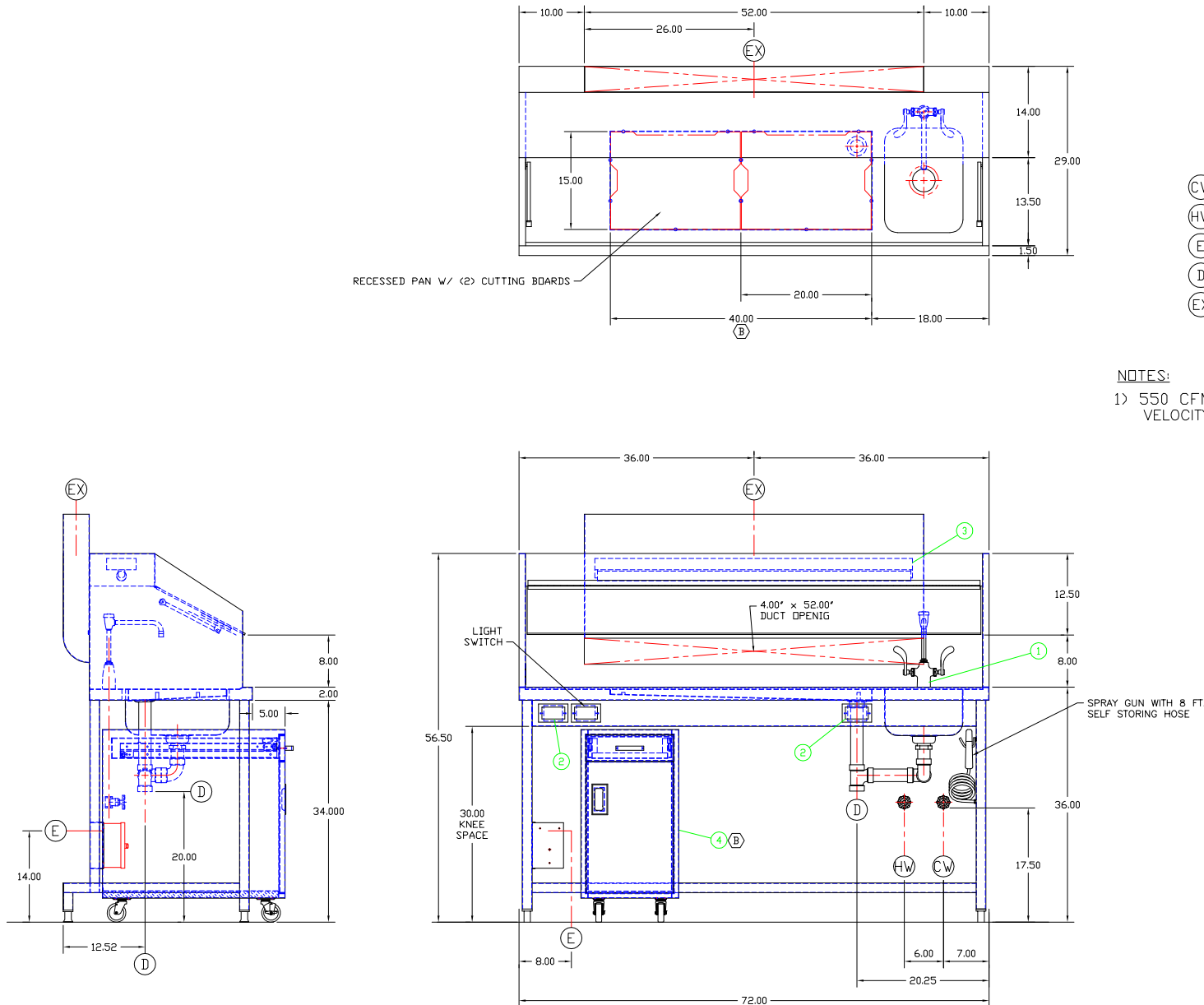
ITEM	QTY	TOT	DESCRIPTION
1	1		HOT & COLD WATER FAUCET, 4" GOOSENECK
2	2		DUPLEX OUTLET
3	1		FLUORESCANT LIGHT FIXTURE
4	1		TRANSFER CART - TBJ DWG# R07074

UTILITY REQUIREMENTS

- (CW) — COLD WATER - 1/2" I.P.S.
 (HW) — HOT WATER - 1/2" I.P.S.
 (E) — ELECTRICAL - 115V., 1 PH, 60 Hz., 15 AMPS
 (D) — DRAIN - 1 1/2" I.P.S.
 (EX) — EXHAUST - 4" X 52" CONNECTION

NOTES:

- 1) 550 CFM IS REQUIRED TO PROVIDE 100 FPM CAPTURE VELOCITY ACROSS WORK OPENING.



APPROVED

PRINT NAME:

DATE:

SIGNATURE:

This print is the property of TBJ Incorporated. The information contained herein is confidential, it is not transferable. It is furnished with the clear understanding that it is not to be traced, reproduced or used in any other process of manufacturing without written permission from the owner and is returnable upon request. Any infringement upon the patent rights shown herein, whether in whole or part, will be severely prosecuted.

B	INCREASED CUTTING BOARD AREA & SWITCHED CART	ALE	4-23-07
A	ADDED TRANSFER CART	ALE	4-17-07
LET	REVISION	BY	DATE
		1671 ORCHARD DRIVE CHAMBERSBURG, PA 17201	
SCALE 1-1/2"=1'-0"		DRAWN BY BSC	
REF DWG - R00118		DATE 3-27-07	
MODEL 25-72 BACKDRAFT STATION		R07051	