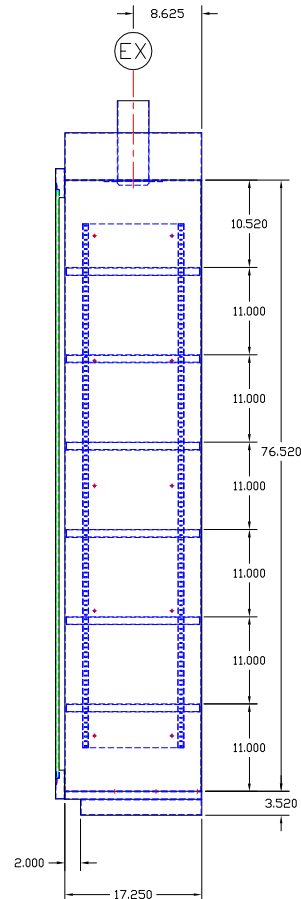
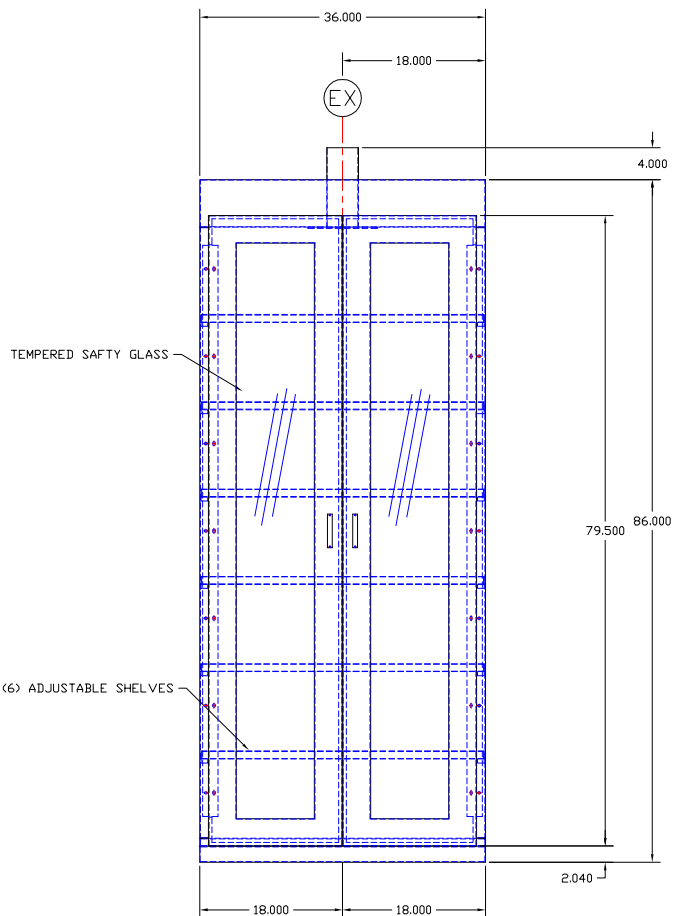


UTILITY REQUIREMENTS

⊙ EX — EXHAUST ————— 4" DIA. @ 60 CFM.



APPROVED

PRINT NAME:

DATE:

SIGNATURE:

This print is the property of TBJ Incorporated. The information contained herein is confidential, it is not transferable. It is furnished with the clear understanding that it is not to be traced, reproduced or used in any other process of manufacturing without written permission from the owner and is returnable upon request.

LET	REVISION	BY	DATE
TBJ INC 1671 ORCHARD DRIVE CHAMBERSBURG, PA 17201			
SCALE	NTS	1018-2	DRAWN BY ALE
REF DWG - R05162		DATE	1-18-06
18-36 VENTED STORAGE CABINET			
ROUGH-IN ASSY		R06012	