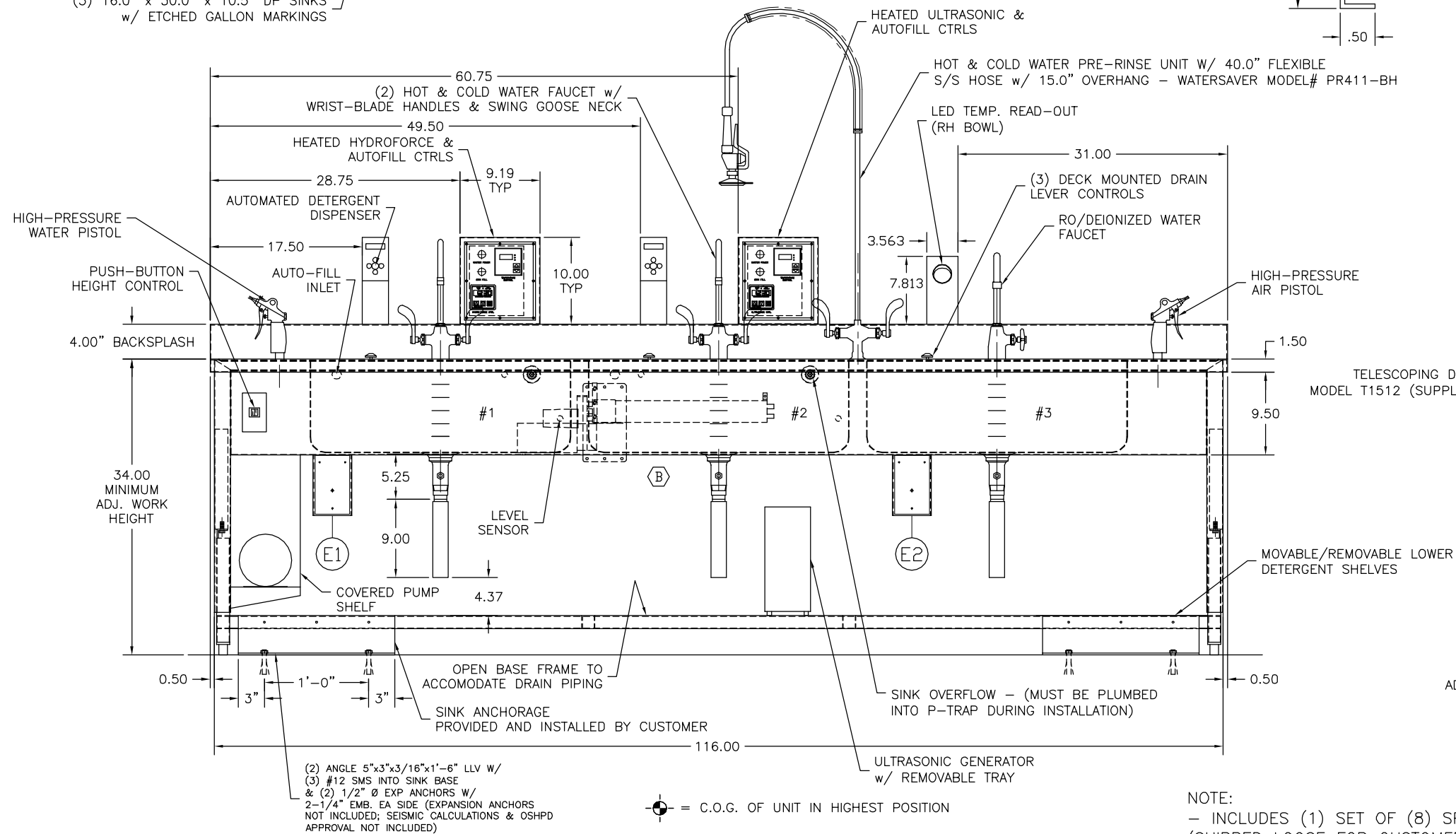


(3) 16.0" x 30.0" x 10.5" DP SINKS
w/ ETCHED GALLON MARKINGS



NOTES: 1) MAX. OVERALL DIMENSIONS MUST BE
CONSIDERED FOR BUILDING ENTRY.

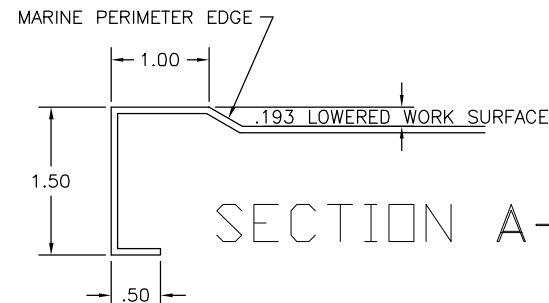
⊙ = C.O.G. OF UNIT IN HIGHEST POSITION

APPROX. FINISHED WEIGHT = 413.35 LBS
C.O.G. LOCATION: 15.45" FROM FRONT EDGE x
60.28" FROM RH SIDE x 26.88" FROM FLOOR

NOTE:
- INCLUDES (1) SET OF (8) SPRAY TIPS
(SHIPPED LOOSE FOR CUSTOMER PLACEMENT)

UTILITY REQUIREMENTS

- CW — COLD WATER - (1) @ 3/4" NPT (SPRAY), (3) @ 1/2" NPT (FLEX LINE BY OTHERS)
- HW — HOT WATER - (3) @ 1/2" NPT (FLEX LINE BY OTHERS)
- D — DRAIN - (3) @ 1-1/2" NPT
- E1 — ELECTRICAL - 115 V., 1 PH., 60 Hz., 30 AMP (HARDWIRED)
- E2 — ELECTRICAL - 120 V., 1 PH., 60 Hz., 30 AMP (HARDWIRED)
- CA — COMPRESSED AIR - (1) @ 3/4" NPT (FLEX)
- DI/RO — DEIONIZED WATER - 1/2" NPT (FLEX LINE BY OTHERS)

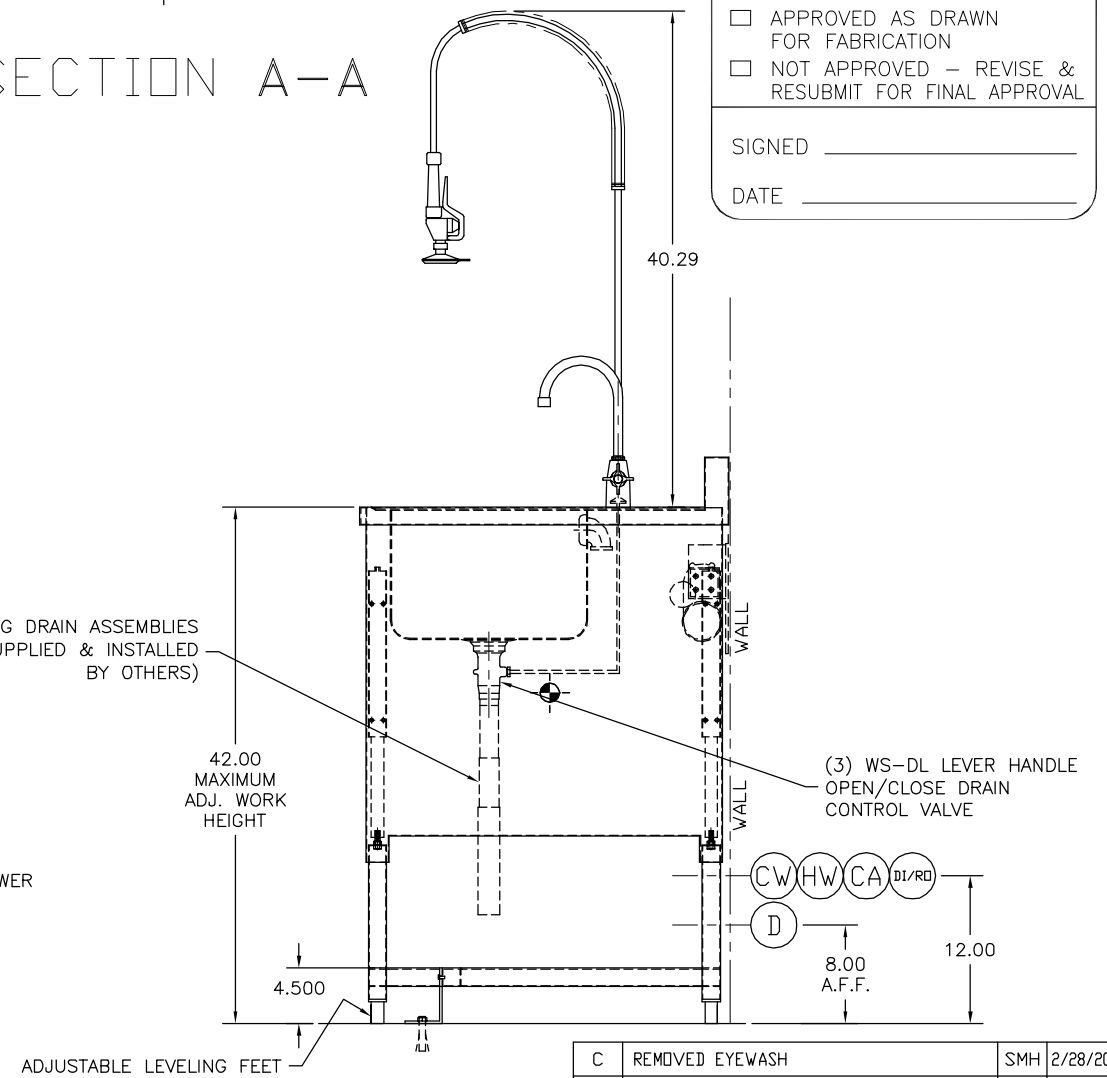


FOR APPROVAL ONLY

ONE (1) SET OF APPROVAL PRINTS
MUST BE SIGNED AND RETURNED TO
TBJ INC. BEFORE EQUIPMENT
CAN BE RELEASED FOR PRODUCTION

- ☐ APPROVED AS DRAWN
FOR FABRICATION
- ☐ NOT APPROVED - REVISE &
RESUBMIT FOR FINAL APPROVAL

SIGNED _____
DATE _____



KAISER FREEMONT

UNLESS OTHERWISE SPECIFIED
TOLERANCES IN INCHES:
FRACTIONAL ± 1/32
ANGULAR ± 0°25'
ONE DECIMAL ± 0.063
TWO DECIMAL ± 0.031
THREE DECIMAL ± 0.015

PROD. RELEASE	NAME	DATE
APPR. RELEASE	-	-
REVIEWED BY	-	-
ENG APPR.	-	-

C	REMOVED EYEWASH	SMH	2/28/20
B	REMOVED SURGISONIC SYSTEM	SMH	12/6/19
A	CUSTOMER REQUESTED CHANGES	SMH	11/20/19
LET	REVISION	BY	DATE
TBJ INCORPORATED			
1671 ORCHARD DRIVE CHAMBERSBURG, PA 17201 Phone: (717) 261-9700 www.tbjinc.com			
SCALE 1-1/2"=1'-0"	3377-1	DRAWN BY SMH	
REF DWG - R16220		DATE 11-8-19	
MODEL K30-117-3B WS-AH WORK SINK			
ROUGH-IN ASSEMBLY		R19326	