

TBJ Model 30-60-MB PPT Instrument Prep & Pack Workstation

Product Specification

Product Description

The TBJ Model 30-60-MB PPT Instrument Prep and Pack Workstation is designed for use in sterile processing departments for assembling instrument sets while also providing an organized work area. The workstation can be designed with a fixed height or ergonomic manual or electric push-button height adjustment. A full width white marker board is included along with a power strip and under shelf LED light fixture and a 3-compartment storage bin. All prep and pack stations are constructed of type 304 stainless steel.

Dimensions

The 30-60 PPT is 30 Wide x 60" Long. The height adjustment feature allows the work top to be adjustable between 32" and 40" High (other travel ranges are available).

Construction/Design

- Heavy duty stainless steel construction.
- Type 304 stainless steel counter top, 16 gauge, #4 finish.
- Counter top reinforced underneath for added strength
- Type 304 stainless steel tubular legs, 1 ½" square x 16 gauge wall.
- Seamless heliarc welded construction
- All exposed welds ground and polished.
- Adjustable leveling feet or OPTIONAL swivel casters.
- Fixed height at 36" or OPTIONAL height adjustment system.
- A wide variety of optional features are available to add to the base unit. See optional features listed below.

Installation and Assembly

TBJ workstations are shipped partially or fully assembled depending upon the configuration ordered. Some optional accessories disassembled for reassembly on site.



MODEL 30-60-MB PPT WITH ADJUSTABLE HEIGHT, REAR MOUNTED MARKER BOARD, FLAT SCREEN MONITOR HOLDER, POWER STRIP, OVER HEAD LED LIGHTING. PULL OUT STORAGE DRAWER, STORAGE BIN AND ADJUSTABLE LEVELING FEET

OPTIONAL FEATURES



Integral Storage
Drawers



Overhead Light
Assembly



3.5 Diopter
Magnifier Light



15 Amp Plug Strip



Hook Rail Attachment



Ergonomic Access
"cut-out"



Surface Mounted
Flat Screen Arm



Surface Mounted Flat Screen
Arm with Keyboard Arm



Full Width Shelving



CPU Holder



Roll Cutter



Roll Holder



Stainless Steel Wire
Storage Baskets



Stainless Steel Shelf



Plastic Bins



Electric Push-Button
Height Adjustment



Manual Height Adjustment



Stainless Steel Pegboard

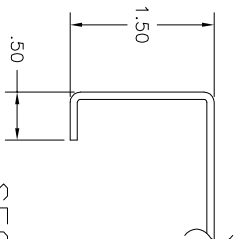


Linen Holder

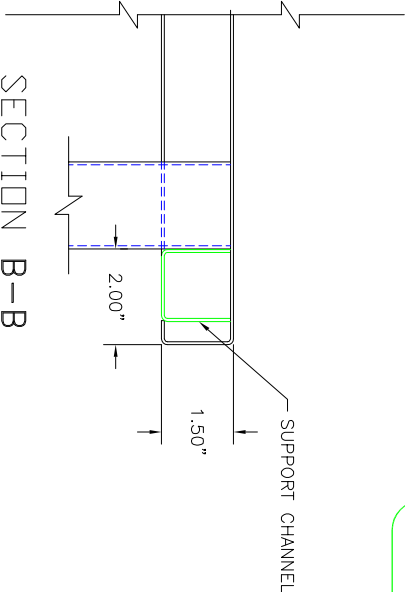
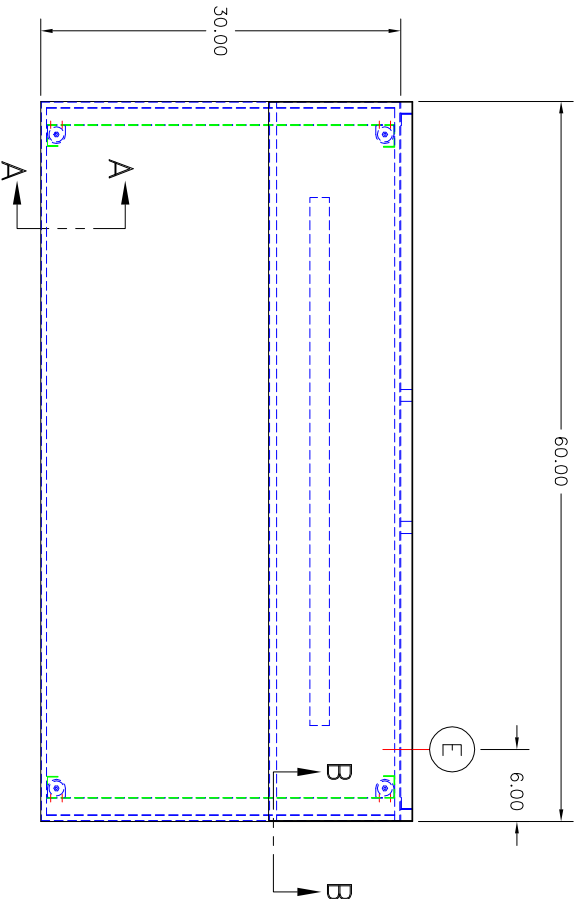
Contact TBJ for a detailed rough-in drawing that is specific to the sink design you are interested in.
TBJ, Inc. | 1671 Orchard Drive, Chambersburg, PA 17201 | Phone 717-261-9700 | Fax 717-261-17

UTILITY REQUIREMENTS

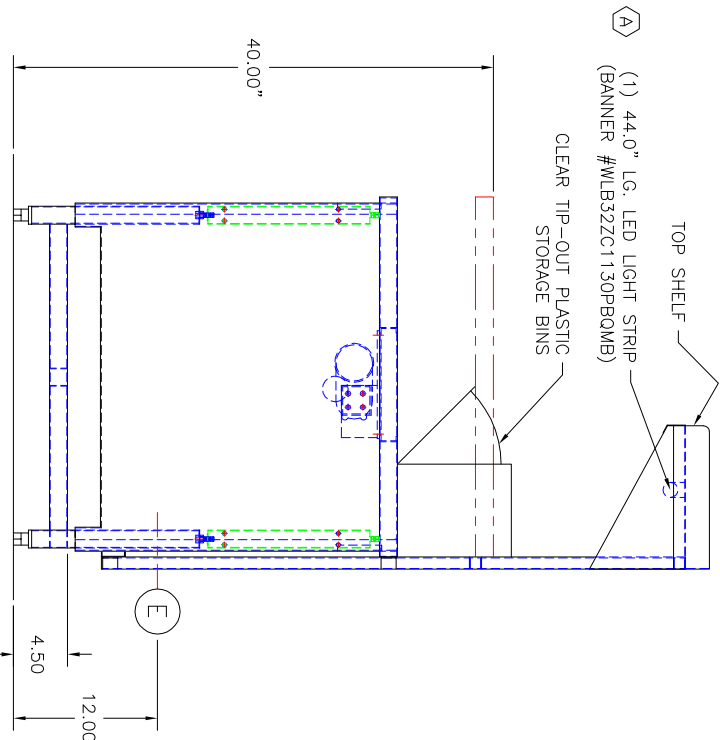
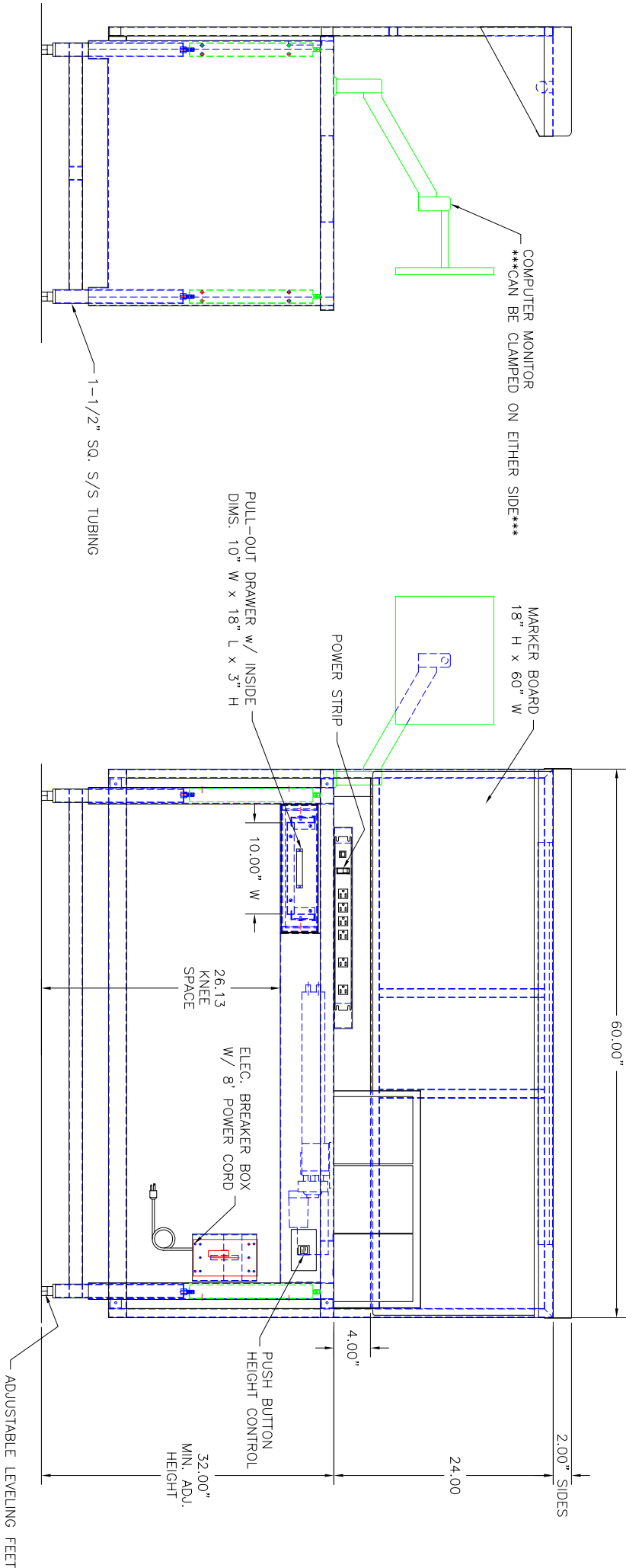
ⓔ—ELECTRICAL - 115 V., 1 PH., 60 HZ., 15 AMP
(FOR 3-PRONG GROUNDED PLUG)



SECTION A-A
SCALE: FULL



SECTION B-B
SCALE: 6"=1'-0"



FOR APPROVAL ONLY

ONE (1) SET OF APPROVAL PRINTS MUST BE SIGNED AND RETURNED TO TBJ INC. BEFORE EQUIPMENT CAN BE RELEASED FOR PRODUCTION

☐ APPROVED AS DRAWN
☐ FOR FABRICATION
☐ NOT APPROVED - REVISE & RESUBMIT FOR FINAL APPROVAL

SIGNED _____
DATE _____

UNLESS OTHERWISE SPECIFIED							
TOLERANCES IN INCHES:		FRACTIONAL ± 1/32		ANGULAR ± .025°		ONE DECIMAL ± 0.063	
				TWO DECIMAL ± 0.031		THREE DECIMAL ± 0.015	
PROJ. RELEASE	-	DATE	-	NAME	DATE	REF. DWG - R14152	DRAWN BY - ALE
APPR. RELEASE	-	DATE	-	NAME	DATE	REF. DWG - R14152	DRAWN BY - ALE
REVIEWED BY	-	DATE	-	NAME	DATE	REF. DWG - R14152	DRAWN BY - ALE
ENG. APPR.	-	DATE	-	NAME	DATE	REF. DWG - R14152	DRAWN BY - ALE
1671 ORCHARD DRIVE CHAMBERSBURG, PA 17201 INCORPORATED Phone: (717) 261-9700 www.tbjinc.com				30-60 WT-AH WORK TABLE			
RDUGH-IN ASSEMBLY				R15172			