

# **TBJ Model 30-50-2B-AH SPCS Scope Pre-Cleaning Sink (ref. dwg. R18066, R18304 and R19327)**

## **Product Specification**

### **Product Description**

The TBJ Model 30-50-2B-AH SPCS work sink is specifically designed for use in GI Labs and Sterile Processing Departments for the pre-cleaning of flexible endoscopes. The unit includes two sink bowls thus meeting AAMI guidelines for having a minimum of two separate sink basins.....one for manual cleaning and leak testing and one for rinsing of scopes. An integrated Scope Buddy™ Plus Endoscope Flushing Aid with wire management to reduce clutter at the sink is included. The work sink shall have the following configuration and features:

- Two 22" x 19" x 10 ½" deep sink bowls
- (1) deck-mounted hot/cold faucet with wrist blade handles shall be located between sinks bowls.
- Our unique OPTIONAL Auto Fill System is included on the wash sink bowl that allows for automatic, push-button filling of the sink so that users can walk away and multi-task while the sink fills with water..
- The ergonomic, electrically operated hydraulic lift system allows the sink height to be adjusted from 32" to 40" high via a rocker switch control.
- An integrated Scope Buddy™ Plus Endoscope Flushing Aid is included
- Two level handle drain controls for remote sink draining
- Stainless steel back panel with bin and basket hanging system.
- Overhead canopy with shelf and LED lighting
- Full length, 26" wide undershelf below sink top for storage

### **Construction/Design**

- Heavy duty stainless steel construction
- Type 304 stainless steel sink top, 14 gauge, #4 finish
- Type 304 stainless steel tubular base frame made of 1 ½" square x 16 gauge wall tubing
- Adjustable leveling feet
- Seamless heliarc welded construction
- All exposed welds ground and polished
- 4" high backsplash extending the length of the sink top
- NSF approved 14 gauge sink bowls with cove corners
- 1/8" high marine edge on around front and sides
- Hospital grade, chrome plated brass faucets and fixtures
- Lever handle drain controls
- Sink bowl sizes and overall dimensions can be customized around your specific needs.
- A wide variety of optional features are available to add to the base unit. See partial list of optional features listed below.



### **Dimensions:**

The 30-50-2B-AH is 30" Wide x 50" long. The ergonomic height adjustment feature allows the sink top to be adjustable between 32" and 40" High. The sink bowls are a spacious 22" Wide x 19" Long x 10 ½" deep and include lever handle drain controls.

### **Sink Fixtures**

**Hot/Cold water faucets** – (1) chrome plated, deck mounted hot/cold water faucet with wrist blade handles. Fixtures are pre-piped to threaded valves for ease of connection to building utilities on site.

**Scope Buddy™ Plus Endoscope Flushing Aid** – Designed to facilitate the flushing of rinse water, air and detergent solutions through the channels of flexible, immersible endoscopes during the manual cleaning process of endoscope reprocessing prior to the subsequent high-level disinfection or sterilization process.

**Automatic Sink Bowl Filling System** – The auto-fill system includes an ON/OFF switch, timer to pre-set fill duration, a level control sensor and push-button fill control. The system will automatically fill the same volume of water cycle after cycle.

**Enzymatic Dosing System** – The enzymatic dosing system enables you to pre-program (2) different dosing levels. It includes water temperature monitoring, soak timer and "Check Detergent Supply" alarm when detergent supply is empty..

### **ELECTRICAL**

The sink unit is completely pre-wired to an integral breaker box with a 6-foot hospital grade plug.

### **Installation and Assembly**

TBJ work sinks are shipped fully assembled, for quick and easy setup. Standard and optional fixtures are shipped installed and ready for use after installation of the sink. Fixtures are pre-piped ready for connection to in-house utilities on site.

## WORK SINK OPTIONS



Push-Button  
Height Adjustment



Selecta Air &  
Water Pistols



Etched Gallon  
Markings



Integrated Scope Buddy™  
Plus Flushing Aid



Hot/Cold spray rinse  
Faucet combination



Custom Sink Bowl Sizes



Built-in Cabinets  
and Drawers



Custom back-splashes and  
Side-splashes

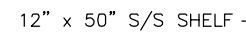
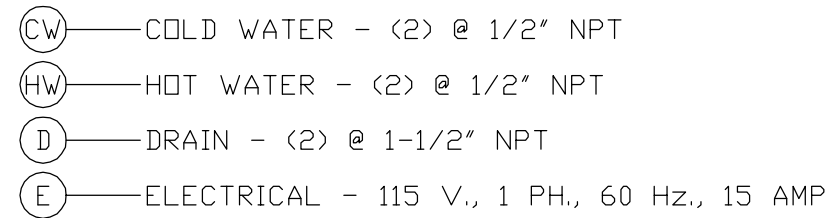
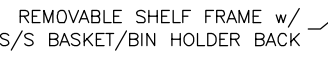
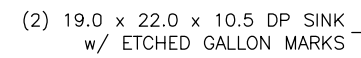


Full width under shelf



DI and RO water

**ADDITIONAL OPTIONS NOT SHOWN:** Automatic push-button sink filling, Overhead canopy with LED lighting and storage bins, LED task lighting, Water temperature monitoring, Programmable enzymatic dosing, Integrated leak testing.




ONE (1) SET OF APPROVAL PRINTS  
MUST BE SIGNED AND RETURNED TO  
TBJ INC. BEFORE EQUIPMENT  
CAN BE RELEASED FOR PRODUCTION

☐ APPROVED AS DRAWN  
FOR FABRICATION

☐ NOT APPROVED — REVISE &  
RESUBMIT FOR FINAL APPROVAL

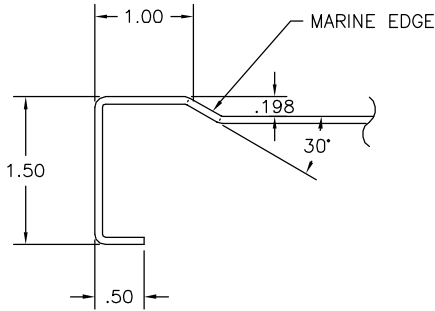
SIGNED \_\_\_\_\_

( DATE \_\_\_\_\_ )

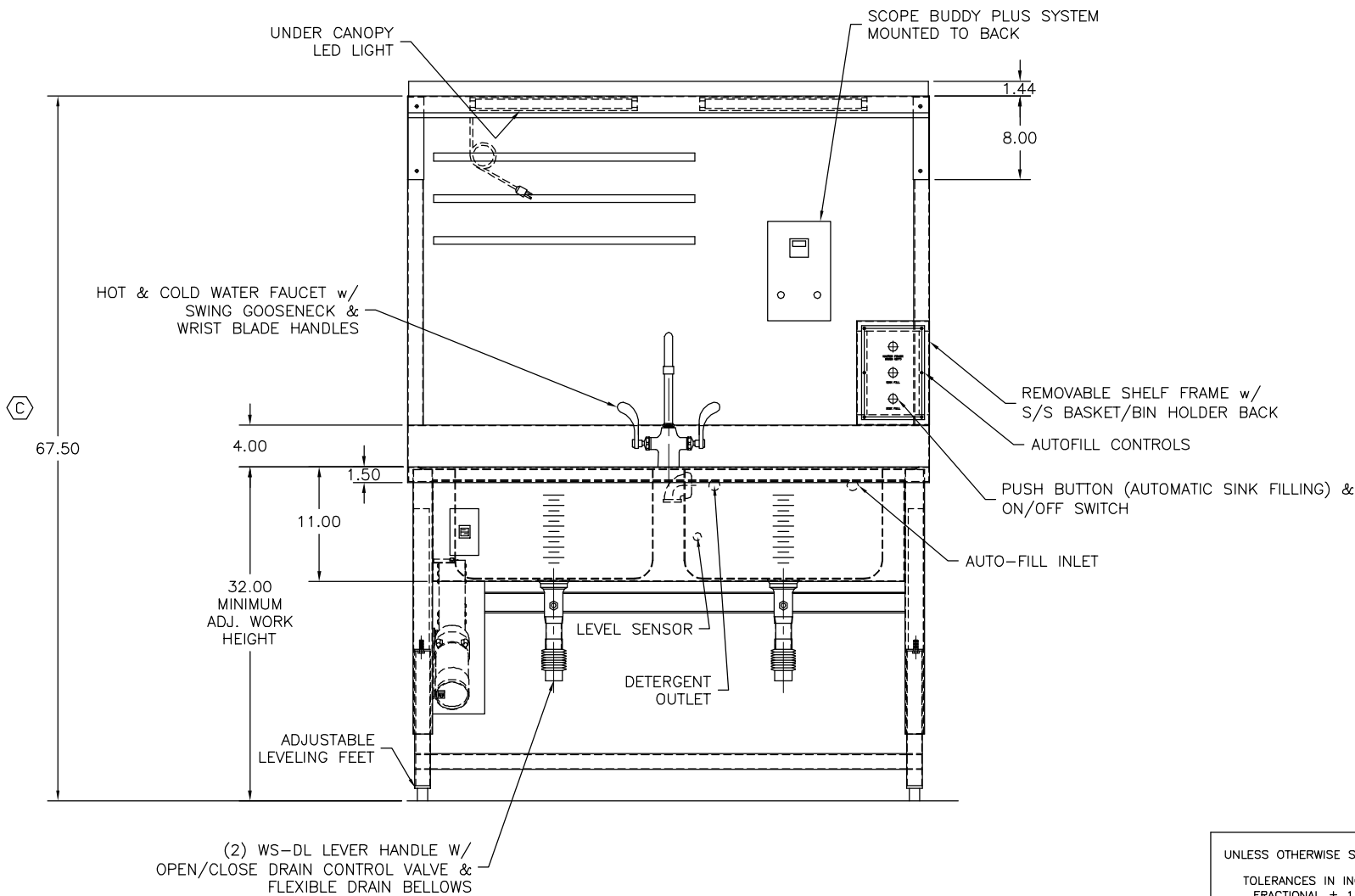
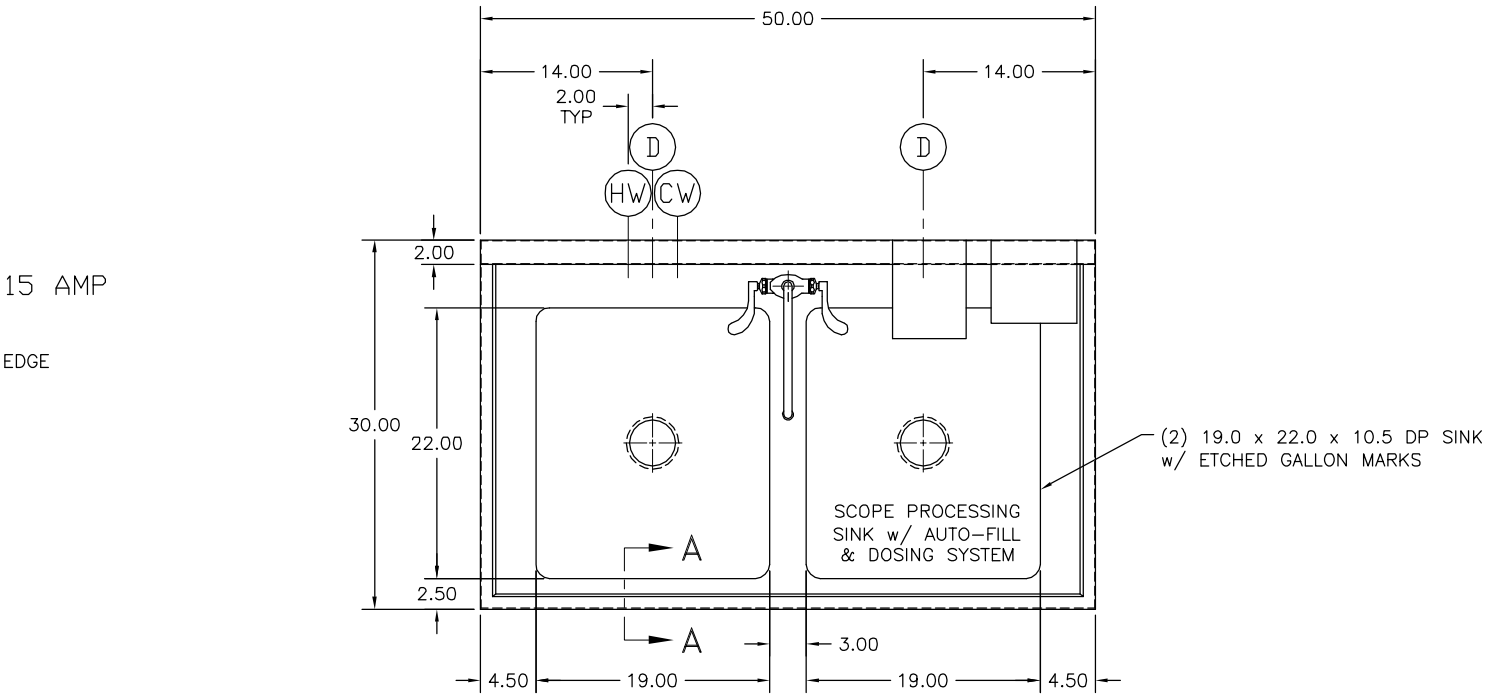
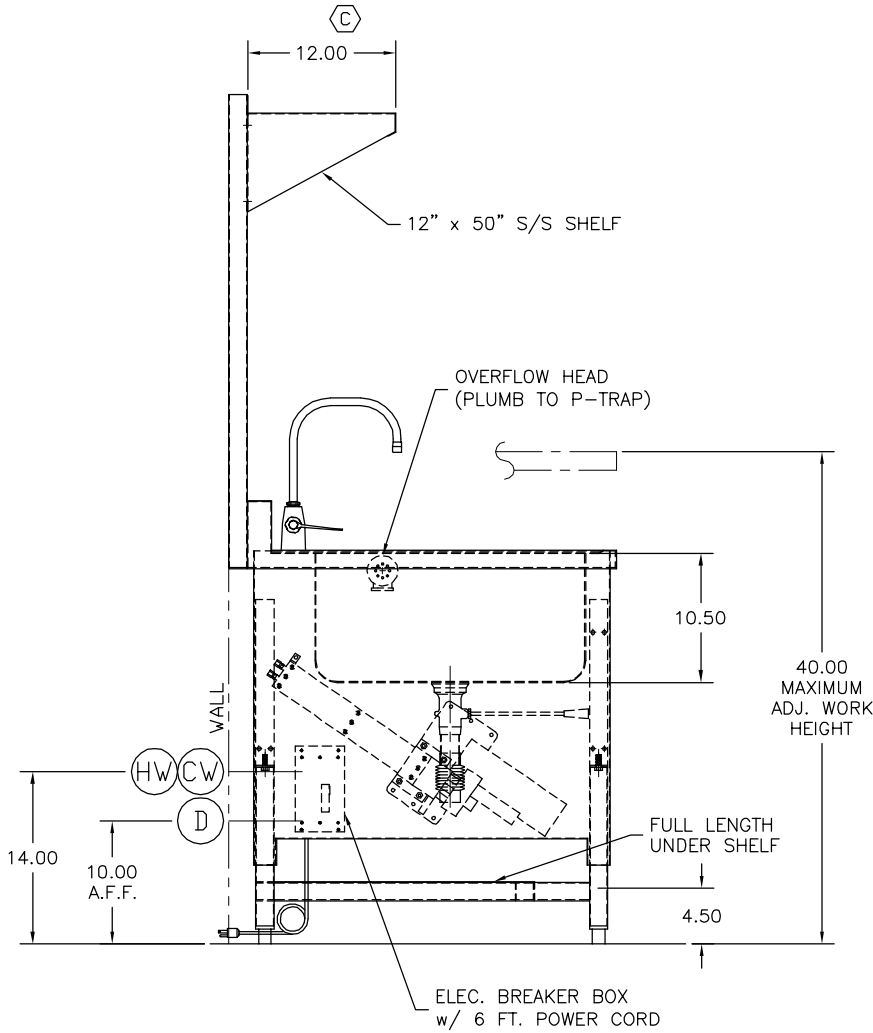
B	UPDATED SHELF SIZE & HT	SMH	1/23/19
A	UPDATED PER AS BUILT	SMH	1/15/19
LET	REVISION	BY	DATE
		1671 ORCHARD DRIVE CHAMBERSBURG, PA 17201 Phone: (717) 261-9700 <a href="http://www.tbjinc.com">www.tbjinc.com</a>	
SCALE	NTS	3085-3A	DRAWN BY SMH
REF	DWG - R18066	DATE	10-12-18
30-50-2B SPPS SCOPE PROCESSING SINK			
ROUGH-IN ASSEMBLY		R18304	

UTILITY REQUIREMENTS

- CW—COLD WATER - (1) @ 1/2" NPT  
HW—HOT WATER - (1) @ 1/2" NPT  
D—DRAIN - (2) @ 1-1/2" NPT  
E—ELECTRICAL - 115 V., 1 PH., 60 Hz., 15 AMP



SECTION A-A



FOR APPROVAL ONLY

ONE (1) SET OF APPROVAL PRINTS  
MUST BE SIGNED AND RETURNED TO  
TBJ INC. BEFORE EQUIPMENT  
CAN BE RELEASED FOR PRODUCTION

- ☐ APPROVED AS DRAWN  
FOR FABRICATION  
☐ NOT APPROVED - REVISE &  
RESUBMIT FOR FINAL APPROVAL

SIGNED \_\_\_\_\_

DATE \_\_\_\_\_

UNLESS OTHERWISE SPECIFIED  
TOLERANCES IN INCHES:  
FRACTIONAL ± 1/32  
ANGULAR ± 0°25'  
ONE DECIMAL ± 0.063  
TWO DECIMAL ± 0.031  
THREE DECIMAL ± 0.015

	NAME	DATE
PRD. RELEASE	-	-
APPR. RELEASE	-	-
REVIEWED BY		
ENG APPR.		

C	UPDATED SHELF SIZE & HT	SMH	1/23/19
B	UPDATED PER AS BUILT	SMH	1/14/19
A	UPDATED DESIGN PER CUSTOMER REQUEST	SMH	7/10/18
LET	REVISION	BY	DATE
<b>TBJ</b> INCORPORATED 1671 ORCHARD DRIVE CHAMBERSBURG, PA 17201 Phone: (717) 261-9700 www.tbjinc.com			
SCALE	NTS	3085-3	DRAWN BY SMH
REF DWG - R17311		DATE	3-9-18
30-50-2B SPPS SCOPE PROCESSING SINK			
ROUGH-IN ASSEMBLY		R18066	