

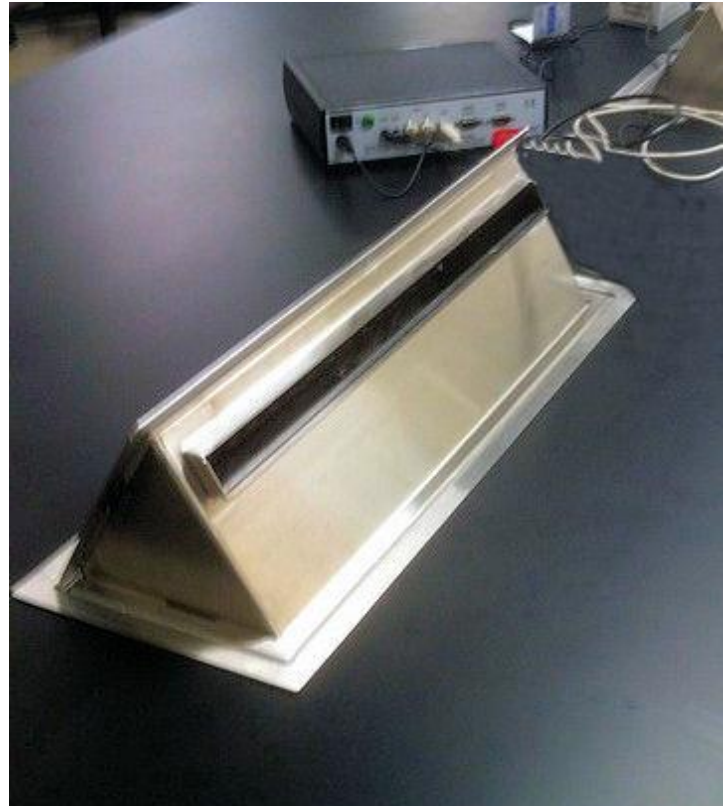
TBJ Model 20-7-PSE Pop-Up Slot Exhaust



Product Specification

Product Description

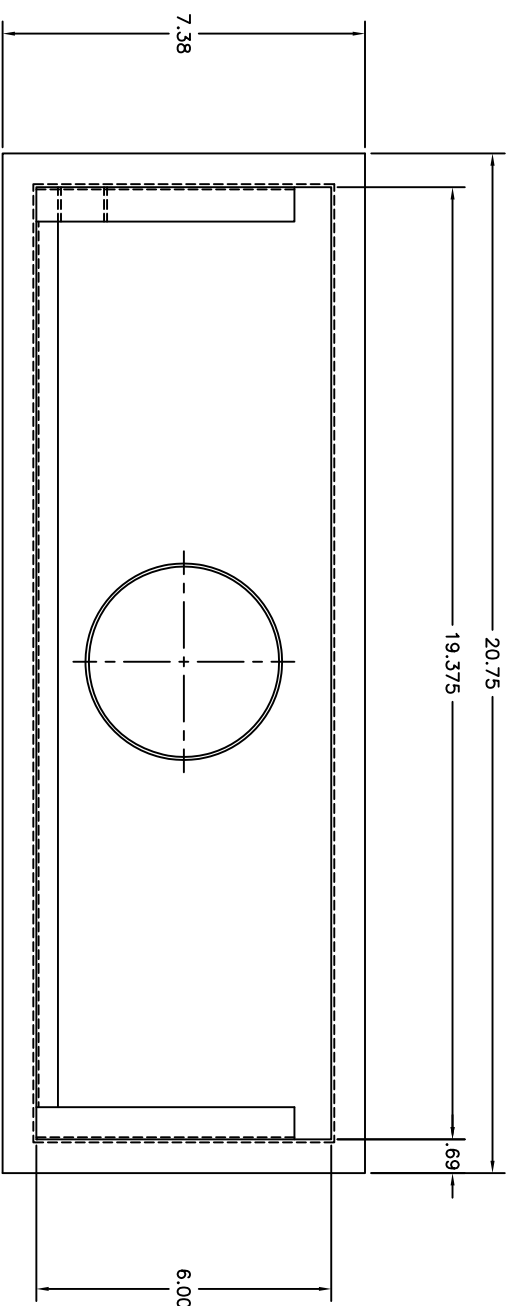
The TBJ Model 20-7 PSE Drop-In Pop-Up Slot Exhaust is designed to provide a compact, unobtrusive point of use ventilation source that shall function to pull air, odors, vapors and aerosols back and away from the face of personnel when connected to a negative air source. Chemicals such as formalin, alcohol and xylene are controlled and can be kept below OSHA permissible exposure limits thus providing a healthier, safer work environment. The unit is designed to drop into existing tables or counter tops or it can be supplied as an integrally welded unit in a stainless steel table with a variety of optional features. In the closed position the top of the unit sets flush with the table top. The unit is spring loaded and quickly and easily opens to provide slot ventilation for users working on various types of procedures.



The Model 20-7 PSE Mounted in an epoxy resin counter top

Features:

- Heavy duty stainless steel construction
- Type 304 stainless steel with 16 gauge, #4 finish
- .69" flange around perimeter for drop-in mounting through an existing cut out.
- Spring loaded pop-up slot
- 1" wide x 18" long exhaust slot
- 4" outside diameter duct connection
- Overall dimensions: 7.35" x 20.75" x 5.50" deep and 10.57" high in open position

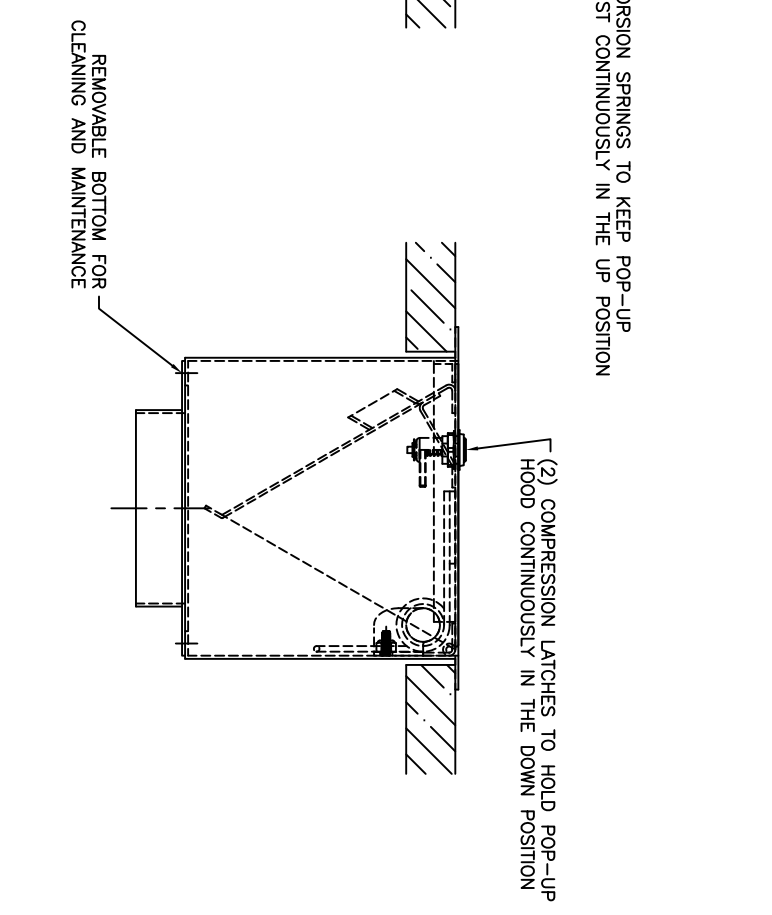
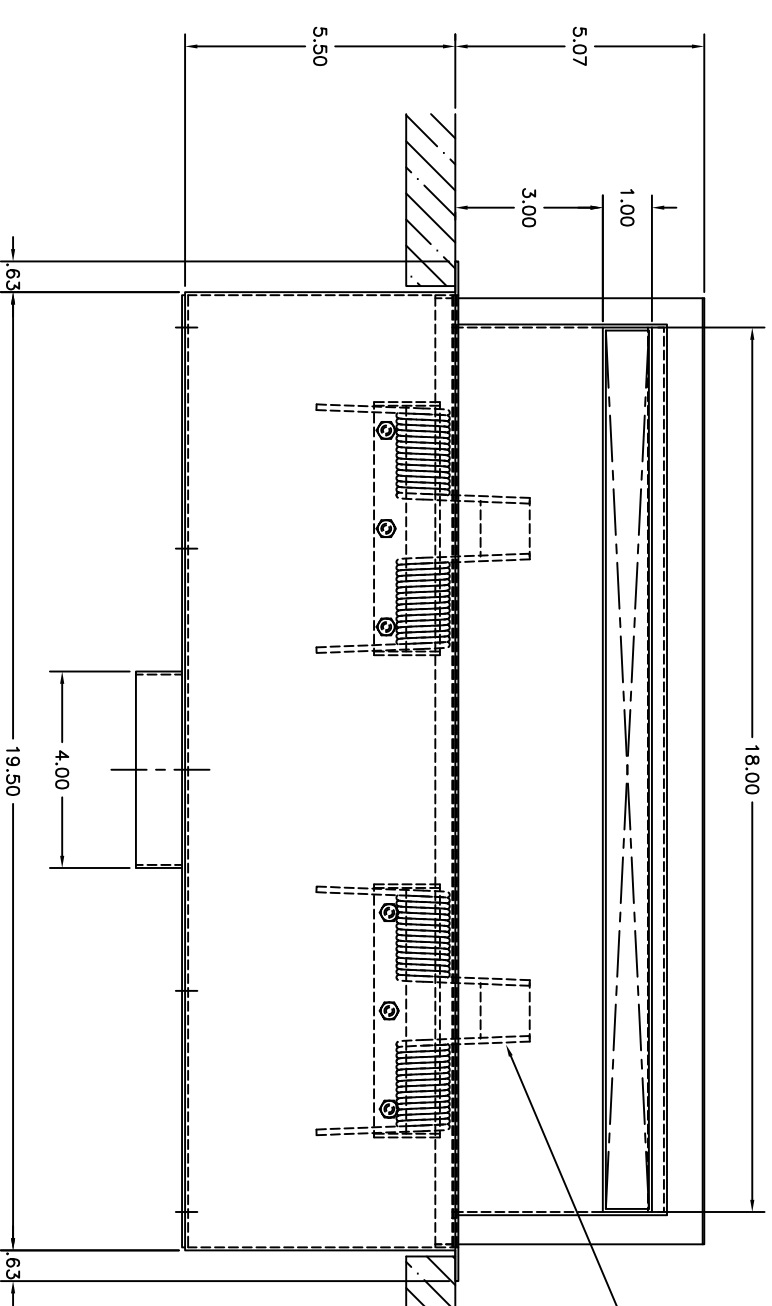
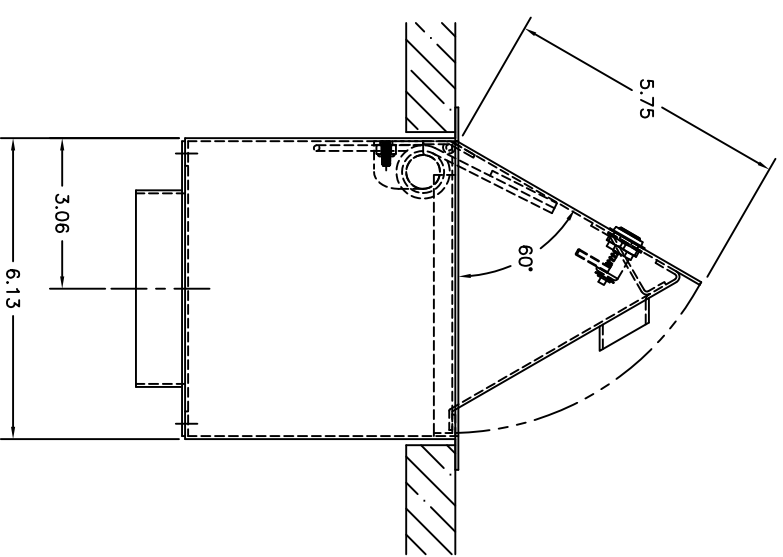


FOR APPROVAL ONLY

ONE (1) SET OF APPROVAL PRINTS MUST BE SIGNED AND RETURNED TO TBU INC. BEFORE EQUIPMENT CAN BE RELEASED FOR PRODUCTION

APPROVED AS DRAWN
 FOR FABRICATION
 NOT APPROVED - REVISE & RESUBMIT FOR FINAL APPROVAL

SIGNED _____
 DATE _____



UTILITY REQUIREMENTS

EX — 4.0" O.D. CONNECTION = (12.6 SQ. IN. = .0875 SQ. FT.)
 EXHAUST CAPTURE SLOT = 1.0" x 18.0" = (.125 SQ. FT.)
 25 CFM = 200 FPM SLOT VELOCITY
 25 CFM = 286 FPM DUCT VELOCITY

UNLESS OTHERWISE SPECIFIED			
TOLERANCES IN INCHES:			
FRACTIONAL ± 1/32			
ANGULAR ± .075°			
ONE DECIMAL ± 0.063			
TWO DECIMAL ± 0.031			
THREE DECIMAL ± 0.015			
PROD. RELEASE	NAME	DATE	
APPR. RELEASE			
REVIEWED BY	NE.S	11-25-14	
ENG APPR.			
LET	REVISION	BY	DATE
		1671 ORCHARD DRIVE CHAMBERSBURG, PA 17201 INCORPORATED Phone: (717) 261-9700 www.tbujnc.com	
SCALE	6'-1'-0"	DRAWN BY	ALE
REF DWG	R14025	DATE	11-25-14
POP-UP SLOT EXHAUST			
ROUGH-IN ASSEMBLY		R14187	